

TWO NEW GAMMARIDEAN AMPHIPODS (CRUSTACEA) COLLECTED
BY THE SECOND CRUISE OF THE JAPANESE EXPEDITION
OF DEEP SEA (JEDS-2)*

KIZŌ NAGATA

Inland Sea Regional Fisheries Research Laboratory

With 2 Text-figures

While examining gammaridean amphipods collected by "Ryōfū-maru" in the area ranging 37°55' N. to 42°26' N. in Latitude, 143°25' E. to 148°28' E. in Longitude of Japan Trench during September of 1959, the writer has identified the following eighteen species in total of all six collections by several gears, two of which belong to the Leucothoid and Paramphithoid groups seemed to be new to science. They are:

Lysianassidae

Cyphocaris challengerii STEBBING

Cyphocaris richardi CHEVREUX

Cyclocaris guillemi CHEVREUX

Koroga megalops HOLMES

Aristias falcatus STEPHENSEN

Anonyx eous GURJANOVA

Paracallisoma alberti CHEVREUX

Bathycallisoma schellenbergi (B. & V.)

Stegocephalidae

Parandania boeckii (STEBBING)

Ampeliscidae

Ampelisca macrocephala LILJEBORG

Ampelisca plumosa HOLMES

Ampelisca furcigera BULYCHEVA

Ampelisca eoa GURJANOVA

Phoxocephalidae

Paraphoxus oculatus (SARS)

Harpinia kobjakobae BULYCHEVA

* JEDS Contribution No. 45.

Leucothoidae

Leucothoe pacifica, sp. nov.

Paramphithoidae

Epimeria pelagica BIRSTEIN & VINOGRADOV*Epimeria subcarinata*, sp. nov.

Recently, the oceanographic investigations of north-western part of the Pacific Ocean have been carried out extensively by the Russian ship "Vityaz". A large number of bathypelagic gammaridean amphipods from the same area have been reported by BIRSTEIN & VINOGRADOV (1955, 1958), from which many are now available for examining the present gammaridean composition. Now, only two new species are herein described. A general account of the Amphipoda collected will be described in detail, including the Hydrobiidae group (in charge of Dr. Haruhiko IRIE) in near future.

The writer wishes to acknowledge the opportunity given by the Executive Section of the Committee of the JEDS for assigning the examination of the Gammaridean group to the writer through the courtesy of Prof. Dr. IRIE of Nagasaki University who takes the charge of Order Amphipoda as a whole and for reading this manuscript. The writer is also deeply grateful to Prof. Dr. Huzio UTINOMI of the Seto Marine Biological Laboratory of Nagasaki University, for his constant aid and helpful advices in the study on this group and for giving an opportunity of publishing this paper. The writer is also indebted to Mr. Yoshimasa ENOMOTO of the Tokai Regional Fisheries Research Laboratory, for his help in translating the Russian references into Japanese.

Leucothoe pacifica, sp. nov.

(Fig. 1)

Diagnosis: Comparing with SARS' figures for *L. spinicarpa* (1895, fig. 101, fig. 1), the differences are as follows: Eyes could not be seen. Lobes of head somewhat angular. A thin interantennal plate vertically through the median line of the front of head and separating right and left antennae, forms a large triangular tooth below, its acute apex extending forwards nearly to the end of peduncular third article of antenna. Asymmetrical lobe of upper lip in frontal view rather similar to that of *L. uschakovi* figured by GURJANOVA (1951, fig. 320). Epistome not so long and so acute at apex, but never rounded as seen in *L. uschakovi*. Gnathopod 1: posterior margin of article 2 setose; the apices of articles 5 and 6 so delicately curved; article 7 relatively short, about one third as long as article 6. Gnathopod 2, posterior margin of articles 2 and 3 covered with setae; article 6 rather more elongated. Coxae 1-4 somewhat narrow and particularly in coxa 4 of which the frontal margin slightly concave, and it

angle bearing a small, acute point, whereas article 2 of peraeopods 3-5 more broader; the lower hind margin in peraeopod 5 rather truncated. The third pleonal epimeron distinctly sinuate at the lower posterior corner. Otherwise, the new species nearly agrees with *L. spinicarpa* figured by Sars.

Material: St. B, off Kushiro, Hokkaido, 42°40' N. Lat., 144°30' E. Long., 490 m, Niino dredge, Sept. 17, 1959, one female specimen, 13 mm long (Holotype, Cat. No. 3084, preserved in writer's hand).

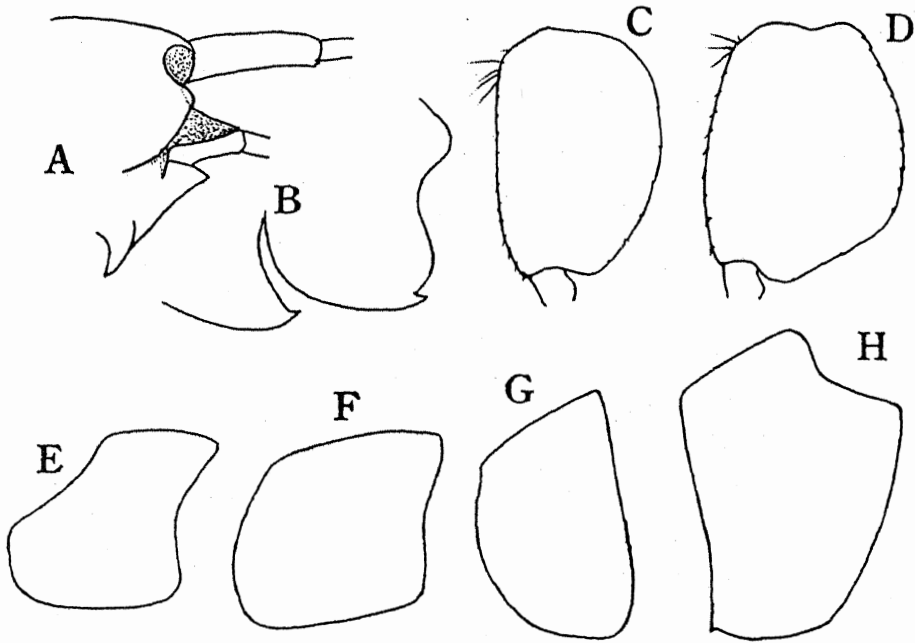


Fig. 1. *Leucothoe pacifica* sp. nov.

Female, 13 mm: A, front of head; B, epimeral plates 2 and 3; C and D, article 2 of peraeopods 3 and 5; E-H, coxal plates 1-4.

Remarks: The new species is closely related to *L. spinicarpa*, but lacks eyes in spite of being secured from such a relatively shallower depth of 490 meter. Two species of blind or nearly blind are hitherto known; *L. uschakovi* GURJANOVA (l. c.) from Greenland Sea, 3000 meter, and *L. panpulco* J. L. BARNARD (1961, p. 75, fig. 44) from depth of 3570 meter, off the Pacific coast of Panama, but this is distinguished from the former by antennae, coxa 1, gnathopod 1, epimeral plate 3, and epistome; and from the latter by the entire wanting of eyes, the shape of coxae 1-4, of article 2 of peraeopods 3-5, and of the infero-posterior angle of the third pleonal epimeron.

Epimeria subcarinata, sp. nov.

(Fig. 2)

Diagnosis: Rostrum not attaining to the end of the peduncular article of the first antenna. Peraeon segments lacking dorsal carina. Posterior corners of pleon segments 1 and 2 weak, not ending in a tooth, while each of segments 3 and 4 produced to an acute process. Dorsal depression on segment 4 wide and shallow. Eyes could be only faintly traced in spirit. Telson 4 anteriorly recurved, attenuated; posteriorly bearing a somewhat long

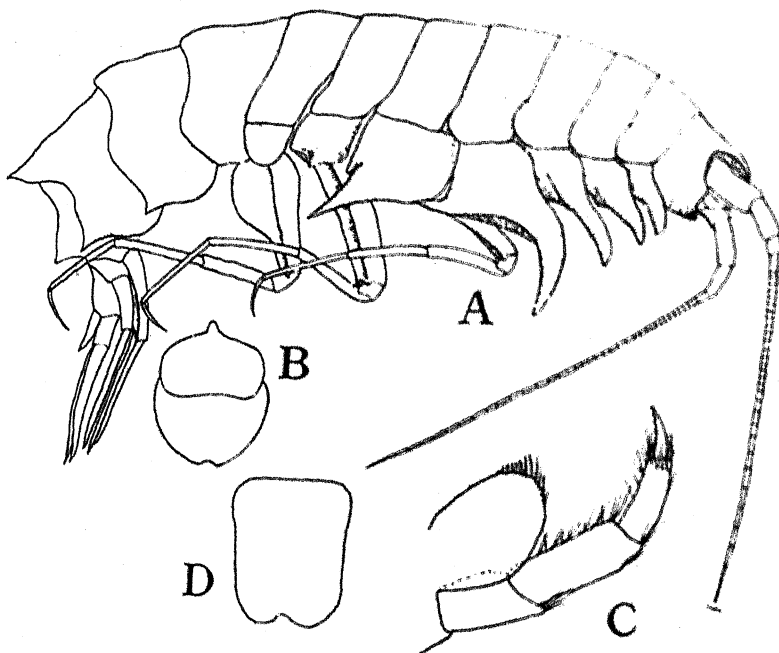


Fig. 2. *Epimeria subcarinata* sp. nov.

Female 23 mm, Holotype: A, lateral view. Female, 25.3 mm: B, upper lip; C, maxillipedal palp; D, telson.

blunt process. Coxa 5 acutely produced at the lower posterior corner. Pleon epimera 1 and 2 with the hind margin largely bulging, but slightly convex; the third pleonal epimeron; pleon epimera 2 and 3 with a tooth at the posterior corner, and bulging on the lower margin. Maxillipedal palp strong, its second article relatively long. Epistome with a small conical process at the distal end. Gnathopods like in *E. pacifica* GURJANOVA (1955: 191-figs. 12-13). Peraeopods long and slender; peraeopods 3 and 4 with a straight posterior margin on article 2; article 2 of peraeopod 5 dilate at base, t

abruptly narrowing to the distal end. Telson not narrowing towards the apex.

Material: St. S, off Onagawa near Sendai, 37°55' N. Lat., 143°25' E. Long., 2230 m, beam trawl, Sept. 11, 1959. Total: 3 female specimens; Holotype, 23 mm long (Cat. No. 3372, preserved in writer's hand); two other ones, 21 mm, and 25.3 mm in length.

Remarks: This is much closely related to *E. pacifica* (l. c.), but differs by the following characters; in *E. pacifica*, rostrum much elongated and reaching nearly to the distal end of peduncular third article of antenna 1; each of pleon segments 1-4 with a well developed dorsal projection; dorsal notch on pleon segment 4 narrow and steep; posterior process of coxa 5 nearly reaching to the posterior margin of the first pleonal epimeron; telson similar to the present new species, but narrowing distally; and showing a somewhat different shape of pleonal epimera 1-3.

The writer is, however, uncertain whether this new species is essentially distinctive from *E. pacifica* or not, in spite of the differences mentioned above. *E. pacifica* is based on the adult female of 21 mm long secured from the slope of the Trench in depths of 1450-1530 meters, E. of Shikotan I., while the present specimens of all adult female, 21.0-25.3 mm long were taken from the depth of 2230 meter, off Onagawa. Both species were therefore collected from the pretty neighboring localities each other, but the differences would not be due to ones such as both age and sex.

REFERENCES

- BARNARD, J. L. 1961. Gammaridean Amphipoda from depths of 400 to 6000 meters. *Galathea Repts.*, 5: 23-128, 83 figs.
- BIRSTEIN, A. and M. E. VINOGRADOV 1955. Pelagicheskie gammaridy (Amphipoda, Gammaridea) Kurilo-Kamchatskoie vpadiny. *Trudy Inst. Okean. Akad. Nauk SSSR*, 12: 210-287, 35 figs., 4 tables.
- 1958. Pelagicheskie gammaridy (Amphipoda, Gammaridea) severozapadnoi chasti Tixogo Okeana. *Ibid.*, 27: 219-257, 17 figs., 1 table.
- 1960. Pelagicheskie gammaridy tropicheskoi chasti Tixogo Okeana. *Ibid.*, 34: 165-241, 34 figs., 2 tables.
- GURJANOVA, E. 1951. *Bokoplavy morei SSSR i sopredel'nyx vod* (Amphipoda, Gammaridea). *Opred. po Faune SSSR, Izd. Zool. Inst. Akad. Nauk*, 41: 1-1031, 705 figs.
- 1955. *Novye vidy bokoplavov* (Amphipoda, Gammaridea) iz severnoi chasti Tixogo Okeana. *Trudy Zool. Inst. Akad. Nauk SSSR*, 18: 166-218, 23 figs.
- SARS, G. O. 1895. Amphipoda. An account of the Crustacea of Norway with short descriptions and figures of all the species, 1: 8 and 711 pp., 240 pls., 8 suppl. pls.