

DESCRIPTION OF A LERNÆAN CRUSTACEAN (ACHTHERES CARPENTERI) OBTAINED BY LIEUT. W. L. CARPENTER, IN 1873, IN COLORADO.

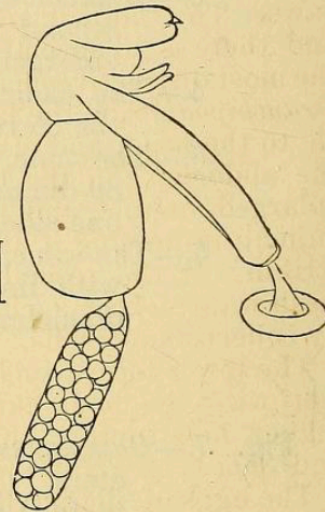
By A. S. PACKARD, JR., M. D.

CRUSTACEA.

*Achtheres Carpenteri*, n. sp. (Fig. 1.)—Head about half as long as the body, with very minute conical antennæ; the antennal region forming a large rounded lobe. The jaws large, finger-shaped. Anchor, or jaw-feet, large, widely separate; the space between them being narrow-oval, and united by the sucker, which is of the general shape of *Achtheres*. Abdomen rounded-oval, one-half longer than thick, with indications of three segments; the sutures nearly obsolete, however. Egg-sacs a little longer than the abdomen, regularly cylindrical, containing from about forty to sixty eggs, the eggs nearly one-half the diameter of the arms of the anchor-feet. Uniformly pale-white.

Length of body without egg-sacs, 0.15 inch; with egg-sacs, 0.25 inch. This should perhaps be regarded as the type of a subgenus of *Achtheres*, which it resembles more nearly than *Lernæocera*. The segments of the abdomen are very faintly indicated, and in the form of the head and appendages, and their degree of development, it seems intermediate between *Achtheres percarum* and *Cauloxenus stygius*, Cope, from Wyandotte Cave, Indiana.

Taken from trout, East River, August 29 (W. L. Carpenter).



*Achtheres Carpenteri*.