

Adoncholaimus panicus Cobb, 1930
(Fig. 93)

Description. Body length 40–46 mm. Maximum diameter 93–135 μm ($a = 43\text{--}59$). Head as in other species but cephalic papillae more pointed. Amphids 0.18 times c.d. wide. Excretory pore 1.5–2 buccal cavity lengths from anterior. Tail similar in shape to *A. thalassophygas*, 3.1–4 a.b.d. long.

A small structure posterior to the spicule tips is present in some specimens, and may represent the gubernaculum. Spicules 200 μm (3.3–4 a.b.d.). Four pairs of small papillae anterior to cloaca, more lateral papillae on conical portion of tail.

Demanian system opens on either side by a transverse row of usually 8 pores 1.75–2 a.b.d. preanal. Vulva at 50% of body length.

Distribution. Loch Etive, Scotland (muddy intertidal). Wrongly designated by Warwick and Gage (1975) as *A. lepidus* (De Man, 1889).

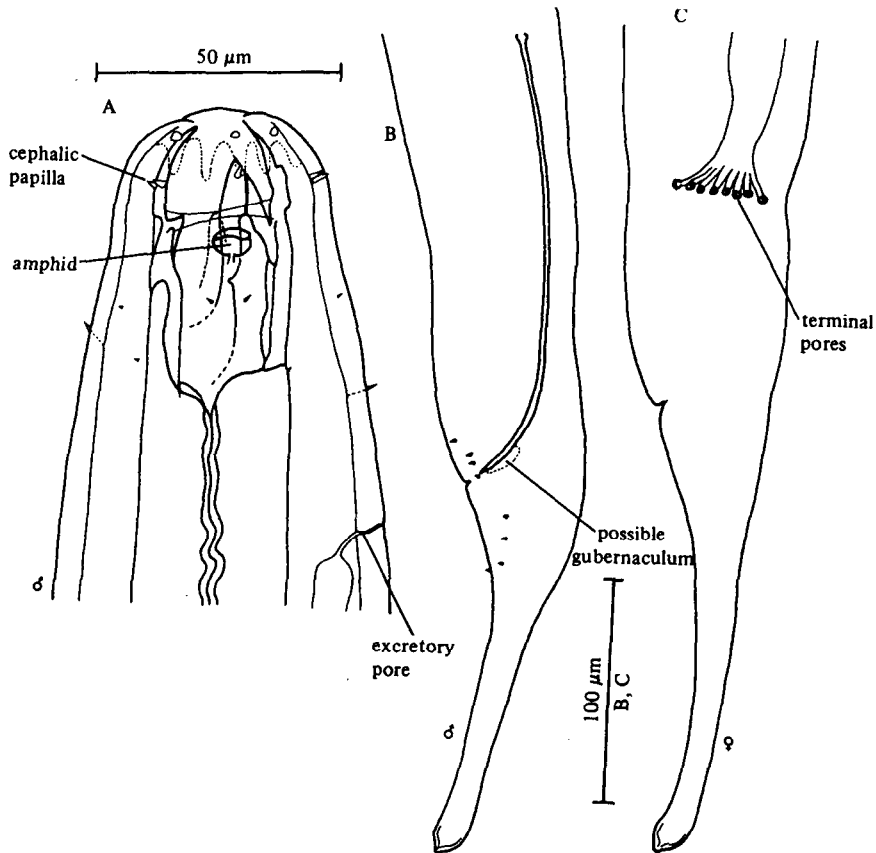


Fig. 93. *Adoncholaimus panicus*. A, Male head; B, Male tail; C, Female tail. Original.