

Bathylaimus paralongisetosus Stekhoven and De Coninck, 1933
(Fig. 124)

Description. Body length 2.2–2.3 mm. Maximum diameter 32–49 μm ($a = 46\text{--}71$). Cuticle with fine transverse striations. Lips high, rounded, striated on outer margins. Labial setae two-jointed, 0.58 h.d. long. Long cephalic setae 1.5 h.d., four-jointed; four shorter setae 0.2 h.d., unjointed. Amphids subspiral, 0.40–0.58 times c.d. in males, 0.26 times c.d. in females; level with posterior section of buccal cavity. Tail 3.2–4.1 a.b.d. long, conical in male but with distal half cylindrical in female. Male tail with two files of ventrolateral setae, and paired 13 μm terminal setae.

Spicules 35–37 μm , gubernaculum same length; both similar in form to *B. australis*.

Vulva at 62% of body length.

Distribution. Exe estuary (intertidal sand).

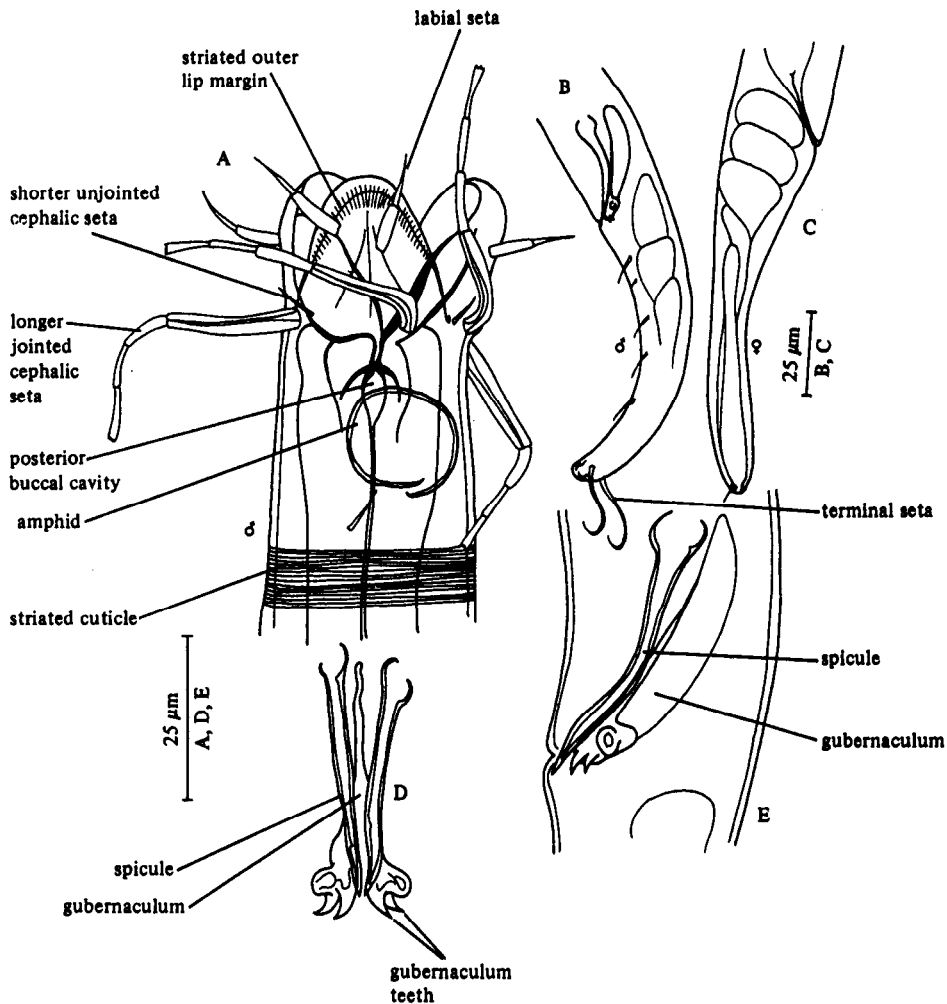


Fig. 124. *Bathylaimus paralongisetosus*. A, Male head; B, Male tail; C, Female tail; D, Spicules and gubernaculum (ventral); E, Spicules and gubernaculum (lateral). Original.