

Bathylaimus tenuicaudatus (Allgén, 1933)
(Fig. 126)

Description. Body length 1.6–2.1 mm. Maximum diameter 34–56 μm ($a = 33$ –48). Very fine transverse striation of cuticle sometimes discernible. Lips very high, rather pointed, striated on outer margins. Six labial setae two-jointed, 0.45 h.d. long. Longer cephalic setae four-jointed, 1.4–1.6 h.d.; shorter setae unjointed, 0.3 h.d. Amphids subspiral, much larger in male (0.5 times c.d.) than female (0.2 times c.d.); situated at base of buccal cavity. Tail 5.7–6.6 a.b.d. long. Numerous circumcloacal setae in male and two ventro-lateral files of setae down tail length.

Spicules 29–30 μm long.

Gubernaculum 30 μm , similar to *B. australis* (i.e. each half of gubernaculum with two distal teeth).

Vulva at 54–62% of body length.

Distribution. Exe estuary; Loch Etive, Scotland (intertidal sand).

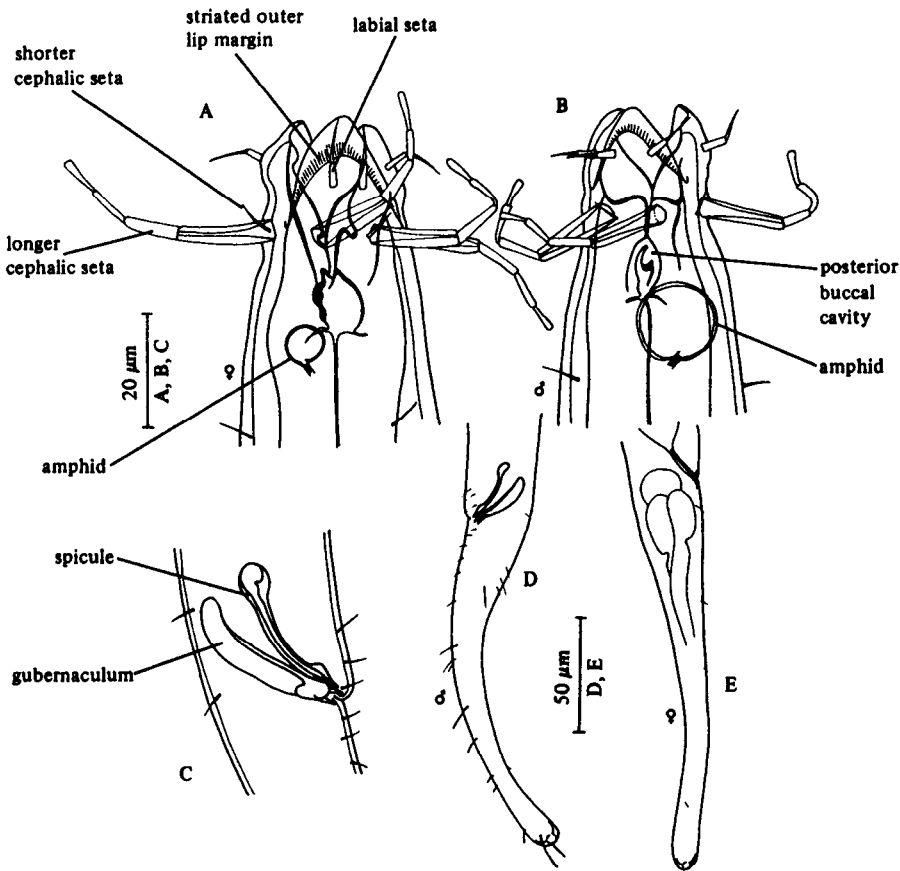


Fig. 126. *Bathylaimus tenuicaudatus*. A, Female head; B, Male head; C, Spicules and gubernaculum; D, Male tail; E, Female tail. Original.