

*Enoplus communis* Bastian, 1865

(Fig. 43)

*Description.* Body length 5–10 mm ( $a = 25\text{--}50$ ). Six longer cephalic setae 0.4 h.d., four others about two-thirds this length. Prominent pigmented eyespots. Amphids 0.1 c.d. wide, anterior to base of cephalic capsule. Tail a little over 2 a.b.d., posterior third cylindrical.

Gubernaculum in three pieces: paired lateral pieces with lateral wings; median ventral piece less obvious but composed of beard-like strands, best seen in ventral view. Spicules curved,  $230\ \mu\text{m}$  (1.4 a.b.d.), with four or five scale-like plates on their ventral surfaces near the middle. Precloacal supplement very large, three-quarters of the spicule length, trumpet shaped, about 1 tail length in front of cloaca.

*Distribution.* A very common species recorded from a large number of localities around the British Isles, typically found in seaweeds and holdfasts intertidally or in shallow water.

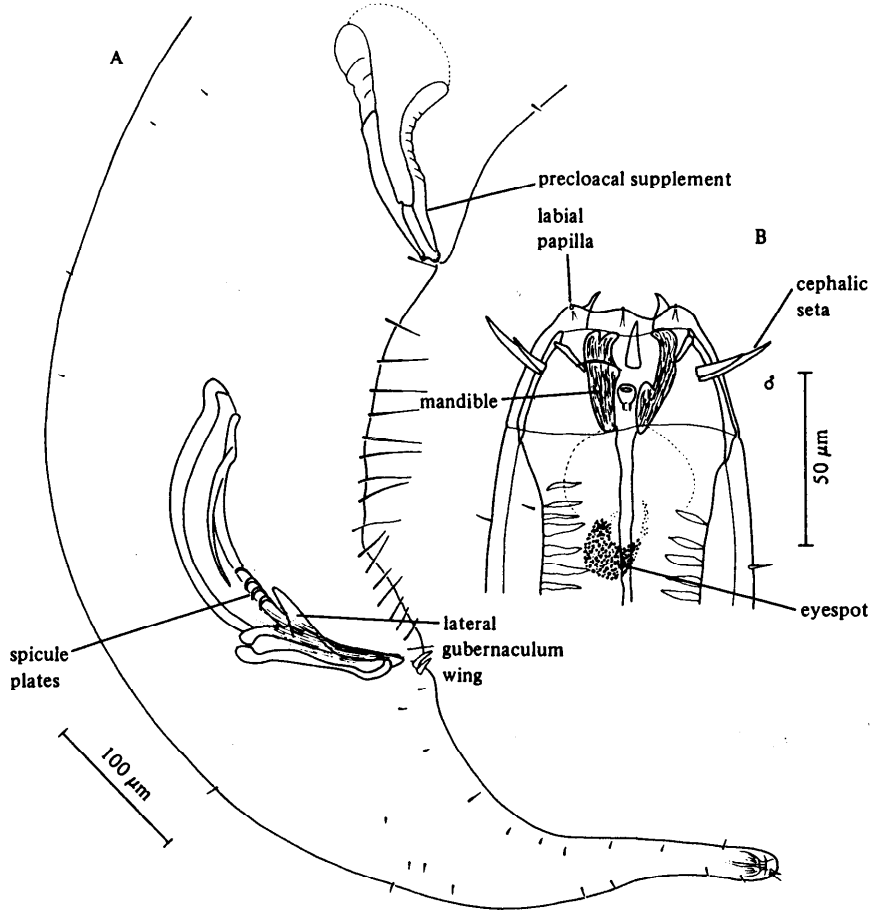


Fig. 43. *Enoplus communis*. A, Male tail; B, Male head. Original.