

Halaphanolaimus pellucidus Southern, 1914
(Fig. 202)

Description (from Southern, 1914). Body length 1.5–1.6 mm. Maximum diameter 36–46 μm ($a = 33\text{--}41$). Cuticle with lateral longitudinal unstriated band. Four cephalic setae about 0.5 h.d. Amphids 0.35 c.d. wide, about 1.5 h.d. posterior. Oesophagus with oval posterior bulb. Tail about 3.5 a.b.d., conico-cylindrical.

Spicules 47–52 μm (1.3 a.b.d.), slender, arcuate with proximal cephalisation. Gubernaculum with dorsal apophysis. Six or seven tubular precloacal supplements and 2–4 (normally three) similar supplements in oesophageal region, 20 μm long, slightly swollen proximally, bifid distally and the tip surrounded by a cuticular ring (Fig. 202C).

One female specimen examined by Southern had two tubular supplements in the oesophageal region and a single preanal supplement.

Distribution. Clew Bay, West Ireland (sublittoral sand and shells).

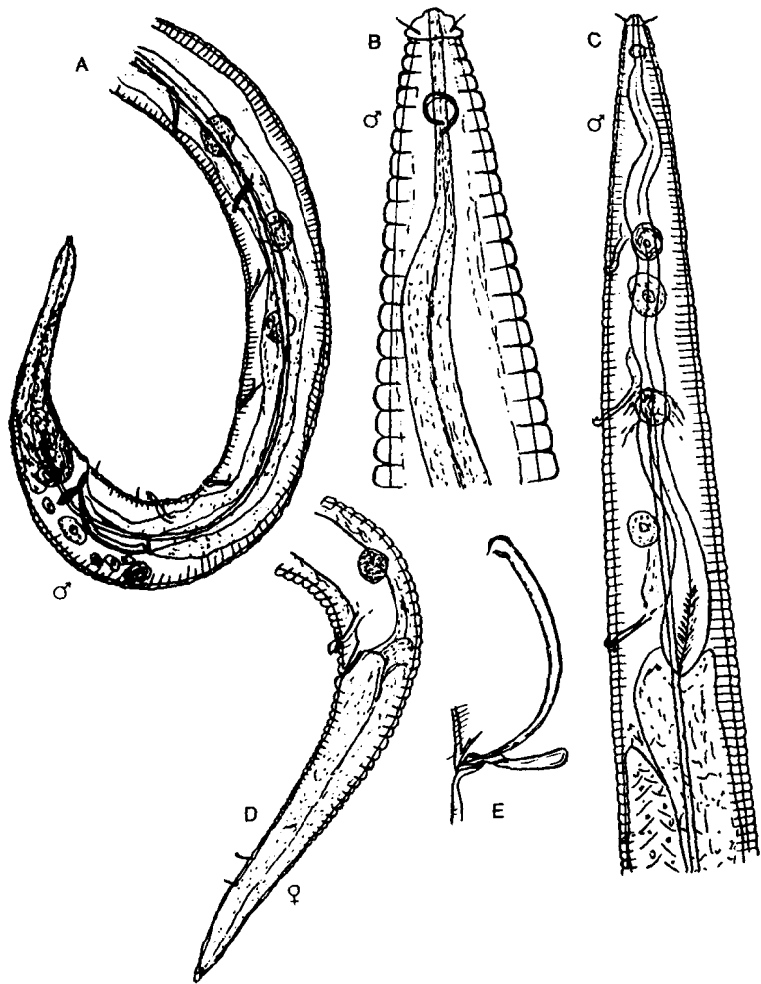


Fig. 202. *Halaphanolaimus pellucidus*. A, Male tail; B, Male head; C, Anterior end of male; D, Female tail; E, Spicules and gubernaculum. From Southern (1914).