

Pareurystomina scillonensis Warwick, 1977

(Fig. 118)

Description. Body length 7.1–7.8 mm. Maximum diameter 71–80 μm (a = 88–110). Cuticle smooth. Six labial papillae small, rounded. Cephalic setae 16 and 6.5 μm (male), 19 and 7.5 μm (female). Buccal cavity with single right subventral tooth slender, pointed; two complete circles of large denticles and an incomplete circle of very fine denticles. Amphids 10–12 μm wide, dorsolateral. Oesophagus 0.16 times body length, no posterior bulb. Excretory pore opens at level of cephalic setae. *Flattened cervical setae* extend posteriorly as far as the nerve ring. Tail tapering to a fine point, 4 a.b.d. (male), 6 a.b.d. (female).

Spicules arcuate, hooked distally, 82 μm long.

Gubernaculum dorsally directed, solid, 37 μm . Male tail with a pair of subventral double-pointed papillae about half-way down its length. Two winged supplements about 4 and 7 a.b.d. in front of cloaca, wings small and symmetrical. A small raised area of cuticle pierced by a fine pore about 1.5 a.b.d. in front of cloaca. A pair of short setae immediately anterior to cloaca.

Vulva at 69% of body length.

Distribution. Isles of Scilly (fine sublittoral sand).

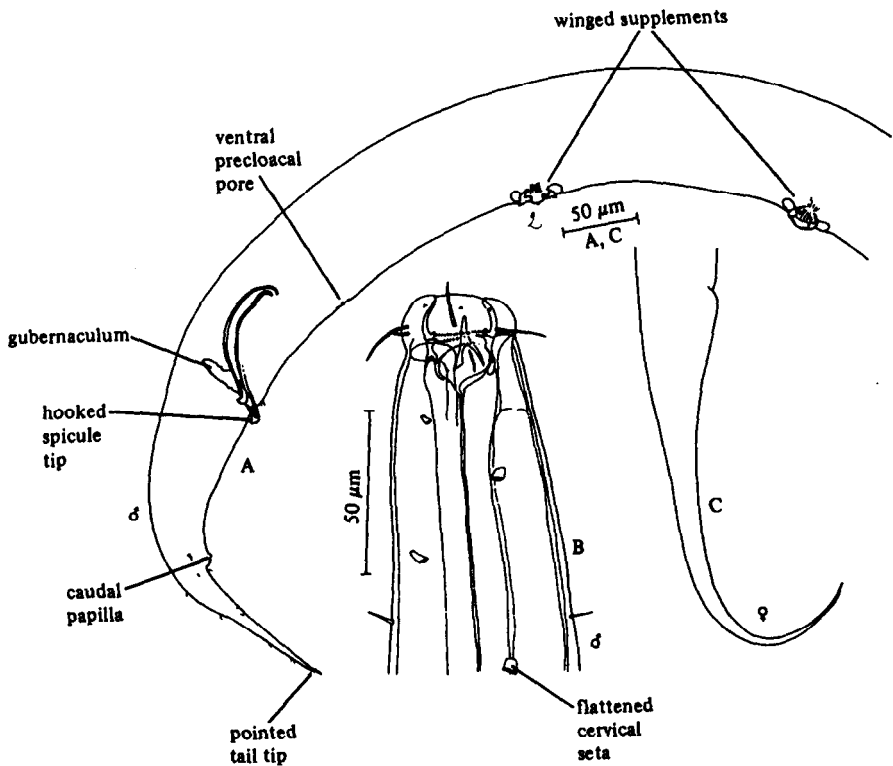


Fig. 118. *Pareurystomina scillonensis*. A, Posterior end of male; B, Male head; C, Female tail. Original.