

Pseudocella trichodes (Leuckart, 1849)
(Fig. 80C)

Description. There are several records of this species from Britain but no description. The following information and the figure comes from Stekhoven and Adam (1931), collected on the Belgian coast. Head basically similar to *P. coecum*. Tail bears a postcloacal supplement, situated near the tail tip,

with 4 grooves leading to the interior. Two long setae are situated posterior to cloaca. Anterior to the cloaca are 15 papillae with small spines.

Distribution. West Ireland (under stones); Plymouth (among seaweed); Northumberland (in intertidal rock crevices and kelp holdfasts); Isles of Scilly (among seaweed).

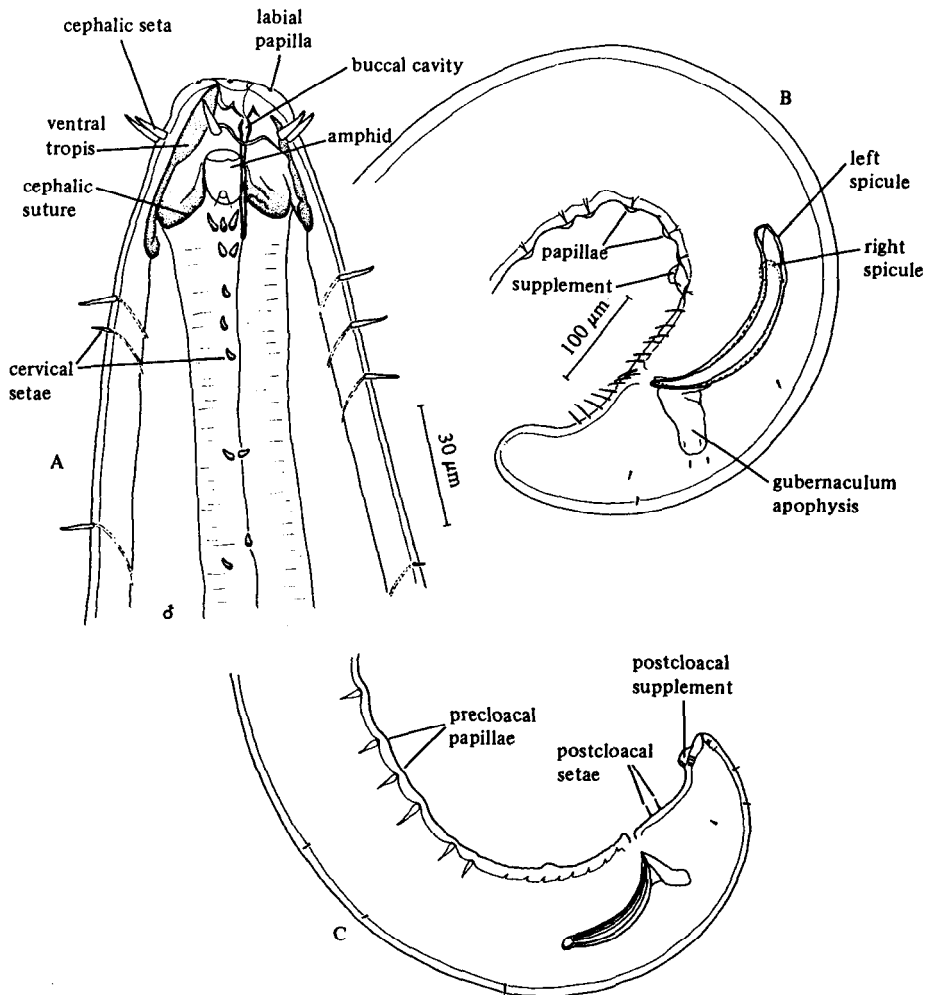


Fig. 80. *Pseudocella coecum*. A, Male head; B, Male tail (original). *Pseudocella trichodes*. C, Male tail (from Stekhoven and Adam, 1931).