

Pterygonema platti Zhang, 1983
(Fig. 223)

Description (from Zhang, 1983). Body length 0.5–0.6 mm. Maximum diameter 14 μm ($a = 37\text{--}40$). 250–252 cuticle annules of plates 1.5 μm wide and 0.5 μm long, forming eight longitudinal ridges. Four 17.5 μm (2.0 h.d.) cephalic setae. Pairs of subventral setae on tail, somatic setae otherwise sparse. Amphids $11 \times 6.5 \mu\text{m}$, loop-shaped, situated on a shield-like cuticular plate (plaque). The posterior end of the plaque has a distinctive cuticular spur projecting forwards between the two limbs of the amphid. Buccal cavity absent. Oesophagus narrow, widening slightly at posterior end (Fig. 223B). Tail about 6 a.b.d.

Spicules 17 μm (1.3 a.b.d.), strongly arcuate with a ventral ala. Gubernaculum with dorsal apophyses. Single precloacal seta.

Distribution. Loch Ewe, West Scotland (sublittoral sand).

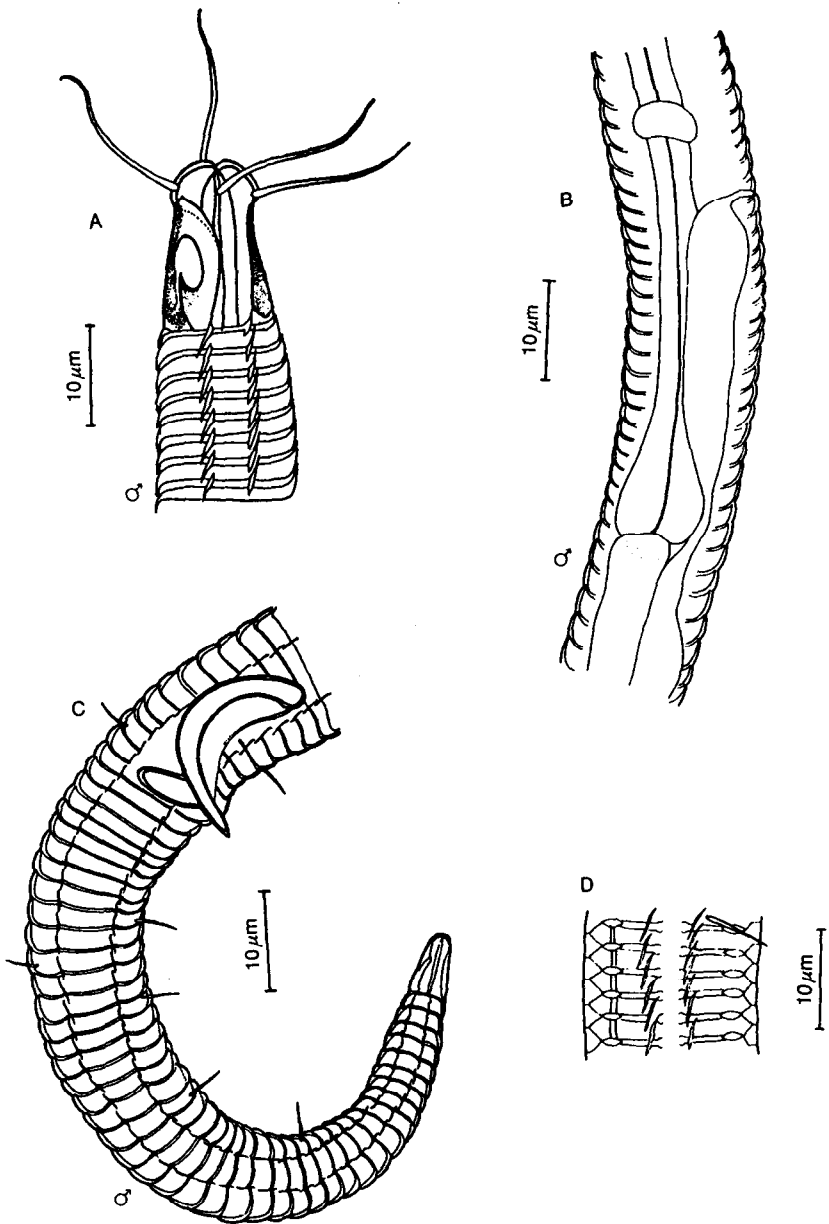


Fig. 223. *Pterygonema platti*. A, Male head; B, Posterior oesophageal region; C, Male tail; D, Cuticle pattern in mid-body. From Zhang (1983).