

Rhabditis marina Bastian, 1865

(Fig. 136)

Description. Body length 1.4–2.4 mm ($a = 13$ –24). Six labial papillae and ten short cephalic setae in two circles. Amphid a small opening just posterior to cephalic setae. Mouth surrounded by six lobed lips. Buccal cavity cylindrical. Oesophagus characteristic with distinct bulb in the middle as well as posteriorly: length about 0.15 times body length. Tail short and conical.

Spicules 40–70 μm .

Gubernaculum about half length of spicules. Cloaca surrounded by bursa copulatrix (flaps of cuticle) supported by nine pairs of long narrow papillae. Single reflexed testis.

Two reflexed ovaries. Vulva at 50–54% of body length.

Distribution. Reported from many locations around the coast of the British Isles; found intertidally in sand, weeds and especially in association with rotting seaweed.

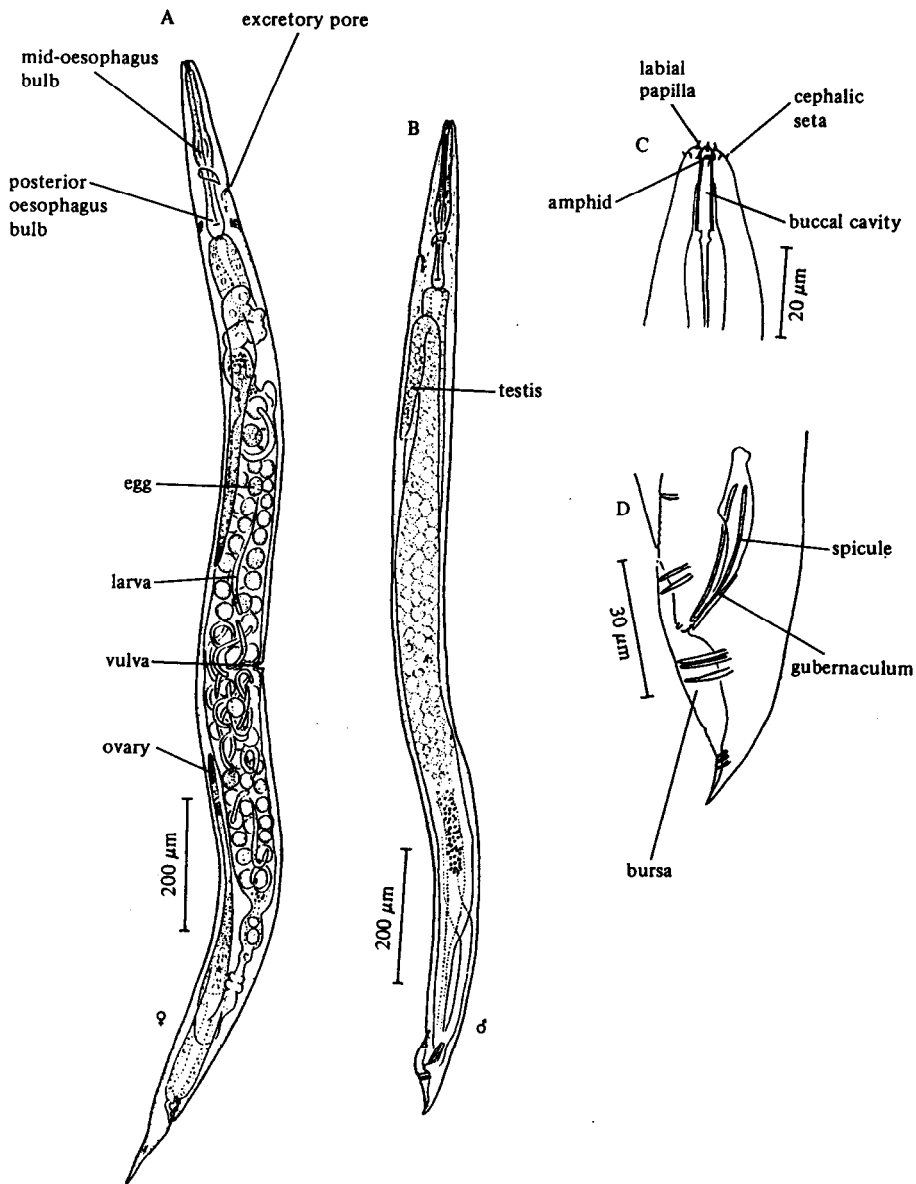


Fig. 136. *Rhabditis marina*. A, Entire female containing eggs and larvae; B, Entire male; C, Head; D, Male tail (from Inglis and Coles, 1961).