

Spiliphera gracilicauda De Man, 1893

(Fig. 40 A-C)

Description. Body length 1.2–1.3 mm. Maximum diameter 60–65 μm ($a = 18$ –21). Cuticle with transverse rows of simple rounded punctations, more randomly scattered in head region. Buccal cavity 36 μm long: three teeth with bilobed rounded bases and long posteriorly directed apophyses (Fig. 40C). Six small conical labial papillae and four long (23–24 μm) cephalic setae only slightly shorter than the h.d. Amphids just posterior to the cephalic setae, a transversely oval loop 7 μm wide. Oesophagus with posterior elongated bulb 58–65 μm long and 36–39 μm wide (Fig. 40B). Relatively long scattered body setae. Tail elongate, 5.6–5.9 a.b.d., the same shape in both sexes.

Spicules 67 μm , slightly bent, with central lamella. Gubernaculum 29 μm with oval lateral projections distally.

Distribution. Falmouth, South West England; Plymouth, South West England; Isles of Scilly (intertidal algae); Blacksod Bay, West Ireland (among *Spirorbis* tubes).

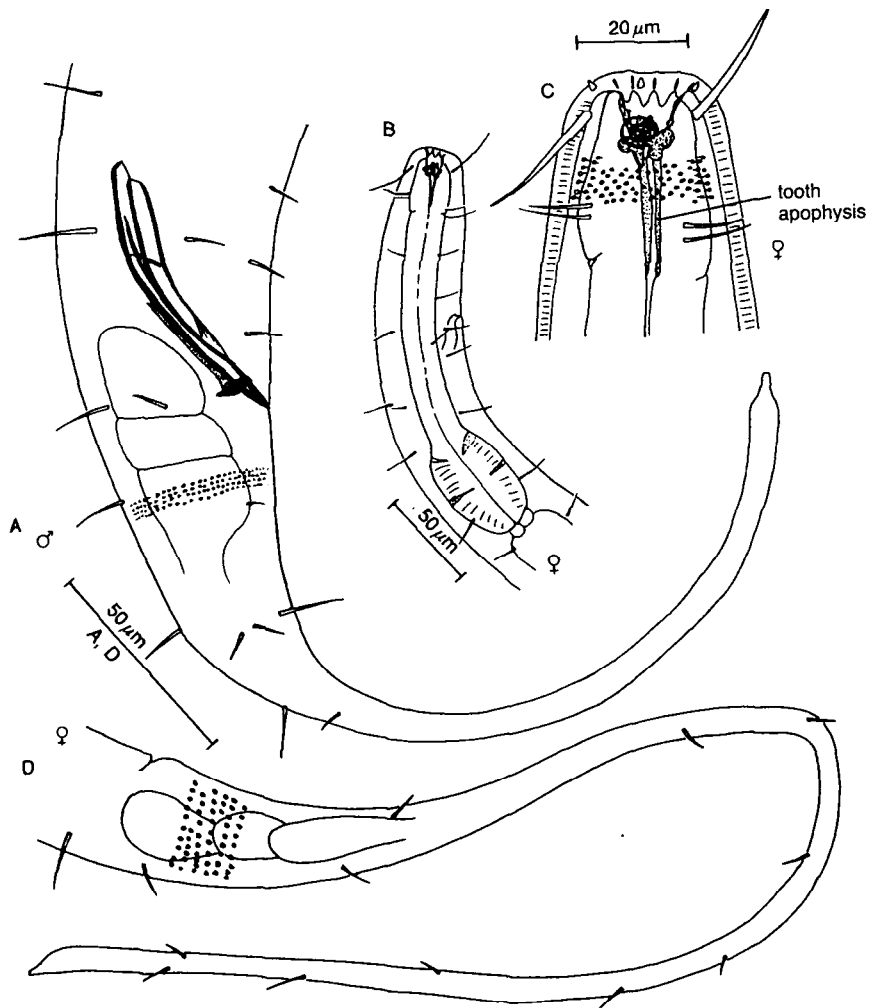


Fig. 40. *Spiliphera gracilicauda*. A, Male tail; B, Anterior end of female; C, Female head (original). *Spiliphera dolichura*. D, Female tail (from Wieser, 1954).