

*Spirinia gerlachi* (Luc and De Coninck, 1959)  
(Fig. 150)

*Description.* Body length 1.4–1.6 mm. Maximum diameter 40–60  $\mu\text{m}$  ( $a = 27\text{--}38$ ). Similar to *S. laevis* (p. 326) except: cephalic setae 11  $\mu\text{m}$  (0.6 h.d.); cuticle with long, up to 50  $\mu\text{m}$ , somatic setae throughout the body, in eight files (Fig. 150C), with shorter setae between them; amphids 9  $\mu\text{m}$  (0.5 c.d.) wide, situated far anterior (cephalic setae at posterior end of amphid); buccal cavity with a distinct dorsal and two smaller subventral teeth; spicules not distinctly cephalate; tail 4 a.b.d.; vulva at 48–49% of body length.

*Distribution.* Isles of Scilly (coarse sand at low water).

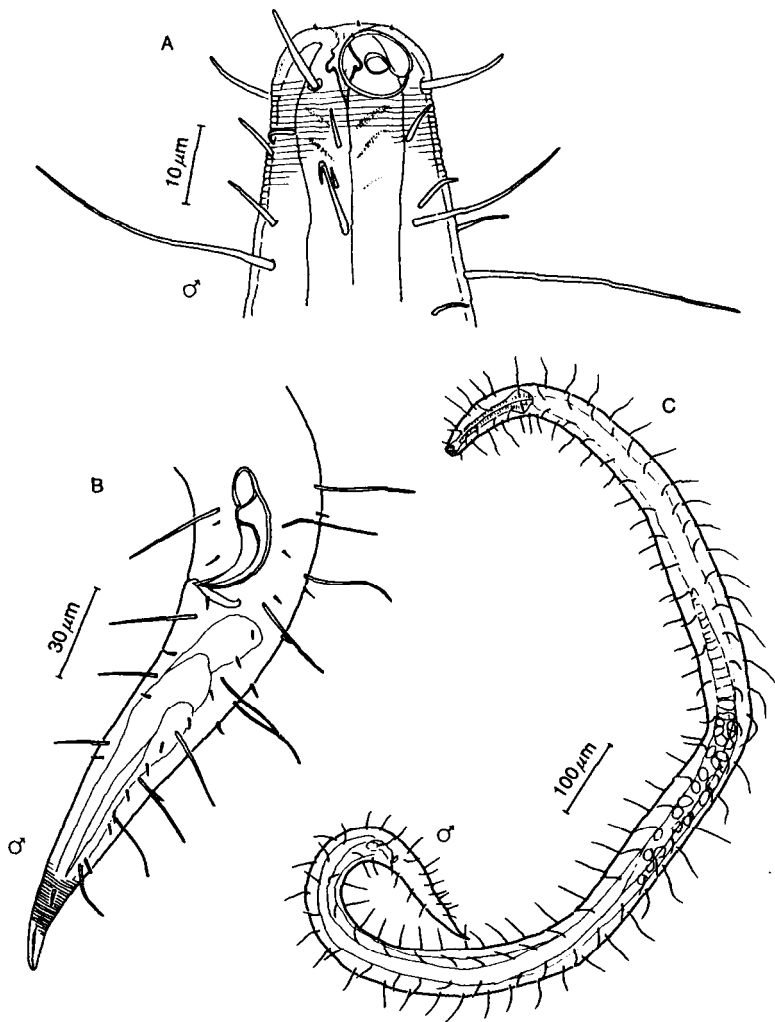


Fig. 150. *Spirinia gerlachi*. A, Male head; B, Male tail; C, Entire male. Original.