

*Thoracostoma angustifissulatum* Mawson, 1956

(Text-figs. 148-151)

MATERIAL STUDIED. 1 ♂. 32° 16' S./18° 17' E. on 2.7.61 from coarse white sand at a depth of 27 metres (WCD 99). B.M. (N.H.), Reg. No. 1963. 21.

Ratios			
<i>a</i>	<i>b</i>	<i>c</i>	Body Length (mm.)
42.9	5.1	69.8	9.0

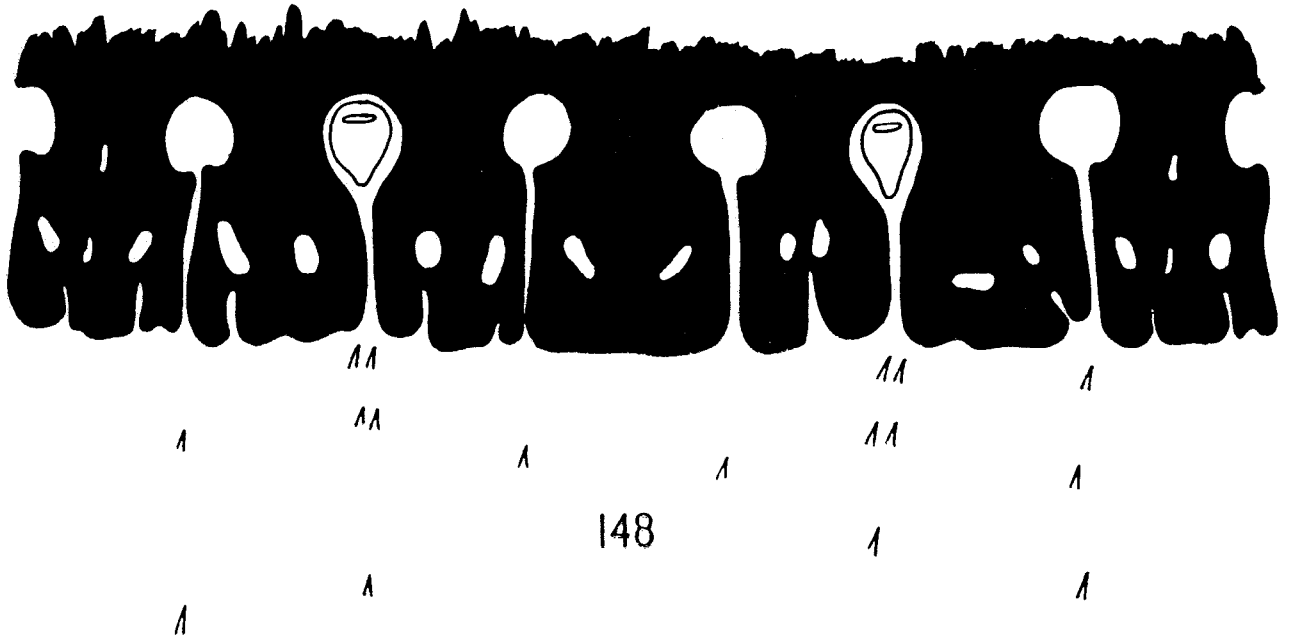
MEASUREMENTS (in mm.). Body breadth : 0.21. Oesophagus length : 1.76. Cephalic capsule, depth/diameter at posterior edge : 0.042/0.060. Distance of nerve ring from anterior end of body : 0.54. Distance of eye spots from anterior end of body : 0.159. Tail length : 0.129. Cloacal diameter : 0.186. Spicule length : 0.213. Gubernaculum length : 0.148. Distance of pre-cloacal supplement anterior to cloacal opening : 0.114.

The head is exactly as described by Mawson (1956) which is the same as that of *T. jae* (see page 333). The posterior edge of the capsule is somewhat incised and the lacunae pierce each lobe relatively far anterior to the posterior edge of the capsule, roughly half-way between that edge and the level of the cephalic setae (Text-fig. 148). This also is stressed by Mawson. I have been unable to see any nuchal setae but Mawson points out that they are small and sparse in her specimens. There are paired eye spots with lenses.

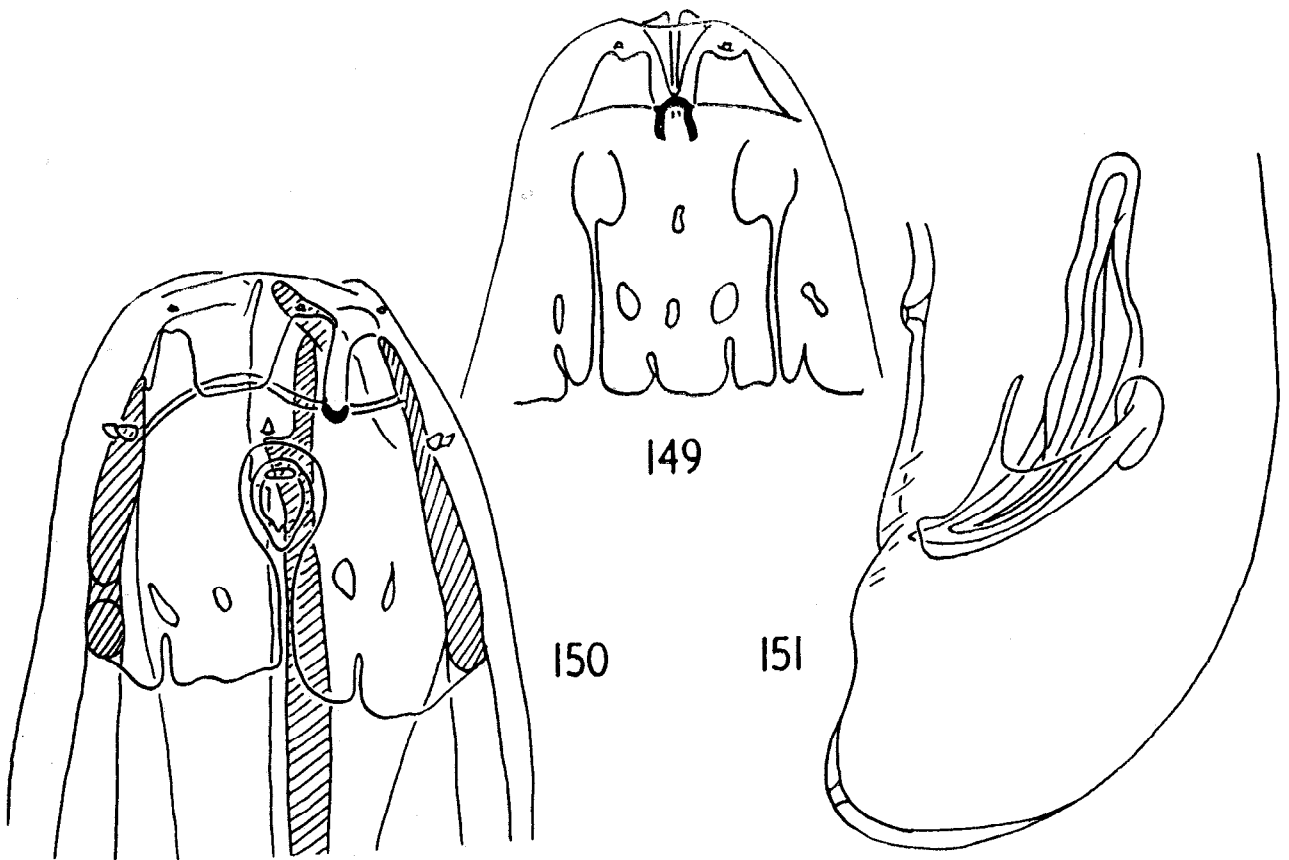
The tail is very short and stout with the papillate pre-cloacal supplement lying relatively close to the cloacal opening. Anterior to the supplement are five pairs of papillae. The spicules are massive terminating distally in sharpish points. The gubernaculum is large with a distal process and a massive rounded proximal end. The distal end of the gubernaculum is blunt (Text-fig. 151).

#### DISCUSSION

Mawson records this species from many Arctic and Subantarctic localities. For details reference should be made to the original publications, Mawson : 1956, 1958, 1958a. The species is characterized by the form of the mouth armature, the length of the cephalic capsule, the occurrence of the lacunae of the capsule relatively far anterior to the posterior edge, and the massive form of the gubernaculum.



148



149

150

151

FIGS. 148-151. *Thoracostoma angustifissulatum*. Fig. 148. Posterior part of the cephalic capsule with the ventral lobe at each end and the dorsal lobe in the centre. Anterior edge not in detail. Fig. 149. Ventral view of head. Fig. 150. Lateral view of head with the dorsal surface to the right. Fig. 151. Lateral view of male tail.