

*Trefusia zostericola* Allgén, 1933  
(Fig. 135)

*Description.* Body length 3.6 mm. Maximum diameter 30  $\mu\text{m}$  ( $a = 118$ ). Labial setae small, fine, pointed. Six 14  $\mu\text{m}$  cephalic setae three-jointed. Four cervical setae 9  $\mu\text{m}$ , posterior to amphids. Amphids 6  $\mu\text{m}$  wide. Tail 7.3 a.b.d. long.

Spicules 55  $\mu\text{m}$ , arcuate, slightly cephalate proximally.

Gubernaculum a slender rod with two well-developed lateral pieces. Precloacal supplements present.

*Distribution.* Loch Ewe, Scotland (intertidal sand).

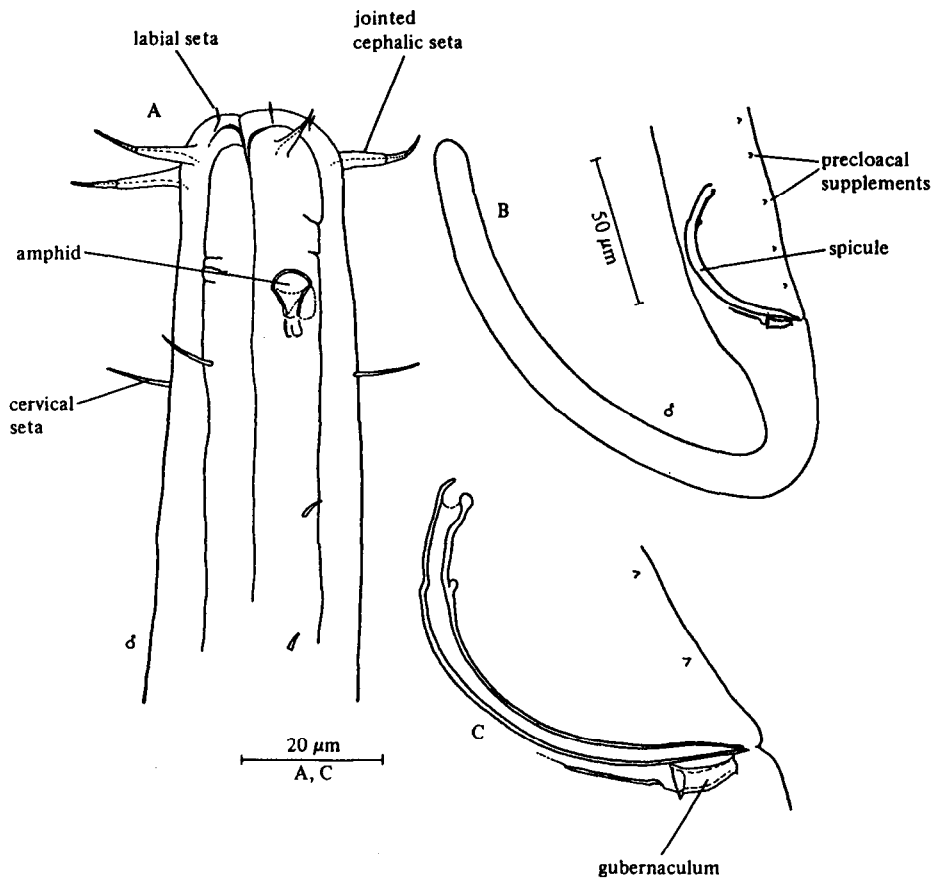


Fig. 135. *Trefusia zostericola*. A, Male head; B, Male tail; C, Spicules and gubernaculum. Original.