

M17

NARRATIVE OF THE VOYAGE

OF

H.M.S. RATTLESNAKE,

COMMANDED BY THE LATE

CAPTAIN OWEN STANLEY, R.N., F.R.S. &c.

DURING THE YEARS 1846-1850.

INCLUDING DISCOVERIES AND SURVEYS IN

NEW GUINEA, THE LOUISIADE ARCHIPELAGO,

ETC.

TO WHICH IS ADDED THE ACCOUNT OF

MR. E. B. KENNEDY'S EXPEDITION

FOR THE EXPLORATION OF THE CAPE YORK PENINSULA.

BY JOHN MACGILLIVRAY, F.R.G.S.

NATURALIST TO THE EXPEDITION.

PUBLISHED UNDER THE

Sanction of the Lords Commissioners of the Admiralty.

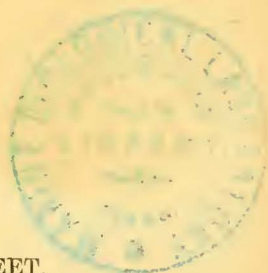
IN TWO VOLUMES.

VOL. II.

LONDON:

T. & W. BOONE, 29, NEW BOND STREET.

1852.



ACCOUNT OF MR. E. B. KENNEDY'S EXPEDITION.

	PAGE
Narrative of Mr. W. Carron—Statement of Jackey-Jackey—Dr. Vallack's statement—Extracts from Mr. T. B. Simpson's Log	119

APPENDIX.

COMPARATIVE VOCABULARY of two of the Languages of the Neighbourhood of Cape York	277
COMPARATIVE VOCABULARY of three of the Languages of the South-East Coast of New Guinea and the Louisiade Archipelago	317
REMARKS ON the Vocabularies of the Voyage of the Rattlesnake, by R. G. LATHAM, M.D.	331
CATALOGUE of the Birds of the North-East Coast of Australia and Torres Strait	355
ON the Mollusca collected by Mr. Macgillivray during the Voyage of the Rattlesnake, by Professor EDWARD FORBES, F.R.S.	360
DESCRIPTIONS of some new species of Annulosa collected by Mr. Macgillivray during the Voyage of H.M.S. Rattlesnake, by ADAM WHITE, Esq., F.L.S.	387

LIST OF PLATES.

VOL. II.

Natives of Redscar Bay, New Guinea	<i>Frontispiece</i>
Funeral Screen, Mount Ernest	<i>to face p. 37</i>
Interior of Darnley Island Hut 47
New Shells	<i>to face p. 375</i>
New Shells 381
New Insects 387
New Crabs 391

CHART of Torres Strait, New Guinea, and Louisiade Archipelago.

Fig. 3.

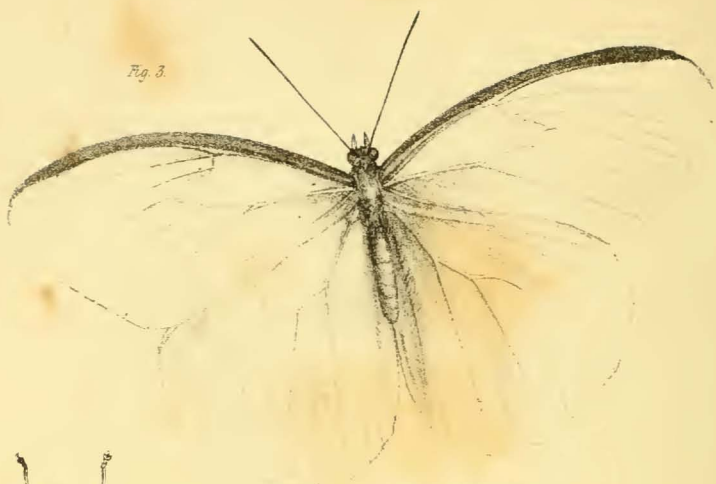


Fig 1



Fig 2

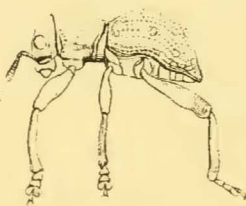
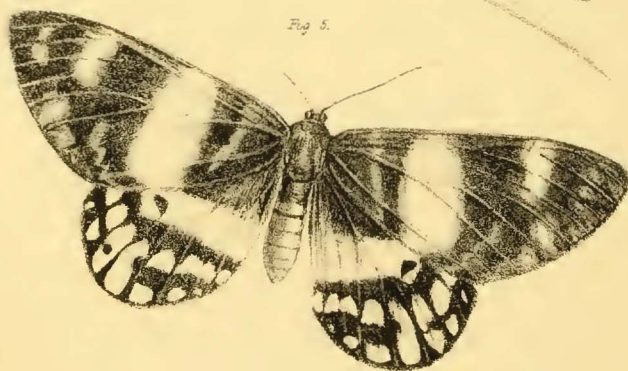


Fig 4



Fig 5.



- 1 2. Pachyrhynchus Stanleyanus. White.
- 3 4. Drasilla Mylæcha. Westw.
- 5. Eusemia-Mariana. White.

No. VI.

DESCRIPTIONS

OF SOME

APPARENTLY NEW SPECIES OF ANNULOSA,

(COLLECTED BY MR. MACGILLIVRAY DURING THE
VOYAGE OF H.M.S. RATTLESNAKE,)

BY

ADAM WHITE, F.L.S.,

ASSISTANT ZOOLOGICAL DEPARTMENT, BRITISH MUSEUM.

AMONG the very numerous Insects and Crustacea, collected by Mr. Macgillivray during the voyage of the Rattlesnake, the following have been selected for illustration; references to and descriptions of some of the Diptera, Homoptera, and Hemiptera, collected by him, have appeared in the Catalogues of the British Museum drawn up by Messrs. Walker and Dallas, while the names and descriptions of others will appear in catalogues in preparation. A fine species of the class Crustacea, discovered by him, has been described and figured in the Illustrated Proceedings of the Zoological Society. (*Cancer* [*Galene*] *dorsalis*, White.)

INSECTS. COLEOPTERA.

Chrysodema pistora, Laporte and Gory. Buprestidæ,
t. 6, f. 33.

Hab. Australia (Cape Upstart). Mr. Macgillivray informs me, that the specimens of this species were observed by him coming out of a dead tree (Casuarina).

PACHYRHYNCHUS STANLEYANUS.* Tab. iv. fig. 1, 2.

Pachyrhynchus nigerrimus, maculis parvis squamosis plurimis viridiscenti-albidis.

Hab. Pariwara Islands, New Guinea. Four specimens.

Head between the eyes somewhat rugose, some of the rugose punctures with pale greenish white scales; an abbreviated longitudinal impressed line down the front. Beak short and thick (somewhat as in *Pachyrhynchus Cumingii*, Waterhouse). Thorax irregularly and somewhat coarsely punctured, the sides somewhat wrinkled in front, the punctures scaled, a triangular depression on the posterior part of thorax, the bottom is covered with scales, at least in some specimens, and there are three spots similarly scaled and placed somewhat transversely: the *Elytra* with eight to ten punctured lines, running somewhat irregularly, especially towards the sides, each elytra with ten, twelve, or more spots of scales, arranged longitudinally in spots on the sides, and largest towards the end. Under side of the mesothorax and metathorax with many greenish scales. *Legs* thick, polished, and with scattered grey hairs proceeding from the punctures.

I have named this somewhat "mourning" *Pachyrhynchus* after Captain Owen Stanley and his father, the late venerable Bishop of Norwich and President of the Linnean Society. Both of these gentlemen were fond of natural history, especially the father, who was a good observer of the habits of birds. The son, Captain Owen Stanley, was an accurate, though not very practised draughtsman; and I recollect with pleasure his pointing out to me, at one of the soirees at Brook Street, a volume of sketches (coloured)

* In memoriam Owen Stanley, in classe Britannica Navarchi, species hæc distincta et peculiaris nominatur.

made by him on one of his voyages, in which objects of natural history were ably introduced. He encouraged natural history researches.

HYMENOPTERA.

TRIGONALYS COMPRESSUS. Smith. Trans. Ent. Soc. Lond.
n. ser. I. p. . pl. 16. f. 2.

Sphex compressa. *De Geer. Mem. III.*

Trigonalys bipustulatus. *Smith (olim) Ann. & Mag. Nat. Hist. VII. (1851.)*

Hab. Nest of *Polistes Lanio*. Brazil.

Among the Hymenoptera, few genera have created greater dispute than the anomalous genus *Trigonalys* of Westwood. Mr. Macgillivray one day brought to the British Museum the nest of a Brazilian *Polistes*. My friend, Mr. Frederick Smith, is well known for his profound knowledge of the Hymenoptera, Exotic and British, which, though he has studied them *only* fourteen years, are better known to him, perhaps, than to any other living Entomologist;—the instant that he looked at the nest, he exclaimed, “Why, here is *Trigonalys!*” and certainly a large, black-headed creature, not very like *Polistes*, protruded from one of the cells. Mr. Smith, on the 7th April, 1851, communicated this piece of information to the Entomological Society of London, and in their Transactions his brief memoir was lately printed. I cannot do better than give it in Mr. Smith’s own words. Mr. Smith, subsequently to the reading of the paper, ascertained that the species had been described in the great work of De Geer, a book of which it would be well to have a condensed new edition. Mr. Smith says:

“John Macgillivray, Esq., Naturalist to Her Majesty’s Ship Rattlesnake, lately presented to the British Museum the nest of a South American species of *Polistes*, which he says is very abundant at St. Salvador, where even in the streets it attaches its nest under the eaves of houses; the species is the

Polistes Lanio of Fabricius, and in all probability the *Vespa Canadensis* of Linnæus; a specimen of the species is preserved in the Banksian Cabinet. On examining the nest, I found it consisted as usual of a single comb of cells, having in the centre at the back a short footstalk, by which the nests are attached in their position; the comb contained sixty-five cells, the outer ones being in an unfinished state, whilst twenty-two of the central ones had remains of exuvæ in them, and one or two closed cells contained perfect insects ready to emerge; about half a dozen of the wasps had the anterior portion of their bodies buried in the cells, in the manner in which these insects are said to repose. In one cell I observed the head of an insect evidently of a different species, it being black and shining. On extricating it, I discovered it to be a species of *Trigonalys*; I subsequently carefully expanded the insect, and it proved to be the *Trigonalys bipustulatus*, described by myself in the Ann. and Mag. of Natural History, vol. vii., 2nd Series, 1851, from a specimen captured at Para by Mr. Bates, now in the possession of William Wilson Saunders, Esq. The insect was not enveloped in any pellicle, nor had the cell been closed in any way; the wings were crumpled up at its side, as is usual in Hymenopterous insects which have not expanded them, proving satisfactorily that it had never quitted the cell, and that *Trigonalys* is the parasite of *Polistes*.

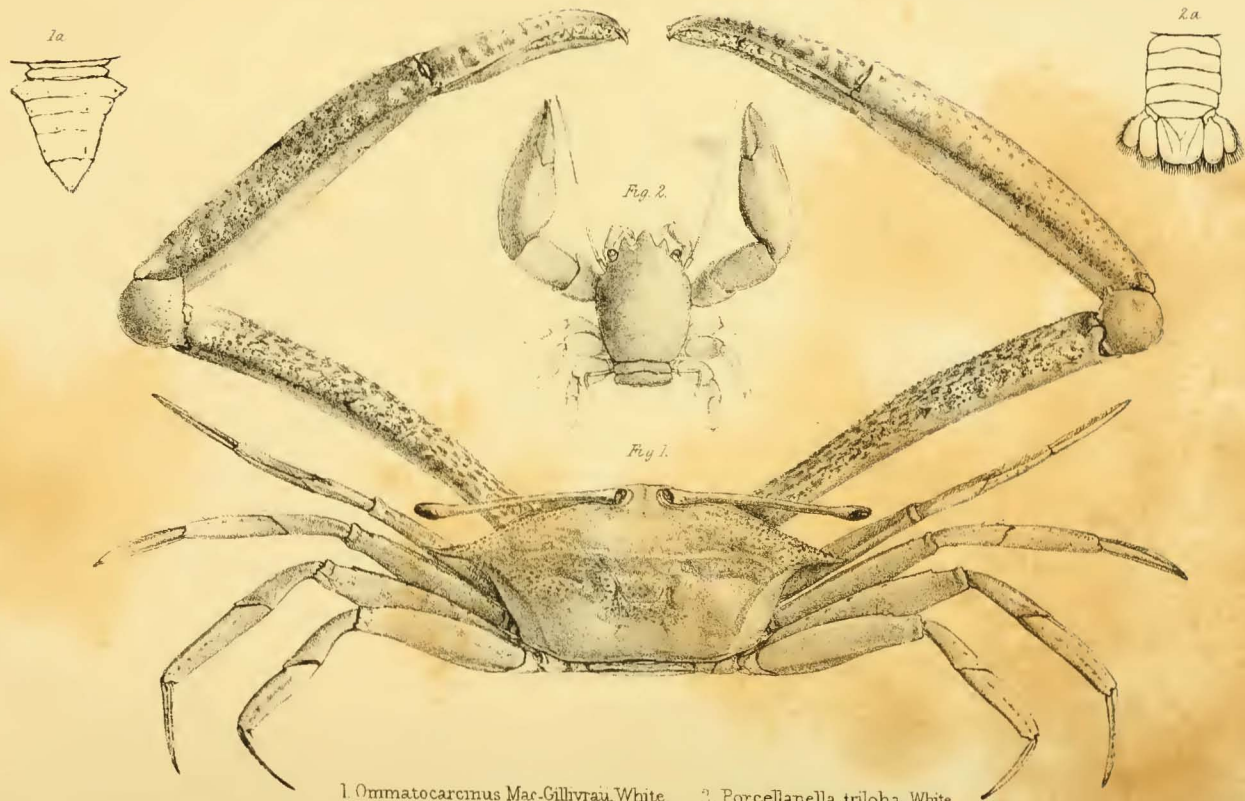
This discovery is one of much interest, proving the relationship of the insect to be amongst the pupivora, to which family it had been previously assigned by Mr. Westwood, see Vol. III. Ent. Trans. p. 270. The specimen is seven lines in length, entirely black, the head shining, the thorax and abdomen opaque, and having two white maculæ touching the apical margin of the basal segment above; the wings are smoky, the antennæ broken off. Of one of them I found subsequently seventeen joints—the perfect insect in the possession of Mr. Saunders having twenty joints.”

LEPIDOPTERA.

Drusilla Mylæcha, Tab. iv. fig. 1, 2.

This fine butterfly* was found flying in considerable plenty in the woods of one of the islands of the Louisiade Archipelago; it forms a very interesting addition to a genus, of which but few species are known, and is allied to the *Drusilla Catops* of Dr. Boisduval, described and figured

* Described (but not figured) by Mr. Westwood, in the Transactions of the Entomological Society of London, New Series, Vol. I., p. 175 (1851), from Mr. M.'s specimens in the British Museum. Mr. W. felt anxious to describe this striking *Drusilla*.



1. *Ommatocarcinus Mac-Gillivraii*, White. 2. *Porcellanella triloba*, White.

in the "Voyage de l'Astrolabe." The upper sides of the wings of the *Drusilla Mylæcha* are of a pure white with a silky lustre, the front edge of the fore wings margined with deep brown both above and below; in the male there is a slender white line on the upper side running close to the edge, and extending beyond the middle of it; the two discoidal veins in the male are brown on the upper side, and the edge of the upper side of the lower wings is brown. The under side of the lower wings has a dark brown band at the base, widest close to the attachment of the wing and narrowing to a large ocellus which it surrounds in the form of a narrow brown ring; the black ocellus has a very small white pupil with a slight bluish crescent on the inside, and is surrounded by a fulvous ring; there is a second black ocellus nearer the hind edge than the middle, with a small white pupil and a wideish fulvous ring, separated from the white of the wing by a narrow brown ring; head, antennæ, legs, and thorax in front brown; palpi fulvous.

The figures are of the size of nature, and carefully drawn by Mr. Wing.

Eusemia Mariana, Tab. iv. fig. 3, 4.

*E. alis cærulescenti-nigris; anticis albo-fasciatis et maculatis, posticis croceo-maculatis.**

Upper wings black, with a slight bluish tinge; a wide band extends across the wing before the middle; it is white with a slight yellowish tint, at the lower edge of the wing it is abruptly narrowed; behind the middle of the wing, and between it and the tip, are from five to six pale yellowish white spots, the four or five outermost the smallest, and one or two of them sometimes obsolete;

* Filia meæ "Marian Frances White," speciem hanc pulchram d. d. descriptor.

between the base and the band a narrow bluish grey line extends across the wing, and behind the band, at an equal distance, there is another short, waved, bluish grey line running down to the inner margin. The margins of the band and spots are bluish grey. The lower wing is narrowly black at the base, with a transverse band of a king's yellow colour; this is the widest on the inner edge, near its outer end there is an angular black spot; the apical half of the wing is black, with numerous king's yellow spots arranged in two lines, two spots about the middle connected and notched with black. Head, thorax, and base of abdomen black, rest of abdomen of a king's yellow colour.

Mr. Macgillivray took two specimens of this fine species. One flew on board when the ship was to the north of Cape Weymouth; the other was taken at Cape York: the figure is of the natural size.

Cocytia Durvillii, Boisd. Monog. des Zygénides, t. 1, fig. 1.

This is an abundant species in the Louisiade Archipelago, flying on shore in the daytime among trees (as D'Urville remarked it did in New Guinea); and it frequently came on board the Rattlesnake, even when distant from the shore two or three miles. It flies heavily like a moth, and is easily caught. This beautiful insect is one of the finest found by Mr. Macgillivray. Only three specimens are recorded: those discovered by Admiral d'Urville, and described by Dr. Boisduval; Mr. M. brought home two, deposited with the rest of his collection in the British Museum.

CRUSTACEA. MALACOSTRACA: DECAPODA.

Ommatocarcinus Macgillivrayi. Tab. v. fig. 1.

Carapace more than twice as wide as long; the sides in front extended into a long slightly bent spine. The frontal portion between the pedicles of the eyes is narrow, much as in *Macrophthalmus*, it slopes down towards the mouth, and is deeply notched at the sides for the reception of the eyes; the fore-edge is doubly notched in the middle, there being a slight tooth between the emarginations. The epistome not so prominent as the lower margin of the orbit; the inner antennæ, with the basal joint, long (the others broken off). The eye-pedicles very long and cylindrical, thickest at the base, slightly bent, somewhat thickened towards the end, so long, that, when bent back, the eye extends a little beyond the end of the spine. Mouth formed nearly as in *Gonoplax*, the third joint of the jaw-feet wider than long. Abdomen seven-jointed, the first joint scarcely visible, shaped much as in *Gonoplax*, but rather wider, the base of the terminal joint longer than the sides. Anterior legs two and a half times as long as the Carapace, measuring it from spine to spine, the arm long and triangular, the upper portion more or less thickly covered with small papillæ, and having a nearly obliterated spine about the middle; the wrist smooth, roundish, with a large blunt tooth on the inside; hands somewhat flattened, widest at the base of the claws, with a broad ridge on the inside, the edge of it rough with small papillæ; the upper edge of hand rough with small papillæ; the claws lap over each other at the tips, and are irregularly toothed on the inside; the fixed claw of the right hand bent at the base, so as to leave a considerable space when the other is closed upon it; upper part of arm, hand, and moveable claw pretty thickly spotted with red, epistome

orbits and greater part of the upper surface of carapace spotted with red, sides and hind part of carapace white; upper edge of the orbit covered with small papillæ; a tolerably prominent ridge extends across the carapace before the middle. Four hind pairs of legs long, slender, compressed, the upper edges of the second and third pairs fringed with hairs, as well as the lower edge of the two terminal joints, the claws long, thin, and somewhat bent.

Hab. Port Curtis. Shoal-water, mud-banks.

This fine Crustacean is allied to *Gonoplax* and *Curtonotus*; and being one of the most prominent species sent home by Mr. Macgillivray, is selected for description here; the figure is of the size of nature.

Porcellanella triloba. Tab. v. fig. 2.

Carapace somewhat flattened, the front produced into three large teeth or lobes; the intermediate the widest and most prominent; the sides of the outer lobes rounded before the eye; carapace longer than wide, widest a little behind the insertion of the antennæ, the upper surface smooth, polished, with some transverse scratched lines, which are slight and irregular, they are most observable in front and on the sides, behind it is somewhat notched in the middle. External antennæ long, longer than twice the breadth of the carapace, inserted in a sinus behind the eye, the basal portion formed of three joints, the first projecting beyond the sides of the carapace, the second wider and longer than the first, third short and thick at the end; the terminal part of antennæ long, thread-like, and formed of very numerous articulations; the eyes large, and with a short pedicel. Anterior legs long and smooth, the pincers overlapping each other at the end, their inner edge rough, scarcely toothed; from before the base of the inside of the moveable claw a thickish line of hairs extends

about half way down the hands, which bulge, and are rounded on the inside, but on the outside are straightish or slightly waved, and rather sharply keeled; the second, third, and fourth pairs of legs are somewhat compressed, and terminate in claws with four longish hooks on the inside; posterior pair of legs folded over the back, narrow, with the second joint somewhat bent upwards.

This curious species was dredged by Mr. Macgillivray off Cape Capricorn, in lat. $23^{\circ} 25'$ S. long. $151^{\circ} 12'$ E., in 15 fathoms, the bottom being muddy sand and shells. It is allied to the species of the second section of the genus *Porcellana*, as detailed by Professor Milne Edwards in the second volume of the "Histoire Naturelle des Crustacés," but has characters sufficient to constitute a new subgenus, to which may be applied the name *Porcellanella*. The figure represents it of twice its natural size.

P. S.—The figures have been carefully drawn from the originals by Mr. William Wing, so well known as a Zoological Draughtsman, and will at once explain my imperfect descriptions.

THE END.