



One, four or 100 genera? A new classification of the cone snails

N. Puillandre¹, T. F. Duda², C. Meyer³, B. M. Olivera⁴ and P. Bouchet⁵

¹*Museum National d'Histoire Naturelle, Département Systematique et Evolution, ISyEB Institut (UMR 7205 CNRS/UPMC/MNHN/EPHE), 43, Rue Cuvier, Paris 75231, France;*

²*Department of Ecology and Evolutionary Biology and Museum of Zoology, University of Michigan, 1109 Geddes Avenue, Ann Arbor, MI 48109, USA;*

³*Department of Invertebrate Zoology, National Museum of Natural History, Smithsonian Institution, Washington, DC 20013, USA;*

⁴*Department of Biology, University of Utah, 257 South 1400 East, Salt Lake City, UT 84112, USA; and*

⁵*Museum National d'Histoire Naturelle, Département Systematique et Evolution, ISyEB Institut (UMR 7205 CNRS/UPMC/MNHN/EPHE), 55, Rue Buffon, Paris 75231, France*

Correspondence: N. Puillandre; e-mail: puillandre@mnhn.fr

(Received 7 August 2013; accepted 6 June 2014)

ABSTRACT

We present a new classification for the genus *Conus sensu lato* (family Conidae), based on molecular phylogenetic analyses of 329 species. This classification departs from both the traditional classification in only one genus and from a recently proposed shell- and radula-based classification scheme that separates members of this group into five families and 115 genera. Roughly 140 genus-group names are available for Recent cone snails. We propose to place all cone snails within a single family (Conidae) containing four genera—*Conus*, *Conasprella*, *Profundiconus* and *Californiconus* (with *Conus* alone encompassing about 85% of known species)—based on the clear separation of cone snails into four distinct and well-supported groups/lineages in molecular phylogenetic analyses. Within *Conus* and *Conasprella*, we recognize 57 and 11 subgenera, respectively, that represent well-supported subgroupings within these genera, which we interpret as evidence of intrageneric distinctiveness. We allocate the 803 Recent species of Conidae listed as valid in the World Register of Marine Species into these four genera and 71 subgenera, with an estimate of the confidence for placement of species in these taxonomic categories based on whether molecular or radula and/or shell data were used in these determinations. Our proposed classification effectively departs from previous schemes by (1) limiting the number of accepted genera, (2) retaining the majority of species within the genus *Conus* and (3) assigning members of these genera to species groups/subgenera to enable the effective communication of these groups, all of which we hope will encourage acceptance of this scheme.

INTRODUCTION

Cone snails are members of a hyperdiverse group of marine gastropods that are well known and appreciated for their history of rapid diversification, their tremendously diverse and complex venoms, and the elegance of their shells. They include such emblematic species as the once mythical 'Glory-of-the-Sea' Cone (*Conus gloriamaris*) and the deadly Geography Cone (*Conus geographus*). From 30 valid species known to Linnaeus, the current accepted number of species stands at 803 (WoRMS, 2014). These live in the tropical and warm temperate seas of the world, from the intertidal to depths of almost 1,000 m. Like most species in the superfamily Conoidea, cones are characterized by the possession of a venom gland and a highly modified radular tooth that they use as a harpoon to inject venom into their prey. Toxins included in these venoms are being studied for the possibilities they offer to understand the mechanisms underlying the evolution of species interactions, ecological diversification and the functioning of the nervous system, and also for potential therapeutic applications.

After more than two centuries of naming and overnaming, the species-level systematics of cones is undergoing a re-appraisal based, among others, on molecular characters, and this is leading to a more stable taxonomy. Conversely, the supraspecific classification of the cone snails has in the last 20 years become more unstable than ever. A plethora of nominal (sub)genera reflect subtle differences in shell form and radular morphology, but these are obscuring phylogenetic relationships between terminal taxa. While toxinologists are longing for a predictive classification that can be used as a roadmap for bioprospecting (Olivera, 2006; Puillandre & Holford, 2010), the two genus-level classifications of cones proposed in the last 25 years (da Motta, 1991; Tucker & Tenorio, 2009, 2013) have remained ignored outside the world of cone-shell collectors.

Whereas the general and characteristic shape of the shell has empirically brought together all cone snails in what for two centuries has been called the family Conidae, the relationships between the species within Conidae, and in particular their eventual classification in genera and subgenera, is still debated.

The first modern divisions of the family Conidae recognized one family, 14 groups “which may even represent subfamilies”, and 29 genera (Cotton, 1945: 231), two subfamilies and eight genera (Walls, 1978) and eight genera and 60 subgenera (da Motta, 1991). These classifications were based solely on shell characters, whereas Tucker & Tenorio’s (2009, 2013) completely novel classification was based on shell as well as radular characters. These authors divided cone snails into five families and 89 genera, while their restricted family Conidae was itself subdivided into four subfamilies. The robustness of this classification is questionable, when radular characters have been found to be a poor phylogenetic marker in other conoidean taxa (Castelin *et al.*, 2012; Kantor & Puillandre, 2012). In fact, cone snails, or *Conus sensu lato*, is in itself a concept with blurred limits. Depending on the authors, some marginal species may or may not be included in cone snails. This is the case of the Cryptoconidae *sensu* Tucker & Tenorio (2009), treated by some authors as cone snails (e.g. Cossmann, 1896), while excluded by others (Tucker & Tenorio, 2009). DNA data indicate that *Genota*, a genus sometimes included in this family, may be more closely related to the family Borsoniidae (Puillandre *et al.*, 2011). Similarly, *Benthofascis* was excluded from the Conidae by Puillandre *et al.* (2011). Consequently, the present study will not consider Cryptoconidae and *Benthofascis* as members of the ingroup, but will focus on the Conidae *sensu* Bouchet *et al.* (2011), i.e. Conidae, Conilithidae and Taranteconidae *sensu* Tucker & Tenorio (2009).

In the last decade, published molecular phylogenies (listed by Puillandre *et al.*, 2014) have suggested that cone snails actually encompass very deep lineages that diverged at least 33 Ma (Duda & Kohn, 2005), the three main ones being the single species *Conus californicus*, sister-group to all the other cones, the ‘Small Major Clade’ of Duda & Kohn (2005) (corresponding to the family Conilithidae of Tucker & Tenorio, 2009) and the ‘Large Major Clade’ of Duda & Kohn, 2005 (corresponding to the family Conidae of Tucker & Tenorio, 2009). Furthermore, Espiritu *et al.* (2001) defined 21 molecular groups within the Large Major Clade. None of these molecular phylogenies was turned into a formal classification of cone snails. However, Bandyopadhyay *et al.* (2008) and a few others after him (e.g. Kraus *et al.*, 2011, 2012) did apply the name *Conasprella* to the Small Major Clade, thus leaving the name *Conus* for the Large Major Clade. Several other generic or subgeneric names have also been used sporadically (e.g. Jimenez, Olivera & Teichert, 2007; Holford *et al.*, 2009; Puillandre, Watkins & Olivera, 2010). Meanwhile, new names have continued to be established to this day, with no less than 127 genus-group names available to classify cones.

Puillandre *et al.* (2014) recently published a phylogeny of the cone snails based on 330 species and sequences of three mitochondrial gene regions. In the present paper we utilized this molecular phylogeny as a foundation to establish a new genus- and subgenus-level classification of the Conidae, with four genera (*Californiconus*, *Profundiconus*, *Conasprella* and *Conus*) and 71 subgenera (Fig. 1). We also tentatively allocate all cone snail species currently considered as valid in WoRMS, but not represented in the molecular phylogeny, to genera and subgenera based on their morphological characters.

MATERIAL AND METHODS

Turning the phylogeny into a classification

Proposing a classification based on a phylogeny mainly consists of (1) identifying the groups that will be named; (2) attributing available names and, if necessary, establishing new ones, for the groups identified in (1); and (3) ranking these names.

Identifying groups to be named

As far as possible, only well supported (bootstrap probability >90%; Bayesian posterior probability >0.95) clades (and single-species lineages) were linked to names. When several alternatives were possible (e.g. one supported clade that includes two supported clades, both with available names attributable to them), other characters and properties, such as shell morphology, type of prey, bathymetric and/or geographical distribution, were considered in order to identify the most appropriate grouping to minimize within-group variability. Overall, a conservative approach was adopted, to minimize the number of supraspecific taxa, both named and unnamed. In two cases (*Pyruconus* and *Cylinder*) we attributed a name to a group we recognized to be non-monophyletic (although this non-monophyly is not supported), in order to avoid having to establish new names for many small clades. Such polyphyletic, but morphologically consistent, genera may correspond to grades and in future each of the included clades may be shown to deserve its own name.

Naming of groups

As far as possible, a genus-group name (i.e. a genus or subgenus) was applied based on the position of its type species in the tree. If the type species of a nominal genus or subgenus had not been sequenced, application of the name was determined by reference to the morphologically most similar species used in the molecular analysis. If more than one name was applicable for a clade, the valid name was determined by the rule of priority. In the classification below, OD refers to the fixation of type species by original designation, SD by subsequent designation and M by monotypy (as defined by ICZN, 1999: Art. 68, 69, respectively).

Ranking of groups

Tucker & Tenorio (2009, 2013) attributed family-rank names to the main lineages identified by molecular phylogenies (i.e. the Small and Large Major Clades) and genus-rank names to groups of species that roughly correspond to the same level of resolution as the 21 groups defined by Espiritu *et al.* (2001). However, contrary to the first two steps of the process, which are based on objective criteria (e.g. monophyly of the taxa) and nomenclatural rules (e.g. position of type species), the attribution of ranks to the named clades is subjective. Taxonomists generally place two species in two different genera or two different families (or any other rank) based on a certain level of divergence, but the threshold of divergence at which a given rank is recognized varies greatly depending on the taxa, the characters involved and who is making the classification (Avisé & Liu, 2011). Even for a given taxon and character (e.g. a nucleotide sequence), it is difficult to provide an objective criterion, since ranks above the species level are not defined by any biological attribute or property that could define a threshold. (For the rank of species, on the other hand, objective criteria for delimitation have been proposed, as amply developed in the literature on integrative taxonomy, e.g. De Queiroz, 1998; Samadi & Barberousse, 2006.) Accepting that ranking is to a large extent a matter of opinion, we also took into consideration prevailing usage. In the vast literature dealing with conotoxins, ranking has been very conservative, with Conidae being the only accepted family-level taxon. We have also been guided by dated molecular phylogenies of other marine gastropod clades. For example, the mean age of the most recent common ancestors of each monophyletic genus of Muricidae (Neogastropoda) is about 20 Ma, with a minimum of 9.5 Ma and a maximum of 42.2 Ma, and the age of the subfamily Rapaninae is estimated at about 61 Ma (Claremont *et al.*, 2013: fig. 2). The most recent common ancestors of the bursids *Tutufa* and *Bursa* (Littorinimorpha: Tonnoidea) are

CLASSIFICATION OF CONE SNAILS

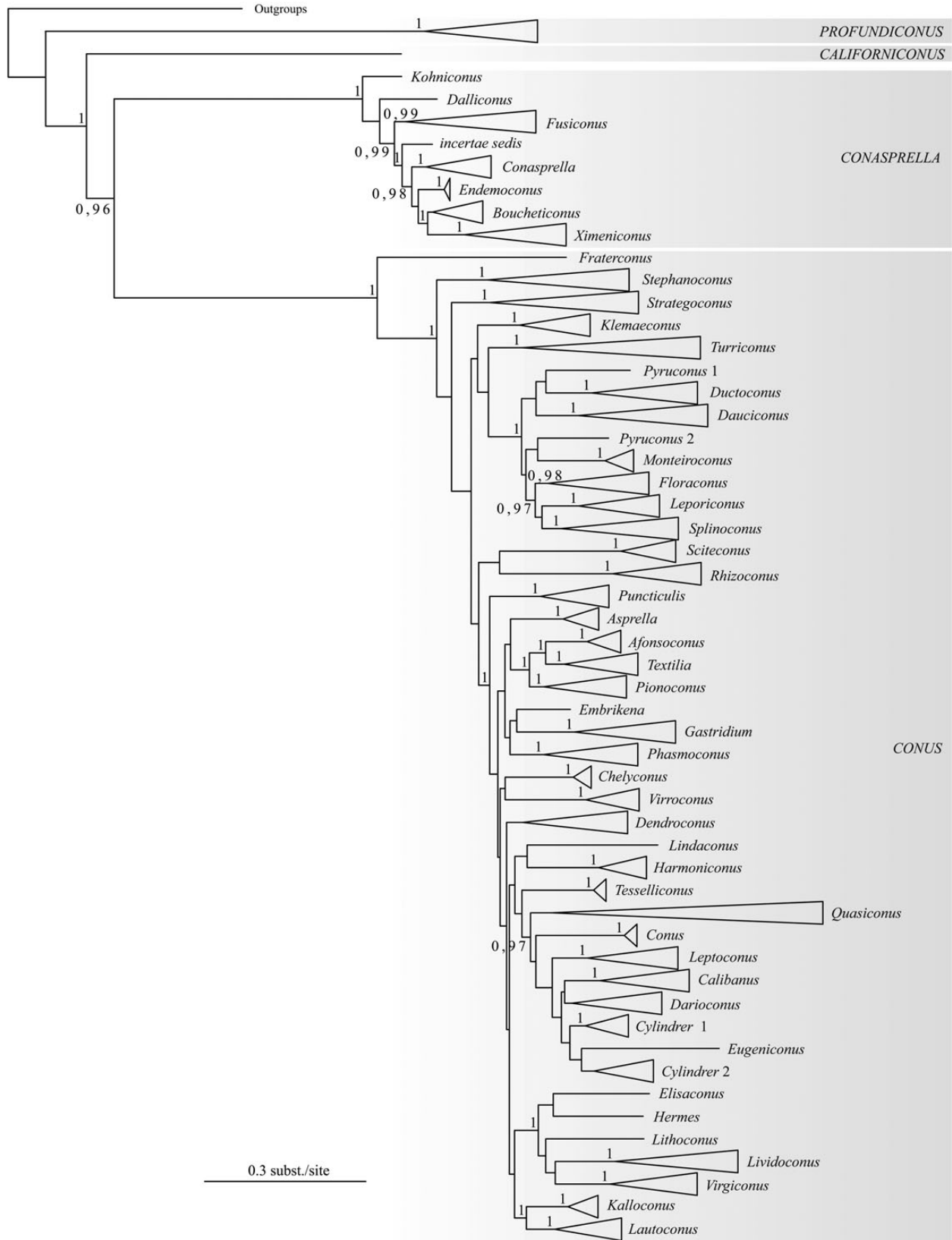


Figure 1. Simplified version of the Bayesian tree based on the concatenation of sequences of three mitochondrial gene regions (COI, 16S, 12S) and published by Puillandre *et al.* (2014: fig. 2) showing the proposed classification. Genera and subgenera with multiple species are reduced to triangles, whose lengths are proportional to the branch lengths. Posterior probabilities (>0.95) are shown for each node. Only (sub)genera with at least one sequenced representative are figured.

estimated to be about 26 and 35 Ma, respectively (Castelin *et al.*, 2012: fig. 7). The ages of the genera *Littoraria* and *Echinolittorina* (Littorinimorpha: Littorinidae) and of *Turbo* (Vetigastropoda: Turbinidae) are estimated to be respectively 55 Ma (Reid, Dyal & Williams, 2012), 50 Ma (Reid *et al.*, 2012) and 60–117 Ma (Williams, 2007; Williams & Duda, 2008), respectively. To place these numbers in perspective, the oldest fossils attributed with certainty to cone snails are 55 Ma (Duda & Kohn, 2005), the minimum age for the divergence between the two main clades of cones is estimated to be 33 Ma (Duda & Kohn, 2005) and the species diversification within each of these two main clades is supposed to have started between 15 and 20 Ma (Duda & Palumbi, 1999). The main lineages within cone snails are thus roughly of the same age, or even younger, than the genera as defined in other groups of caenogastropods. In an attempt to assign ranks that are roughly comparable with those used for other gastropod taxa in terms of group age, we chose to rank the main lineages of cone snails at the level of genus. With this approach, all cone snails are placed in a single family (Conidae) and most (Large Major Clade) remain in the genus *Conus* (consistent with prevailing usage of this name). As stated above, based on the molecular clock calibrations of Duda & Kohn (2005), the lineages that ultimately gave rise to these genera presumably separated from each other at least 33 Ma. We further identified well-supported groupings within these genera and assigned the members of these groups to subgenera. Except for the difference in assigned rank, these subgenera are essentially comparable with the generic-level groups proposed by Tucker & Tenorio (2009, 2013).

Allocation of species to genus-level groups

All the 803 species of Conidae listed as valid in WoRMS (2014) were allocated to genera and subgenera, with two levels of confidence. Those printed in bold font were placed in the classification based on the DNA sequences of Puillandre *et al.* (2014). The others were classified based on their shell and/or radula characters, following Tucker & Tenorio (2013) and, for species not included or considered as synonyms by Tucker & Tenorio (2013), following Petuch (2013) or the advice of M. Tenorio (personal communication).

Species sometimes referred to as ‘cone snails’ but allocated to *Artemidiconus* (Conorbidae; Tucker & Tenorio, 2009; Bouchet *et al.*, 2011), *Benthofascis* (Conorbidae; Tucker & Tenorio, 2009; Bouchet *et al.*, 2011), *Genota* (Cryptoconidae in Tucker & Tenorio, 2009; or Borsoniidae in Bouchet *et al.*, 2011) and *Genotina* (Cryptoconidae in Tucker & Tenorio, 2009; or Mangeliidae in Bouchet *et al.*, 2011) were excluded. Within Conorbidae, only *Benthofascis lozoueti* has been sequenced and molecular analysis indicates that the family is separate from Conidae (Puillandre *et al.*, 2011). However, *B. lozoueti* is the only conorbid species that does not resorb the inner shell walls (Tucker, Tenorio & Stahlschmidt, 2011). It thus cannot be excluded that the other Conorbidae species—which resorb them—may in fact not be conofamilial. Likewise, as indicated above, molecular data place *Genota* in the Borsoniidae (Puillandre *et al.*, 2011) and this clade is not further discussed here. Fossil taxa (*Hemiconus* Cossmann, 1889; *Cryptoconus* Koenen, 1867; *Conorbis* Swainson, 1840; *Conilithes* Swainson, 1840; *Eoconus* Tucker & Tenorio, 2009 and *Plagioconus* Tucker & Tenorio, 2009) are not discussed either. Consequently, only the Conidae, Conilithidae and Taranteconidae (sensu Tucker & Tenorio, 2009) are discussed below, i.e. the cone snails as defined by Bouchet *et al.* (2011).

The classification is summarized as a list of the valid Recent species with their genus-level assignment (Appendix Table 1) and as a list of nominal genus-group names with their current status (Appendix Table 2).

SYSTEMATICS

Superfamily CONOIDEA Fleming, 1822

Family Conidae Fleming, 1822

[Synonyms: Conilithidae Tucker & Tenorio, 2009, n. syn. Taranteconidae Tucker & Tenorio, 2009, n. syn. Puncticuliinae Tucker & Tenorio, 2009, n. syn.]

Genus *Californiconus* Tucker & Tenorio, 2009

Type species: Conus californicus Reeve, 1844; OD

Included species:

californicus (Reeve, 1844)

Remarks: *Conus californicus* has always been considered a unique species within cone snails, because of its molecular (including toxicological: Biggs *et al.*, 2010; Elliger *et al.*, 2011) and morphological singularities and also because of its diet, since it is able to prey indifferently on fish, molluscs and worms (Kohn, 1966).

Genus *Profundiconus* Kuroda, 1956

Type species: Chelyconus profundorum Kuroda, 1956; OD

[Synonym: *Lizaconus* da Motta, 1991; type species: ***Asprella teramachii*** Kuroda, 1956; OD]

Included species:

<i>cakobau</i> (Moolenbeek, Röckel & Bouchet, 2008)	<i>pacificus</i> (Moolenbeek & Röckel, 1996) n. comb.
<i>dondani</i> (Kosuge, 1981) n. comb.	<i>profundorum</i> (Kuroda, 1956)
<i>emersoni</i> (G. D. Hanna, 1963)	<i>scopulicola</i> (Okutani, 1972)
<i>fraussen</i> (Tenorio & Poppe, 2004)	<i>smirna</i> (Bartsch & Rehder, 1943)
<i>ikedai</i> (Ninomiya, 1987)	<i>stahlschmidti</i> (Tenorio & Tucker, 2014)
<i>jeanmartini</i> (G. Raybaudi Massilia, 1992)	<i>teramachii</i> (Kuroda, 1956)
<i>kanakinus</i> (Richard, 1983) n. comb.	<i>tuberculosis</i> (Tomlin, 1937) n. comb.
<i>lani</i> (Crandall, 1979)	<i>vaubani</i> (Röckel, Richard & Moolenbeek, 1995)
<i>loyaltiensis</i> (Röckel & Moolenbeek, 1995)	

Remarks: Puillandre *et al.* (2014) did not sequence the type species of *Profundiconus*; their sequenced material was identified as *P. aff. profundorum*. However, Tucker & Tenorio (2009, 2013) found *Profundiconus* to be a morphologically well supported group and we are thus confident in applying this name to the clade containing *P. aff. profundorum*.

Genus *Conasprella* Thiele, 1929

Subgenus *Conasprella* Thiele, 1929

Type species: Conus pagoda Kiener, 1847; SD, Tucker & Tenorio (2009: 140) (under ICZN, 1999: Art. 70.3.2).

[Synonym: *Duodenticonus* Tucker & Tenorio 2013; type species: ***Asprella memiae*** Habe & Kosuge, 1970; OD; n. syn.]

Included species:

<i>aphrodite</i> (Petuch, 1979)	<i>boholensis</i> (Petuch, 1979)
<i>articulata</i> (G.B. Sowerby II, 1873)	n. comb.
<i>baileyi</i> (Röckel & da Motta, 1979)	<i>boucheti</i> (Richard, 1983)
	n. comb.
	<i>bozzettii</i> (Lauer, 1991)

eucoronata (G.B. Sowerby III, 1903) **memiae** (Habe & Kosuge, 1970) n. comb.
eugrammata (Bartsch & Rehder, 1943) **otohimeae** (Kuroda & Itô, 1961) n. comb.
gordyi (Röckel & Bondarev, 2000) **pagoda** (Kiener, 1847)
lorenzi Monnier & Limpalaër, 2012 **wakayamaensis** (Kuroda, 1956)

Subgenus Boucheticonus Tucker & Tenorio, 2013

Type species: **Conus alisi** Moolenbeek, Röckel & Richard, 1995; OD

Included species:

alisi (Moolenbeek, Röckel & Richard, 1995) n. comb. **pseudokimioi** da Motta & Martin, 1982 n. comb.
kimioi (Habe, 1965) n. comb.

Remarks: The species *C. kimioi* was placed in the subgenus *Boucheticonus* (following Tucker & Tenorio 2013), even if the corresponding clade was not highly supported.

Subgenus Coltroconus Petuch, 2013

Type species: **Conus iansa** Petuch, 1979; OD

Included species:

henriquei (Petuch & R. F. Myers, 2014) n. comb. **iansa** (Petuch, 1979) n. comb.

Subgenus Dalliconus Tucker & Tenorio, 2009

Type species: **Conus mcgintyi** Pilsbry, 1955; OD

Included species:

armiger (Crosse, 1858) n. comb. **mcgintyi** (Pilsbry, 1955) n. comb.
bajanensis (Nowell-Usticke, 1968) n. comb. **pacei** (Petuch, 1987) n. comb.
guyanensis (van Mol, 1973) n. comb. **rainsae** (McGinty, 1953) n. comb.
lenhilli (Cargile, 1998) n. comb. **roberti** (Richard, 2009) n. comb.
mazei (Deshayes, 1874) n. comb. **sauros** (Garcia, 2006) n. comb.

Subgenus Endemoconus Iredale, 1931

Type species: **Conus howelli** Iredale, 1929; OD

[Synonyms: *Kermasprella* Powell, 1958; type species: *Conus raoulensis* Powell, 1958; OD. *Yeddoconus* Tucker & Tenorio, 2009; type species: **Conus sieboldii** Reeve, 1848; OD]

Included species:

grohi (Tenorio & Poppe, 2004) n. comb. **sieboldii** (Reeve, 1848) n. comb.
howelli (Iredale, 1929) n. comb. **somalica** (Bozzetti, 2013) n. comb.
ione (Fulton, 1938) n. comb. **spirofilis** (Habe & Kosuge, 1970) n. comb.
raoulensis (Powell, 1958) n. comb.

Subgenus Fusiconus da Motta, 1991

Type species: **Conus longurionis** Kiener, 18547; OD

[Synonyms: *Bathyconus* Tucker & Tenorio, 2009; type species: **Conus orbignyi** Audouin, 1831; OD; n. syn. *Fumiconus* da Motta, 1991; type species: *Conus traversianus* E.A. Smith, 1875, OD; n. syn. *Viminiconus* Tucker & Tenorio, 2009; type species: **Conus vimineus** Reeve, 1849; OD; n. syn.]

Included species:

aculeiformis (Reeve, 1844) n. comb. **joliveti** (Moolenbeek, Röckel & Bouchet, 2008) n. comb.
comatosa (Pilsbry, 1904) n. comb. **coriolisi** (Röckel, Richard & Moolenbeek, 1995) n. comb.
dictator (Melvill, 1898) n. comb. **lizarum** (Raybaudi Massilia & da Motta, 1992) n. comb.
dieteri (Moolenbeek, Zandbergen & Bouchet, 2008) n. comb. **longurionis** (Kiener, 1847) n. comb.
elegans (G. B. Sowerby III, 1895) n. comb. **orbignyi** (Audouin, 1831) n. comb.
elokismenos (Kilburn, 1975) n. comb. **pepeiu** (Moolenbeek, Zandbergen & Bouchet, 2008) n. comb.
fijiensis (Moolenbeek, Röckel & Bouchet, 2008) n. comb. **pseudorbignyi** (Röckel & Lan, 1981) n. comb.
guidopopei (G. Raybaudi Massilia, 2005) n. comb. **saecularis** (Melvill, 1898) n. comb.
hypochlorus (Tomlin, 1937) n. comb. **stocki** (Coomans & Moolenbeek, 1990) n. comb.
hopwoodi (Tomlin, 1937) n. comb. **tiki** (Moolenbeek, Zandbergen & Bouchet, 2008) n. comb.
ichinoseana (Kuroda, 1956) n. comb. **traversiana** (E. A. Smith, 1875) n. comb.
insculpta (Kiener, 1847) n. comb. **viminea** (Reeve, 1849) n. comb.
lentiginosa (Reeve, 1844) n. comb.

Subgenus Kohniconus Tucker & Tenorio, 2009

Type species: **Conus emarginatus** Reeve, 1844; OD

Included species:

arcuata (Broderip & G. B. Sowerby I, 1829) n. comb. **janowskyae** (Tucker & Tenorio, 2011) n. comb.
centurio (Born, 1778) n. comb. **kohni** (McLean & Nybakken, 1979) n. comb.
emarginata (Reeve, 1844) n. comb. **rachelae** (Petuch, 1988) n. comb.
fenzani (Petuch & Sargent, 2011) n. comb. **scaripha** (Dall, 1910) n. comb.

Remarks: Tucker & Tenorio (2009) included both *Conasprella delesserti* and *Conasprella arcuata* in *Kohniconus*. In our analysis, the two species do not cluster together. The name *Kohniconus* could have been applied to the lineage that includes the species *C. delesserti*, but because of the closer morphological resemblance of *Conus emarginatus* with *C. arcuata*, we have applied *Kohniconus* to the lineage that includes *C. arcuata*.

Subgenus Lilliconus G. Raybaudi Massilia, 1994

Type species: **Conus biraghii** G. Raybaudi Massilia, 1992; OD

Included species:

biraghii (G. Raybaudi Massilia, 1992) n. comb. **sagei** (Korn & G. Raybaudi Massilia, 1993) n. comb.

Subgenus Parviconus Cotton & Godfrey, 1932

Type species: **Conus rutilus** Menke, 1843; OD

Included species:

rutila (Menke, 1843) n. comb.

Subgenus Pseudoconorbis Tucker & Tenorio, 2009

Type species: **Conorbis coromandelicus** E. A. Smith, 1894; OD

Included species:

coromandelica (E. A. Smith, 1894) n. comb. **traceyi** (Tucker & Stahlschmidt, 2010) n. comb.

Subgenus *Ximeniconus* Emerson & Old, 1962

Type species: Conus ximenes Gray, 1839; OD

[Synonyms: *Globiconus* Tucker & Tenorio, 2009; type species: ***Conus tornatus*** G.B. Sowerby I, 1833; OD; n. syn. *Jaspidiconus* Petuch, 2003; type species: ***Conus jaspideus*** Gmelin, 1791; OD; n. syn. *Perplexiconus* Tucker & Tenorio, 2009; type species: ***Conus perplexus*** G. B. Sowerby II, 1857; OD; n. syn.]

Included species:

<i>alexandremonteiroi</i> (Cossignani, 2014) n. comb.	<i>ogum</i> (Petuch & R. F. Myers, 2014) n. comb.
<i>allamandi</i> (Petuch, 2013) n. comb.	<i>perplexa</i> (G. B. Sowerby II, 1857) n. comb.
<i>anaglyptica</i> (Crosse, 1865) n. comb.	<i>pfluegeri</i> (Petuch, 2003) n. comb.
<i>arawak</i> (Petuch & R. F. Myers, 2014) n. comb.	<i>poremskii</i> (Petuch & R. F. Myers, 2014) n. comb.
<i>baccata</i> (G. B. Sowerby III, 1877) n. comb.	<i>puncticulata</i> (Hwass in Bruguière, 1792) n. comb.
<i>berschaueri</i> (Petuch & R. F. Myers, 2014) n. comb.	<i>pusio</i> (Hwass in Bruguière, 1792) n. comb.
<i>damasoi</i> (Cossignani, 2007) n. comb.	<i>roatanensis</i> (Petuch & Sargent, 2011) n. comb.
<i>ericomnieri</i> (Petuch & R. F. Myers, 2014) n. comb.	<i>sargenti</i> (Petuch, 2013) n. comb.
<i>fluviamaris</i> (Petuch & Sargent, 2011) n. comb.	<i>simonei</i> (Petuch & R. F. Myers, 2014) n. comb.
<i>henckesi</i> (Coltro, 2004) n. comb.	<i>stearnsii</i> (Conrad, 1869) n. comb.
<i>herndli</i> (Petuch & R. F. Myers, 2014) n. comb.	<i>tornata</i> (G. B. Sowerby I, 1833) n. comb.
<i>jaspidea</i> (Gmelin, 1791) n. comb.	<i>vanhyningi</i> (Rehder, 1944) n. comb.
<i>lucidus</i> (W. Wood, 1828) n. comb.	<i>wendrosi</i> (Tenorio & Afonso, 2013) n. comb.
<i>mahogani</i> (Reeve, 1843) n. comb.	<i>ximenes</i> (Gray, 1839) n. comb.
<i>mindana</i> (Hwass in Bruguière, 1792) n. comb.	

Incertae sedis

Conasprella delessertii (Récluz, 1843) n. comb.

Genus *Conus* Linnaeus, 1758

Subgenus *Conus* Linnaeus, 1758

Type species: Conus marmoreus Linnaeus, 1758; SD, Children (1823: 69)

[Synonyms: *Cucullus* Röding, 1798; type species: ***Conus marmoreus*** Linnaeus, 1758; SD, Winckworth (1945: 139). *Coronaxis* Swainson, 1840; type species: ***Conus bandanus*** Hwass, 1792; M]

Included species:

<i>araneosus</i> [Lightfoot], 1786	<i>marmoreus</i> Linnaeus, 1758
<i>bandanus</i> Hwass in Bruguière, 1792	<i>nocturnus</i> [Lightfoot], 1786
	<i>vidua</i> Reeve, 1843

Subgenus *Afonsoconus* Tucker & Tenorio, 2013

Type species: Conus kinoshitai Kuroda, 1956; OD

Included species:

<i>bruuni</i> Powell, 1958	<i>kinoshitai</i> Kuroda, 1956
-----------------------------------	---------------------------------------

Subgenus *Asprella* Schaufuss, 1869

Type species: Conus asper Lamarck, 1810, by typification of replaced name. *Asprella* was established as a substitute name for *Cylindrella* Swainson, 1840 (see below). *Conus asper* was not among the 11 species included in *Asprella* by Schaufuss (1869: 43–44), and Wenz (1940) cited *Conus sulcatus* Bruguière, 1792 (a species originally included by Schaufuss) as the type species; *Conus sulcatus* and *C. asper* are subjective synonyms.

[Synonyms: *Cylindrella* Swainson, 1840; type species: *Conus asper* Lamarck, 1810; subjective synonym of ***Conus sulcatus*** Hwass, 1792; M. *Cylindrella* Swainson, 1840 (Conidae), is a homonym of *Cylindrella* Swainson, 1840 (Urocoptidae) and has been placed on the Official Index of Rejected and Invalid Names by ICZN, 1999: Opinion 1030. *Sulciconus* Bielz, 1869; type species (here designated): ***Conus sulcatus*** Hwass in Bruguière, 1792, n. syn. The names *Asprella* and *Sulciconus* were both published in 1869 and their exact dates of publication are not known in order to establish priority. Under ICZN (1999): Art. 24.2, we act here as First Revisers and give precedence to the name *Asprella* over *Sulciconus*.]

Included species:

<i>fjissulcatus</i> Moolenbeek, Röckel & Bouchet, 2008	<i>helgae</i> Blöcher, 1992
<i>gigasulcatus</i> Moolenbeek, Röckel & Bouchet, 2008	<i>iodostoma</i> Reeve, 1843
<i>grangeri</i> G. B. Sowerby III, 1900	<i>rolani</i> Röckel, 1986
	<i>sulcatus</i> Hwass in Bruguière, 1792
	<i>sulcocastaneus</i> Kosuge, 1981

Subgenus *Atlanticonus* Petuch & Sargent, 2012

Type species: Conus granulatus Linnaeus, 1758; OD

Included species:

<i>cuna</i> Petuch, 1998	<i>granulatus</i> Linnaeus, 1758
<i>glenni</i> Petuch, 1993	<i>ritae</i> Petuch, 1995

Subgenus *Attenuiconus* Petuch, 2013

Type species: Conus attenuatus Reeve, 1844; OD

Included species:

<i>attenuatus</i> Reeve, 1844	<i>honkeri</i> Petuch, 1988
<i>aureonimbosus</i> Petuch, 1987	<i>poulosi</i> Petuch, 1993
<i>eversoni</i> Petuch, 1987	

Subgenus *Austroconus* Tucker & Tenorio, 2009

Type species: Conus cyanostoma A. Adams, 1855; OD

[Possible senior synonym: *Mamiconus* Cotton & Godfrey, 1932; type species: *Conus superstes* Hedley, 1911; OD. The identity of *C. superstes* is uncertain; it is listed as a nomen dubium by Tucker & Tenorio (2013)]

Included species:

<i>clarus</i> E. A. Smith, 1881	<i>sydneyensis</i> G. B. Sowerby III, 1887
<i>cyanostoma</i> A. Adams, 1855	

Subgenus *Bermudaconus* Petuch, 2013

Type species: Conus lightbourni Petuch, 1986; OD

Included species:

<i>lightbourni</i> Petuch, 1986

Subgenus *Brasiliconus* Petuch, 2013

Type species: *Conus scopulorum* Van Mol, Tursch & Kempf, 1971; OD

Included species:

scopulorum Van Mol, Tursch & Kempf, 1971

Subgenus *Calibanus* da Motta, 1991

Type species: *Conus furtvus* Reeve, 1843; OD

[Synonym: *Thalassiconus* Tucker & Tenorio, 2013; type species: *Conus thalassiarchus* G.B. Sowerby I, 1834, n. syn.; OD]

Included species:

furtvus Reeve, 1843 *thalassiarchus*
G. B. Sowerby I, 1834

Subgenus *Chelyconus* Mörch, 1852

Type species: *Conus testudinarius* Hwass, 1792 [synonym of *Conus ermineus* Born, 1778]; SD, Cossmann (1896: 160)

Included species:

ermineus Born, 1778 *purpurascens* G. B. Sowerby
I, 1833

Subgenus *Cylinder* Montfort, 1810

Type species: *Conus textile* Linnaeus, 1758; OD. Dubois & Bour (2010) revived the name *Cylindrus* as from Batsch, 1789 and designated *Conus textile* as its type species. This has the consequence of destabilizing the pulmonate genus name *Cylindrus* Fitzinger, 1833, which is in current use. The ICZN will be petitioned to maintain usage of *Cylinder* Montfort, 1810, and *Cylindrus* Fitzinger, 1833, in their accustomed sense.]

Included species:

abbas Hwass in Bruguière, 1792 *legatus* Lamarck, 1810
ammiralis Linnaeus, 1758 *nodulosus* G. B. Sowerby II,
1864
aureus Hwass in Bruguière, *priscas* (Bozzetti, 2012)
1792 n. comb.
barbieri G. Raybaudi Massilia, *retifer* Menke, 1829
1995 *scottjordani* (Poppe, Monnier &
bengalensis (Okutani, 1968) Tagaro, 2012) n. comb.
canonicus Hwass in *tagaraoe* (Limpalaër &
Bruguière, 1792 Monnier, 2013) n. comb.
dalli Stearns, 1873 *telatus* Reeve, 1848
gloriamaris Chemnitz, 1777 *textile* Linnaeus, 1758
glorioceanus Poppe & Tagaro, *victoriae* Reeve, 1843
2009

Remarks: Tucker & Tenorio (2009) described two 'body plans' in their genus *Cylinder*, citing *Conus textile* and *C. gloriamaris* as examples of each group; they may correspond to the two groups found in the molecular phylogeny. Tucker & Tenorio (2009) relied on their similar radulae and diets to maintain them in a single genus: we have followed them and place all the species in a single subgenus. Among the sequenced species, *C. ammiralis*, *C. canonicus* and *C. dalli* cluster with the type species *C. textile*; the other species constitute a separate clade.

Subgenus *Darioconus* Iredale, 1930

Type species: *Conus omaria* Hwass, 1792; OD

[Synonyms: *Regiconus* Iredale, 1930; type species: *Conus aulicus* Linnaeus, 1758; OD; the simultaneously published *Darioconus* was given precedence over *Regiconus* by First Reviser Kira (1954: 75). *Erythroconus* da Motta, 1991; type species: *Conus crocatus* Lamarck, 1810; OD]

Included species:

aulicus Linnaeus, 1758 *levitani* (Tucker, Tenorio &
auratinus da Motta, 1982 Chaney, 2011) n. comb.
auricomus Hwass in *lohri* Kilburn, 1972
Bruguière, 1792 *madagascariensis* G. B. Sowerby
behelokensis Lauer, 1989 II, 1858
biancae Bozzetti, 2010 *magnificus* Reeve, 1843
crocatus Lamarck, 1810 *natalawantius* (S. G. Veldsman,
echo Lauer, 1989 2013) n. comb.
episcopatus da Motta, 1982 *omaria* Hwass in Bruguière,
lamberti Souverbie, 1877 1792
laueri (Monnier & Limpalaër, *pennaceus* Born, 1778
2013) n. comb. *thomae* Gmelin, 1791

Remarks: The species *C. thomae* was placed in the subgenus *Darioconus* (following Tucker & Tenorio 2013), even though the corresponding clade was not highly supported.

Subgenus *Dauciconus* Cotton, 1945

Type species: *Conus daucus* Hwass, 1792; OD

[Synonyms: *Gradiconus* da Motta, 1991; type species: *Conus gradatus* W. Wood, 1828; OD; n. syn.; *Magelliconus* da Motta, 1991; type species: *Conus magellanicus* Hwass in Bruguière, 1792; OD; n. syn.; *Purpuriconus* da Motta, 1991; type species: *Conus cardinalis* Hwass in Bruguière, 1792; OD; n. syn.; *Cariboconus* Petuch, 2003; type species: *Conus amphirgus* Dall, 1889; OD; *Conasprelloides* Tucker & Tenorio, 2009; type species: *Conus cancellatus* Hwass in Bruguière, 1792; OD; n. syn.; *Poremskiconus* Petuch, 2013; type species: *Conus ziczac* Mühlfeld, 1816; OD; n. syn.; *Tuckericonus* Petuch 2013; type species: *Conus flavescens* G. B. Sowerby I, 1834; OD; n. syn.]

Included species:

abrothosensis Petuch, 1987 *flavescens* G. B. Sowerby I,
alainallaryi Bozzetti & 1834
Monnier, 2009 *garciai* da Motta, 1982
amphirgus Dall, 1889 *gibbonsmithorum* Petuch, 1986
anabathrum Crosse, 1865 *glicksteini* Petuch, 1987
arangoi Sarasúa, 1977 *goajira* Petuch, 1992
aureopunctatus Petuch, 1987 *gradatus* W. Wood, 1828
bayeri Petuch, 1987 *harasewoyichi* Petuch, 1987
belizeanus (Petuch & Sargent, *havanensis* Aguayo & Pérez
2011) n. comb. Farfante, 1947
bessei Petuch, 1992 *hennequimi* Petuch, 1993
boui da Motta, 1988 *hilli* Petuch, 1990
brunneobandatus Petuch, 1992 *honkerorum* (Petuch &
brunneofilaris Petuch, 1990 R. F. Myers, 2014) n. comb.
burryae Clench, 1942 *inconstans* E. A. Smith, 1877
dianthus G. B. Sowerby III, *jacarusoi* Petuch, 1998
1882 *jorioi* (Petuch, 2013) n. comb.
dispar G. B. Sowerby I, 1833 *jucundus* G. B. Sowerby III,
donnae Petuch, 1998 1887
edwardpauli Petuch, 1998 *kaiserae* (Tenorio, Tucker &
eleutheraensis (Petuch, 2013) Chaney, 2012) n. comb.
n. comb. *kalafuti* da Motta, 1987
ernesti Petuch, 1990 *kerstitchi* Walls, 1978
explorator Vink, 1990 *kevani* Petuch, 1987
flamingo Petuch, 1980 *kirkandersi* Petuch, 1987
flammeicolor Petuch, 1992 *kremerorum* Petuch, 1988
 kulkulcanis Petuch, 1980

largilliertii Kiener, 1847
leekremeri Petuch, 1987
levistimpsoni (Tucker, 2013)
 n. comb.
lucaya Petuch, 2000
maculiferus G. B. Sowerby I,
 1833
magellanicus Hwass in
 Bruguière, 1792
magnottei Petuch, 1987
maya (Petuch & Sargent, 2011)
 n. comb.
monilifer Broderip, 1833
cancelatus Hwass in
 Bruguière, 1792
cardinalis Hwass in Bruguière,
 1792
cargilei Coltro, 2004
castaneus Kiener, 1848
caysalensis L. Raybaudi &
 Prati, 1994
ceruttii Cargile, 1997
cingulatus Lamarck, 1810
colombi (Monnier &
 Limpalaër, 2012) n. comb.
colombianus Petuch, 1987
coltrorum (Petuch &
 R. F. Myers, 2014) n. comb.
daucus Hwass in Bruguière,
 1792
deynzerorum Petuch, 1995
nybakkeni (Tenorio, Tucker &
 Chaney, 2012) n. comb.
orion Broderip, 1833
ortneri Petuch, 1998
ostrinus (Tucker & Tenorio,
 2011) n. comb.
paraguana Petuch, 1987
parascalaris Petuch, 1987
paschalli Petuch, 1998

Subgenus *Dendroconus* Swainson, 1840

Type species: ***Conus betulinus*** Linnaeus, 1758; SD,
 Hermannsen (1847: 177)

[Synonym: *Cleobula* Iredale, 1930; type species: ***Conus figulinus***
 Linnaeus, 1758; OD]

Included species:

betulinus Linnaeus, 1758
buxeus (Röding, 1798)
figulinus Linnaeus, 1758
glaucus Linnaeus, 1758

Remarks: The species *C. medoci* was placed in the subgenus
Dendroconus (following Tucker and Tenorio 2013), even if the
 corresponding clade was not highly supported

Subgenus *Ductoconus* da Motta, 1991

Type species: ***Conus princeps*** Linnaeus, 1758; OD

[Synonym: *Arubaconus* Petuch, 2013; type species: ***Conus hiero-***
glyphus Duclos, 1833; OD; n. syn.]

Included species:

hieroglyphus Duclos, 1833 ***princeps*** Linnaeus, 1758

patglicksteinae Petuch, 1987
paulae Petuch, 1988
penchaszadehi Petuch, 1986
philippii Kiener, 1847
poormani Berry, 1968
portobeloensis Petuch, 1990
pseudocardinalis Coltro, 2004
recurvus Broderip, 1833
regularis G. B. Sowerby I, 1833
richardbinghami Petuch, 1993
rosalindensis Petuch, 1998
rosemaryae Petuch, 1990
sahlbergi da Motta & Harland,
 1986
scalaris Valenciennes, 1832
scalarissimus da Motta, 1988
sennottorum Rehder & Abbott,
 1951
shaskyi (Tenorio, Tucker &
 Chaney, 2012) n. comb.
skoglundae (Tenorio, Tucker &
 Chaney, 2012) n. comb.
sphacelatus G. B. Sowerby I,
 1833
stanfieldi Petuch, 1998
stimpsoni Dall, 1902
sunderlandi Petuch, 1987
theodori Petuch, 2000
tristensis Petuch, 1987
velaensis Petuch, 1993
venezuelanus Petuch, 1987
vikingorum Petuch, 1993
villepini P. Fischer &
 Bernardi, 1857
virgatus Reeve, 1849
vittatus Hwass in Bruguière,
 1792
xanthicus Dall, 1910
ziczac Mühlfeld, 1816
zylmanae Petuch, 1998

Subgenus *Elisaconus* Tucker & Tenorio, 2013

Type species: ***Conus litteratus*** Linnaeus, 1758; OD

Included species:

litteratus Linnaeus, 1758

Subgenus *Embrikenia* Iredale, 1937

Type species: ***Embrikenia pergrandis*** Iredale, 1937; M

Included species:

darkini Röckel, Korn & *moncuri* Filmer, 2005
 Richard, 1993 ***pergrandis*** (Iredale, 1937)
kostini Filmer, Monteiro, *tisii* T. C. Lan, 1978
 Lorenz & Verdasca, 2012

Subgenus *Eremiconus* Tucker & Tenorio, 2009

Type species: ***Conus minnamurra*** (Garrard, 1961); OD

Included species:

abellus Röckel & Korn, 1990 *lizardensis* Crosse, 1865
colmani Röckel & Korn, 1990 *minnamurra* (Garrard, 1961)
limpusi Röckel & Korn, 1990

Subgenus *Eugeniconus* da Motta, 1991

Type species: ***Conus nobilis*** Linnaeus, 1758; OD

Included species:

cordigera G. B. Sowerby II, *marchionatus* Hinds, 1843
 1866 ***nobilis*** Linnaeus, 1758

Subgenus *Floraconus* Iredale, 1930

Type species: ***Conus anemone*** Lamarck, 1810; OD

[Synonym: *Ketyconus* da Motta, 1991; type species: ***Conus tinia-***
nus Hwass in Bruguière, 1792; OD; n. syn.]

Included species:

anemone Lamarck, 1810 *gabelishi* da Motta &
aplustre Reeve, 1843 Ninomiya, 1982
ardisiaceus Kiener, 1850 ***mozambicus*** Hwass in
balteatus G. B. Sowerby I, Bruguière, 1792
 1833 *papilliferus* G. B. Sowerby I,
cocceus Reeve, 1844 1834
compressus G. B. Sowerby ***tinianus*** Hwass in Bruguière,
 II, 1866 1792

Subgenus *Fraterconus* Tucker & Tenorio, 2013

Type species: ***Conus distans*** Hwass in Bruguière, 1792; OD

Included species:

distans Hwass in Bruguière, 1792

Subgenus *Gastridium* Modeer, 1793

Type species: ***Conus geographus*** Linnaeus, 1758; SD,
 Winckworth (1935: 322)

[Synonyms: *Rollus* Montfort, 1810; type species: ***Conus geogra-***
phus Linnaeus, 1758; OD. *Utriculus* Schumacher, 1817; type
 species: ***Conus geographus*** Linnaeus, 1758; M. *Tuliparia*
 Swainson, 1840; type species: *Coronaxis nebulosa* Swainson, 1840
 [synonym of ***Conus tulipa***]; M. *Protostricoconus* Tucker &
 Tenorio, 2009; type species: ***Conus obscurus*** G.B. Sowerby I,
 1833; OD; n. syn.]

Included species:

cuvieri Crosse, 1858
eldredi Morrison, 1955
fragilissimus Petuch, 1979
geographus Linnaeus, 1758
obscurus G. B. Sowerby I, 1833
tulipa Linnaeus, 1758

Subgenus *Harmoniconus* da Motta, 1991

Type species: Conus musicus Hwass in Bruguière, 1792; OD

Included species:

mcbridei Lorenz, 2005
musicus Hwass in Bruguière, 1792
nanus G. B. Sowerby I, 1833
nux Broderip, 1833
parvatus Walls, 1979
paukstisi (Tucker, Tenorio & Chaney, 2011) n. comb.
sponsalis Hwass in Bruguière, 1792

Subgenus *Hermes* Montfort, 1810

Type species: Conus nussatella Linnaeus, 1758; OD

[Synonym: *Theliconus* Swainson, 1840; type species: **Conus nussatella** Linnaeus, 1758; OD]

Included species:

nussatella Linnaeus, 1758

Subgenus *Kalloconus* da Motta, 1991

Type species: Conus pulcher [Lightfoot], 1786; OD
 [Synonyms: *Genuanoconus* Tucker & Tenorio, 2009; type species: **Conus genuanus** Linnaeus, 1758; OD; n. syn. *Troaoconus* Tucker & Tenorio, 2009; type species: **Conus venulatus** Hwass in Bruguière, 1792; OD; n. syn.]

Included species:

ateralbus Kiener, 1850
atlanticoselvagem Afonso & Tenorio, 2004
byssinus (Röding, 1798)
genuanus Linnaeus, 1758
pseudonivifer Monteiro, Tenorio & Poppe, 2004
pulcher [Lightfoot], 1786
trochulus Reeve, 1844
venulatus Hwass in Bruguière, 1792

Subgenus *Kellyconus* Petuch, 2013

Type species: Conus patae Abbott, 1971; OD

Included species:

binghamae Petuch, 1987
ignotus Cargile, 1998
patae Abbott, 1971

Subgenus *Klemaeconus* Tucker & Tenorio, 2013

Type species: Rhizoconus klemae Cotton, 1953; OD

[Synonym: *Continuconus* Tucker & Tenorio, 2013; type species: **Conus plinthis** Richard & Moolenbeek, 1988; OD; n. syn.]

Included species:

estivali Moolenbeek & Richard, 1995
hirasei (Kuroda, 1956)
klemae (Cotton, 1953)
plinthis Richard & Moolenbeek, 1988
rufimaculosus Macpherson, 1959
sugimotonis Kuroda, 1928

Subgenus *Lamniconus* da Motta, 1991

Type species: Conus clerii Reeve, 1844; OD

Included species:

carcellesi Martins, 1945
clerii Reeve, 1844
lemniscatus Reeve, 1849

Subgenus *Lautoconus* Monterosato, 1923

Type species: Conus mediterraneus Hwass in Bruguière, 1792 [synonym of **Conus ventricosus** Gmelin, 1791]; OD

[Synonyms: *Africonus* Petuch, 1975; type species: **Conus cuneolus** Reeve, 1843; OD; n. syn. *Varioconus* da Motta, 1991; type species: *Conus variegatus* Kiener, 1848 OD; n. syn.]

Included species:

aemulus Reeve, 1844
africanus Kiener, 1848
albuquerquei Trovão, 1978
alexandrinus Kaicher, 1977
allaryi Bozzetti, 2008
anabelae Rolán & Röckel, 2001
anthonyi (Petuch, 1975)
antonioi (Cossignani, 2014) n. comb.
antoniomonteiroi Rolán, 1990
babaensis Rolán & Röckel, 2001
belairensis Pin & Leung Tack in Pin, 1989
bellulus Rolán, 1990
bernardinoi (Cossignani, 2014) n. comb.
boavistensis Rolán & Fernandes, 1990
bocagei Trovão, 1978
borgesii Trovão, 1979
bruguieri Kiener, 1846
bulbus Reeve, 1843
cabraloi (Cossignani, 2014) n. comb.
cacao Ferrario, 1983
cagarralensis (Cossignani, 2014) n. comb.
evorai Monteiro, Fernandes & Rolán, 1995
fantasmalis Rolán, 1990
felitae Rolán, 1990
fernandesi Tenorio, Afonso & Rolán, 2008
fiadeiroi (Tenorio, Afonso, Cunha & Rolán, 2014) n. comb.
filmeri Rolán & Röckel, 2000
flavusalbus Rolán & Röckel, 2000
fontonae Rolán & Trovão, 1990
franciscoi Rolán & Röckel, 2000
furnae Rolán, 1990
fuscoflavus Röckel, Rolán & Monteiro, 1980
fuscolineatus G. B. Sowerby III, 1905
gonsaloi (Afonso & Tenorio, 2014) n. comb.
grahami Röckel, Cosel & Burnay, 1980
guanche Lauer, 1993
guinaicus Hwass in Bruguière, 1792
hybridus Kiener, 1847
infinitus Rolán, 1990
irregularis G. B. Sowerby II, 1858
isabelarum Tenorio & Afonso, 2004
josephinae Rolán, 1980
joserochoi (Cossignani, 2014) n. comb.
jourdani da Motta, 1984
kerstemi Tenorio, Afonso & Rolán, 2008
lineopunctatus Kaicher, 1977
lobitensis Kaicher, 1977
longilineus Röckel, Rolán & Monteiro, 1980
lugubris Reeve, 1849
luquei Rolán & Trovão, 1990
maioensis Trovão, Rolán & Félix-Alves, 1990
melissae Tenorio, Afonso & Rolán, 2008
mercator Linnaeus, 1758
messiasi Rolán & Fernandes, 1990
micropunctatus Rolán & Röckel, 2000
calhetae Rolán, 1990
cepassi Trovão, 1975
chytreus Tryon, 1884
claudiae Tenorio & Afonso, 2004
cloveri Walls, 1978
condei (Afonso & Tenorio, 2014) n. comb.
crioulus Tenorio & Afonso, 2004
crotchii Reeve, 1849
cuneolus Reeve, 1843
curralensis Rolán, 1986
darmottai Trovão, 1979
decoratus Röckel, Rolán & Monteiro, 1980
delanoyae Trovão, 1979
denizi (Afonso & Tenorio, 2011) n. comb.

derrubado Rolán & Fernandes, 1990
desidiosus A. Adams, 1853
diegoi (Cossignani, 2014) n. comb.
diminutus Trovão & Rolán, 1986
dorotheae Monnier & Limpalaër, 2010
echinophilus (Petuch, 1975)
miruchae Röckel, Rolán & Monteiro, 1980
mordeirae Rolán & Trovão, 1990
nananjus Trovão, 1975
navarroi Rolán, 1986
negroides Kaicher, 1977
nobrei Trovão, 1975
pineaui Pin & Leung Tack, 1989
pseudocuneolus Röckel, Rolán & Monteiro, 1980
raulsilvai Rolán, Monteiro & Fernandes, 1998
regonae Rolán & Trovão, 1990
roeckeli Rolán, 1980
salletae (Cossignani, 2014) n. comb.
salreiensis Rolán, 1980

santanaensis (Afonso & Tenorio, 2014) n. comb.
saragasae Rolán, 1986
serranegrae Rolán, 1990
silviae (Cossignani, 2014) n. comb.
swinnyi (Tenorio, Afonso, Cunha & Rolán, 2014) n. comb.
tacomae Boyer & Pelorce, 2009
taslei Kiener, 1850
tenuilineatus Rolán & Röckel, 2001
teodorae Rolán & Fernandes, 1990
trencarti Nolf & Verstraeten, 2008
trovaoui Rolán & Röckel, 2000
unifasciatus Kiener, 1850
variegatus Kiener, 1848
vayssierei Pallary, 1906
ventricosus Gmelin, 1791
verdensis Trovão, 1979
vulcanus Tenorio & Afonso, 2004
wandae (Cossignani, 2014) n. comb.
xicoi Röckel, 1987
zebroides Kiener, 1848
zinhoi (Cossignani, 2014) n. comb.

Included species:
bahamensis Vink & Röckel, 1995
lindae Petuch, 1987

spurius Gmelin, 1791
therriaulti (Petuch, 2013) n. comb.

Subgenus *Lithoconus* Mörch, 1852

Type species: *Conus millepunctatus* Lamarck, 1822 [synonym of **Conus leopardus** Röding, 1798]; SD, Cossmann (1896: 186)

Included species:
leopardus Röding, 1798

Subgenus *Lividoconus* Wils, 1970

Type species: **Conus lividus** Hwass in Bruguière, 1792; OD

[Synonym: *Calamiconus* Tucker & Tenorio, 2009; type species: *Conus lischkeanus* Weinkauff, 1875; OD; n. syn.]

Included species:

diadema G. B. Sowerby I, 1834
escondidai Poppe & Tagaro, 2005
eximius Reeve, 1849
floridulus A. Adams & Reeve, 1848
garywilsoni Lorenz & Morrison, 2004

kermadecensis Iredale, 1913
lischkeanus Weinkauff, 1875
lividus Hwass in Bruguière, 1792
muriculatus G. B. Sowerby I, 1833
quercinus [Lightfoot], 1786
sanguinolentus Quoy & Gaimard, 1834

Subgenus *Leporiconus* Iredale, 1930

Type species: **Conus glans** Hwass in Bruguière, 1792; OD

Included species:

coffae Gmelin, 1791
glans Hwass in Bruguière, 1792
granum Röckel & Fischöder, 1985

luteus G. B. Sowerby I, 1833
tenuistriatus G. B. Sowerby II, 1858

Subgenus *Monteiroconus* da Motta, 1991

Type species: *Conus ambiguus* Reeve, 1844; OD

[Synonym: *Gladioconus* Tucker & Tenorio, 2009; type species: **Conus gladiator** Broderip, 1833; OD; n. syn.]

Included species:

ambiguus Reeve, 1844
bellocqae van Rossum, 1996
gladiator Broderip, 1833

mus Hwass in Bruguière, 1792
tabidus Reeve, 1844

Subgenus *Leptoconus* Swainson 1840

Type species: *Conus amadis* Gmelin, 1791; SD, Herrmannsen (1847: 584)

[Synonym: *Nataliconus* Tucker & Tenorio, 2009; type species: **Conus natalis** G. B. Sowerby II, 1858; OD; n. syn.]

Included species:

amadis Gmelin, 1791
hamanni Fainzilber & Mienis, 1986
immelmani Korn, 1998
kawamurai Habe, 1962
locumtenens Blumenbach, 1791

milneedwardsi Joussemaume, 1894
natalis G. B. Sowerby II, 1858
royaikeni (S. G. Veldsman, 2010) n. comb.

Subgenus *Papyriconus* Tucker & Tenorio, 2013

Type species: *Conus sculletti* Marsh, 1962; OD

Included species:

sculletti Marsh, 1962

Subgenus *Phasmoconus* Mörch, 1852

Type species: **Conus radiatus** Gmelin, 1791; SD, Cotton (1945: 250)

[Synonyms: *Fulgiconus* da Motta, 1991; type species: **Conus moluccensis** Küster, 1838; OD; n. syn.; *Graphiconus* da Motta, 1991; type species: **Conus inscriptus** Reeve, 1843; OD; n. syn.; *Thoraconus* da Motta, 1991; type species: *Conus exiguus* Lamarck, 1810; OD; n. syn. *Nimboconus* Tucker & Tenorio, 2013; type species: **Conus nimbosus** Hwass in Bruguière, 1792; OD; n. syn.]

Included species:

alabaster Reeve, 1849
alexandrei (Limpalaër & Monnier, 2012) n. comb.
amplus Röckel & Korn, 1992

andamanensis E. A. Smith, 1879
angioiorum Röckel & Moolenbeek, 1992

Subgenus *Lindaconus* Petuch, 2002

Type species: *Conus lindae* Petuch, 1987; OD

[Synonym: *Spuriconus* Petuch, 2003; type species: **Conus spurius** Gmelin, 1791; OD]

armadillo Shikama, 1971
asiaticus da Motta, 1985
australis Holten, 1802
balabacensis Filmer, 2012
blanfordianus Crosse, 1867
broderipii Reeve, 1844
cavalloni Fenaux, 1942
cebuensis Wils, 1990
ciderryi da Motta, 1985
cinereus Hwass in Bruguière, 1792
collisus Reeve, 1849
laterculatus G. B. Sowerby II, 1870
leobreraei da Motta & Martin, 1982
lienardi Bernardi & Crosse, 1861
lynceus G. B. Sowerby II, 1858
madecassinus (Bozzetti, 2012) n. comb.
marielae Rehder & Wilson, 1975
martinianus Reeve, 1844
moluccensis Küster, 1838
moolenbeeki Filmer, 2011
mucronatus Reeve, 1843
mulderi Fulton, 1936
neptunus Reeve, 1843
niederhoeferi (Monnier, Limpalaër & Lorenz, 2012) n. comb.
nimbosus Hwass in Bruguière, 1792
ochroleucus Gmelin, 1791
oishii (Shikama, 1977)
parius Reeve, 1844
petergabrieli Lorenz, 2006
pica A. Adams & Reeve, 1848
pretiosus G. Nevill & H. Nevill, 1874
primus Röckel & Korn, 1990
proximus G. B. Sowerby II, 1860
quiquandoni Lorenz & Barbier, 2008
radiatus Gmelin, 1791

conspersus Reeve, 1844
dampierensis Coomans & Filmer, 1985
daphne Boivin, 1864
erythraeensis Reeve, 1843
evansi Bondarev, 2001
exiguus Lamarck, 1810
flavus Röckel, 1985
gilvus Reeve, 1849
giorossii Bozzetti, 2005
goudeyi (Monnier & Limpalaër, 2012) n. comb.
habui Lan, 2002
inscriptus Reeve, 1843
janus Hwass in Bruguière, 1792
jickelii Weinkauff, 1873
kiicumulus Azuma, 1982
kuroharai (Habe, 1965)
ranonganus da Motta, 1978
richeri Richard & Moolenbeek, 1988
salzmanni G. Raybaudi Massilia & Rolán, 1997
santini (Monnier & Limpalaër, 2014) n. comb.
sartii Korn, Niederhöfer & Blöcher, 2002
scalptus Reeve, 1843
sculpturatus Röckel & da Motta, 1986
sertacinctus Röckel, 1986
sogodensis (Poppe, Monnier & Tagaro, 2012) n. comb.
solomonensis Delsaerd, 1992
spectrum Linnaeus, 1758
stramineus Lamarck, 1810
straturatus G. B. Sowerby II, 1865
sutanorcum Moolenbeek, Röckel & Bouchet, 2008
vappereai Monteiro, 2009
wittigi Walls, 1977
yemenensis Bondarev, 1997
zandbergeni Filmer & Moolenbeek, 2010
zapatosensis Röckel, 1987
zebra Lamarck, 1810

Subgenus *Pionoconus* Mörch, 1852

Type species: Conus magus Linnaeus, 1758; SD, **Cossmann** (1896: 160)

[Synonyms: *Heroconus da Motta, 1991*; type species: *Conus poehlianus* G. B. Sowerby III, 1887 [synonym of ***Conus consors*** G. B. Sowerby I, 1833]; OD. *Strioconus* Thiele, 1929; type species: ***Conus striatus*** Linnaeus, 1758; OD. *Socioconus da Motta, 1991*; type species: ***Conus consors*** G. B. Sowerby I, 1833; OD]

Included species:

achatinus Gmelin, 1791
arafurensis (Monnier, Limpalaër & Robin, 2013) n. comb.
atimovatae (Bozzetti, 2012) n. comb.
aurisiacus Linnaeus, 1758

barthelemyi Bernardi, 1861
boutetorum Richard & Rabiller, 2013
catus Hwass in Bruguière, 1792
circumciscus Born, 1778

consors G. B. Sowerby I, 1833
fiscoederi Röckel & da Motta, 1983
flocatus G. B. Sowerby I, 1841
fulmen Reeve, 1843
gauguini Richard & Salvat, 1973
stercusmuscarum Linnaeus, 1758
striatus Linnaeus, 1758
gubernator Hwass in Bruguière, 1792
koukae (Monnier, Limpalaër & Robin, 2013) n. comb.

leobottonii Lorenz, 2006
magus Linnaeus, 1758
monachus Linnaeus, 1758
morrisoni G. Raybaudi Massilia, 1991
nigromaculatus Röckel & Moolenbeek, 1992
nigropunctatus G. B. Sowerby II, 1858
robini (Limpalaër & Monnier, 2012) n. comb.
rouxi (Monnier, Limpalaër & Robin, 2013) n. comb.
striolatus Kiener, 1848

Subgenus *Plicaustraconus* Moolenbeek, 2008

Type species: Conus advertex (Garrard, 1961); OD

Included species:

adami Wils, 1988
advertex (Garrard, 1961)
angasi Tryon, 1884
baeri Röckel & Korn, 1992
bonfigliolii (Bozzetti, 2010) n. comb.
felix Fenzan, 2012
lozeti Richard, 1980
trigonus Reeve, 1848
visagenus Kilburn, 1974
wallangra (Garrard, 1961)

Subgenus *Pseudolilliconus* Tucker & Tenorio, 2009

Type species: Conus boschorum Moolenbeek & Coomans, 1993; OD

Included species:

boschorum Moolenbeek & Coomans, 1993
korni G. Raybaudi Massilia, 1993
kuiperi Moolenbeek, 2006
levis (Bozzetti, 2012) n. comb.
scalarispira (Bozzetti, 2012) n. comb.
traillii A. Adams, 1855
visseri Delsaerd, 1990
wallacei (Lorenz & Morrison, 2004)

Subgenus *Pseudonoduloconus* Tucker & Tenorio, 2009

Type species: Conus carnalis G. B. Sowerby III, 1879; OD

Included species:

carnalis G. B. Sowerby III, 1879

Subgenus *Pseudopterygia* Tucker & Tenorio, 2013

Type species: Conus terryi Tenorio & Poppe, 2004; OD

Included species:

terryi Tenorio & Poppe, 2004

Subgenus *Puncticulis* Swainson, 1840

Type species: Conus arenatus Hwass in Bruguière, 1792; M.

Included species:

arenatus Hwass in Bruguière, 1792
arenatus Hwass in Bruguière, 1792
pulicarius Hwass in Bruguière, 1792
vautieri Kiener, 1847
characteristicus Fischer von Waldheim, 1807
zeylanicus Gmelin, 1791

Subgenus *Pyruconus* Olsson, 1967

Type species: Conus patricius Hinds, 1843; OD

Included species:

fergusoni G. B. Sowerby II, ***patricius*** Hinds, 1843
1873

Remarks: Even though the two species are not in the same group in the molecular phylogeny, and to avoid the creation of a new sub-generic name, we have followed **Tucker & Tenorio (2009)**, who placed *C. fergusoni* and *C. patricius* in the same genus, *Pyruconus* (here ranked as subgenus), based on radula and shell characters.

Subgenus *Quasiconus* Tucker & Tenorio, 2009

Type species: Conus melvilli G. B. Sowerby III, 1879; OD

Included species:

melvilli G. B. Sowerby III, ***tuticorinensis*** Röckel & Korn,
1879 1990

Subgenus *Rhizoconus* Mörch, 1852

Type species: Conus miles Linnaeus, 1758; SD, **Cossmann (1896: 162)**

Included species:

<i>anosyensis</i> Bozzetti, 2008	<i>pele</i> Moolenbeek, 1996
<i>capitaneus</i> Linnaeus, 1758	<i>pertusus</i> Hwass in Bruguière, 1792
<i>cumingii</i> Reeve, 1848	<i>rattus</i> Hwass in Bruguière, 1792
<i>hyaena</i> Hwass in Bruguière, 1792	<i>rawaiensis</i> da Motta, 1978
<i>miles</i> Linnaeus, 1758	<i>tirardi</i> Röckel & Moolenbeek, 1996
<i>mustelinus</i> Hwass in Bruguière, 1792	<i>vexillum</i> Gmelin, 1791
<i>namocanus</i> Hwass in Bruguière, 1792	<i>wilsi</i> Delsaerdt, 1998

Subgenus *Rubroconus* Tucker & Tenorio, 2013

Type species: Conus coccineus Gmelin, 1791; OD

Included species:

coccineus Gmelin, 1791

Subgenus *Sandericonus* Petuch, 2013

Type species: Conus sanderi Wils & Moolenbeek, 1979; OD

Included species:

carioca Petuch, 1986
ednae (Petuch, 2013) n. comb.
sanderi Wils & Moolenbeek, 1979

Subgenus *Sciteconus* da Motta, 1991

Type species: Conus algoensis G. B. Sowerby I, 1834; OD

Included species:

algoensis G. B. Sowerby I, 1834
bairstovi G. B. Sowerby III, 1889
brianhayesi Korn, 2001
gradatulus Weinkauff, 1875
infrenatus Reeve, 1848
pictus Reeve, 1843

Subgenus *Splinoconus* da Motta, 1991

Type species: Conus biliosus Röding, 1798; OD

[Synonyms: *Kioconus* da Motta, 1991; type species: ***Conus reclusianus*** Bernardi, 1853; OD; n. syn. ***Ongoconus*** da Motta, 1991; type species: ***Conus voluminalis*** Reeve, 1843; OD; Precedence of *Splinoconus* (established at the rank of genus) over simultaneously established *Kioconus* and *Ongoconus* (established at the rank of subgenus) determined by ICBN (1999) Art. 24.1. ***Stellaconus*** Tucker & Tenorio, 2009; type species: *Conus malacanus* Hwass in Bruguière, 1792; OD; n. syn. ***Isoconus*** Tucker & Tenorio, 2013; type species: ***Conus corallinus*** Kiener, 1847; OD; n. syn. ***Nitidoconus*** Tucker & Tenorio, 2013; type species: ***Conus boeticus*** Reeve, 1844; OD; n. syn.]

Included species:

<i>alconnelli</i> da Motta, 1986	<i>typhon</i> Kilburn, 1975
<i>bayani</i> Jousseau, 1872	<i>martensi</i> E. A. Smith, 1884
<i>biliosus</i> (Röding, 1798)	<i>nielsenae</i> Marsh, 1962
<i>boeticus</i> Reeve, 1844	<i>nucleus</i> Reeve, 1848
<i>bondarevi</i> Röckel & G. Raybaudi Massilia, 1992	<i>olgiatii</i> Bozzetti, 2007
<i>caillaudii</i> Kiener, 1846	<i>papuensis</i> Coomans & Moolenbeek, 1982
<i>capitanellus</i> Fulton, 1938	<i>pauperculus</i> G. B. Sowerby I, 1834
<i>capreolus</i> Röckel, 1985	<i>purissimus</i> Filmer, 2011
<i>corallinus</i> Kiener, 1847	<i>queenslandis</i> da Motta, 1984
<i>damilai</i> Röckel & Korn, 1990	<i>reclusianus</i> Bernardi, 1853
<i>dayriti</i> Röckel & da Motta, 1983	<i>reductaspiralis</i> Walls, 1979
<i>empressae</i> Lorenz, 2001	<i>richardsae</i> Röckel & Korn, 1992
<i>fumigatus</i> Hwass in Bruguière, 1792	<i>roseorapum</i> G. Raybaudi & da Motta, 1990
<i>gilberti</i> (Bozzetti, 2012) n. comb.	<i>ruthae</i> (Monnier & Limpalaër, 2013) n. comb.
<i>gloriakiensis</i> Kuroda & Itô, 1961	<i>sazanka</i> Shikama, 1970
<i>hamamotoi</i> Yoshida & Koyama, 1984	<i>shikamai</i> Coomans, Moolenbeek & Wils, 1985
<i>lenavati</i> da Motta & Röckel, 1982	<i>sukhadwalai</i> Röckel & da Motta, 1983
<i>malacanus</i> Hwass in Bruguière, 1792	<i>urashimanus</i> Kuroda & Itô, 1961
<i>thevenardensis</i> da Motta, 1987	<i>vanvilstereni</i> (Moolenbeek & Zandbergen, 2013) n. comb.
<i>tribblei</i> Walls, 1977	<i>viola</i> Cernohorsky, 1977
<i>troendlei</i> Moolenbeek, Zandbergen & Bouchet, 2008	<i>voluminalis</i> Reeve, 1843

Subgenus *Stephanoconus* Mörch, 1852

Type species: Conus leucostictus Gmelin, 1791 [= ***Conus regius*** Gmelin, 1791]; SD, Wenz (1943: 1469)

[Synonyms: *Rhombus* Montfort, 1810 (invalid; junior homonym of *Rhombus* Walbaum, 1792); type species: ***Conus imperialis*** Linnaeus, 1758; OD. ***Cornutoconus*** Suzuki, 1972; type species: ***Cornutoconus lamellatus*** Suzuki, 1972 (= ***Conus chiangi*** (Azuma, 1972)); OD. ***Taranteconus*** Azuma, 1972; type species: ***Conus chiangi*** (Azuma, 1972); OD; n. syn. ***Protoconus*** da Motta, 1991 (invalid; junior homonym of *Protoconus* Yu, 1979 and *Protoconus* Stinchcomb, 1986); type species: ***Conus cedonulli*** Linnaeus, 1767; OD. ***Seminoleconus*** Petuch, 2003; type species: †***Conus violeatae*** Petuch 1988 (Pliocene); OD. ***Rhombiconus*** Tucker & Tenorio, 2009; type species: ***Conus imperialis*** Linnaeus, 1758; OD; n. syn. ***Tenorioconus*** Petuch & Drophlshagen, 2011; type species: ***Conus cedonulli*** Linnaeus, 1767; OD; n. syn.]

Included species:

- archon** Broderip, 1833
aurantius Hwass in Bruguière, 1792
bartschi G. D. Hanna & Strong, 1949
brunneus Wood, 1828
cedonulli Linnaeus, 1767
chiangi (Azuma, 1972)
curassaviensis Hwass in Bruguière, 1792
dominicanus Hwass in Bruguière, 1792
duffy Petuch, 1992
harlandi Petuch, 1987
granarius Kiener, 1847
imperialis Linnaeus, 1758
julieandreae Cargile, 1995
mappa [Lightfoot], 1786
polongimarumai Kosuge, 1980
pseudaurantius Vink & Cosel, 1985
pseudimperialis Moolenbeek, Zandbergen & Bouchet, 2008
regius Gmelin, 1791
sanguineus Kiener, 1850
solidus Gmelin, 1791
zonatus Hwass in Bruguière, 1792

Subgenus *Strategoconus* da Motta, 1991

Type species: Conus generalis Linnaeus, 1767; OD

[Synonyms: *Vituliconus* da Motta, 1991; type species: *Conus vitulinus* Hwass in Bruguière, 1792 (= *Conus planorbis* Born, 1778); OD; n. syn. *Rolaniconus* Tucker & Tenorio, 2009; type species: *Conus varius* Linnaeus, 1758; OD; n. syn.]

Included species:

- athenae* Filmer, 2011
augur [Lightfoot], 1786
axelrodi Walls, 1978
buniatus (Bozzetti, 2013) n. comb.
generalis Linnaeus, 1767
hanshassi (Lorenz & Barbier, 2012) n. comb.
hivanus Moolenbeek, Zandbergen & Bouchet, 2008
litoglyphus Hwass in Bruguière, 1792
maldivus Hwass in Bruguière, 1792
circumactus Iredale, 1929
dedonderi (Goethaels & D. Monsecour, 2013) n. comb.
ferrugineus Hwass in Bruguière, 1792
monile Hwass in Bruguière, 1792
planorbis Born, 1778
splendidulus G. B. Sowerby I, 1833
suduirauti Raybaudi Massilia, 2004
striatellus Link, 1807
swainsoni Estival & Cosel, 1986
varius Linnaeus, 1758

Subgenus *Tesselliconus* da Motta, 1991

Type species: Conus tessulatus Born, 1778; OD

Included species:

- eburneus** Hwass in Bruguière, 1792
edaphus Dall, 1910
sandwichensis Walls, 1978
suturatus Reeve, 1844
tessulatus Born, 1778

Subgenus *Textilia* Swainson, 1840

Type species: Conus bullatus Linnaeus, 1758; SD, Cotton (1945: 261)

Included species:

- adamsonii* Broderip, 1836
bullatus Linnaeus, 1758
cervus Lamarck, 1822
chiapponorum Lorenz, 2004
dusaveli (H. Adams, 1872)
julii Lienard, 1870
lucasi (Bozzetti, 2010) n. comb.
solangeae Bozzetti, 2004
timorensis Hwass in Bruguière, 1792
vicweei Old, 1973

Subgenus *Turriconus* Shikama & Habe, 1968

Type species: Turriconus nakayasui Shikama & Habe, 1968 [synonym of *Conus excelsus* G. B. Sowerby III, 1908]; OD

[Synonyms: *Kurodaconus* Shikama & Habe, 1968; type species: *Embrikena stupa* Kuroda, 1956; OD; n. syn. *Mitraconus*

Tucker & Tenorio, 2013; type species: *Conus mitratus* Hwass in Bruguière, 1792; OD; n. syn.]

Included species:

- acutangulus** Lamarck, 1810
andremenezi Olivera & Biggs, 2010
beatrice Tenorio, Poppe & Tagaro, 2007
cylindraceus Broderip & G. B. Sowerby I, 1830
excelsus G. B. Sowerby III, 1908
gondwanensis Röckel & Moolenbeek, 1995
gratacapii Pilsbry, 1904
luciae Moolenbeek, 1986
milesi E. A. Smith, 1887
miniexcelsus Olivera & Biggs, 2010
mitratus Hwass in Bruguière, 1792
praecellens A. Adams, 1855
rizali Olivera & Biggs, 2010
stupa (Kuroda, 1956)
stupella (Kuroda, 1956)

Subgenus *Virgiconus* Cotton, 1945

Type species: Conus virgo Linnaeus, 1758; OD

[Synonym: *Pseudohermes* Tucker & Tenorio 2013; type species: *Conus austroviola* Röckel & Korn, 1992; OD; n. syn.]

Included species:

- artoptus* G. B. Sowerby I, 1833
austroviola Röckel & Korn, 1992
berdulinus Veillard, 1972
coelinae Crosse, 1858
emaciatius Reeve, 1849
flavidus Lamarck, 1810
frigidus Reeve, 1848
kintoki Habe & Kosuge, 1970
moreleti Crosse, 1858
spicieri Bartsch & Rehder, 1943
terebra Born, 1778
tethys (Petuch & Sargent, 2011) n. comb.
violaceus Gmelin, 1791
virgo Linnaeus, 1758

Subgenus *Virroconus* Iredale, 1930

Type species: Conus ebraeus Linnaeus, 1758; OD

[Synonyms: *Dyraspis* Iredale, 1949; type species: *Conus dorreensis* Péron, 1807; OD, n. syn. *Miliariconus* Tucker & Tenorio, 2009; type species: *Conus miliaris* Hwass in Bruguière, 1792; OD, n. syn.]

Included species:

- abbreviatus** Reeve, 1843
aristophanes G. B. Sowerby II, 1857
chaldaeus (Röding, 1798)
coronatus Gmelin, 1791
dorreensis Péron, 1807
ebraeus Linnaeus, 1758
encaustus Kiener, 1845
judaeus Bergh, 1895
lecourtorum (Lorenz, 2011) n. comb.
miliaris Hwass in Bruguière, 1792
taeniatus Hwass in Bruguière, 1792
tiaratus G. B. Sowerby I, 1833

Incertae Sedis

Genus *Kenyonia* Brazier, 1896

Type species: Kenyonia pulcherrima Brazier, 1896; M

Included species:

- pulcherrima* Brazier, 1896

ACKNOWLEDGEMENTS

The authors thank Manuel J. Tenorio for helpful comments. Some of the specimens analysed by BMO for this work were obtained using grant support provided by the National Institutes of Health (GM48677 and ICBG grant 1U01TW008163). This

work was partly supported by the CONOTAX project, funded by the French 'Agence Nationale de la Recherche' (grant number ANR-13-JSV7-0013-01).

REFERENCES

- AVISE, J.C. & LIU, J.-X. 2011. On the temporal inconsistencies of Linnean taxonomic ranks. *Biological Journal of the Linnean Society*, **102**: 707–714.
- BANDYOPADHYAY, P.K., STEVENSON, B.J., OWNBY, J.-P., CADY, M.T., WATKINS, M. & OLIVERA, B.M. 2008. The mitochondrial genome of *Conus textile*, coxI-coxII intergenic sequences and conoidean evolution. *Molecular Phylogenetics and Evolution*, **46**: 215–223.
- BIGGS, J.S., WATKINS, M., PUILLANDRE, N., OWNBY, J.P., LOPEZ-VERA, E., CHRISTENSEN, S., MORENO, K.J., BERNALDEZ, J., LICEA-NAVARRO, A., SHOWERS CORNELI, P. & OLIVERA, B.M. 2010. Evolution of *Conus* peptide toxins: analysis of *Conus californicus* Reeve, 1844. *Molecular Phylogenetics and Evolution*, **56**: 1–12.
- BOUCHET, P., KANTOR, Y., SYSOEV, A. & PUILLANDRE, N. 2011. A new operational classification of the Conoidea (Gastropoda). *Journal of Molluscan Studies*, **77**: 273–308.
- CASTELIN, M., LORION, J., BRISSET, J., CRUAUD, C., MAESTRATI, P., UTGE, J. & SAMADI, S. 2012. Speciation patterns in gastropods with long-lived larvae from deep-sea seamounts. *Molecular Ecology*, **21**: 4828–4853.
- CASTELIN, M., PUILLANDRE, N., KANTOR, Y.I., TERRY, Y., CRUAUD, C., BOUCHET, P. & HOLFORD, M. 2012. Macroevolution of venom apparatus innovations in auger snails (Gastropoda: Conoidea; Terebridae). *Molecular Phylogenetics and Evolution*, **64**: 21–24.
- CLAREMONT, M., VERMEIJ, G.J., WILLIAMS, S.T. & REID, D.G. 2013. Global phylogeny and new classification of the Rapaninae (Gastropoda: Muricidae), dominant molluscan predators on tropical rocky seashores. *Molecular Phylogenetics and Evolution*, **66**: 91–102.
- COSSMANN, M. 1896. *Essais de paléontologie comparée, 2ème livraison*. The Author and Comptoirs Géologiques, Paris.
- COTTON, B.C. 1945. A catalogue of the cone snails (Conidae) in the South Australian Museum. *Records of the South Australian Museum*, **8**: 229–280.
- DA MOTTA, A.J. 1991. *A systematic classification of the gastropod family Conidae at the generic level*. La Conchiglia, Roma.
- DE QUEIROZ, K. 1998. The general lineage concept of species, species criteria, and the process of speciation: a conceptual unification and terminological recommendations. In: *Endless forms: species and speciation* (D.J. Howard & S.H. Berlocher, eds), pp. 57–75. Oxford University Press, Oxford.
- DUBOIS, A. & BOUR, R. 2010. The distinction between family-series and class-series nomina in zoological nomenclature, with emphasis on the nomina created by Batsch (1788, 1789) and on the higher nomenclature of turtles. *Bonn Zoological Bulletin*, **57**: 149–171.
- DUDA, T.F. & KOHN, A.J. 2005. Species-level phylogeography and evolutionary history of the hyperdiverse marine gastropod genus *Conus*. *Molecular Phylogenetics and Evolution*, **34**: 257–272.
- DUDA, T.F. & PALUMBI, S.R. 1999. Molecular genetics of ecological diversification: duplication and rapid evolution of toxin genes of the venomous gastropod *Conus*. *Proceedings of the National Academy of Sciences of the USA*, **96**: 6820–6823.
- ELLIGER, C.A., RICHMOND, T.A., LEBARIC, Z.N., PIERCE, N.T., SWEEDLER, J.V. & GILLY, W.F. 2011. Diversity of conotoxin types from *Conus californicus* reflects a diversity of prey types and a novel evolutionary history. *Toxicon*, **57**: 311–322.
- ESPIRITU, D.J.D., WATKINS, M., DIA-MONJE, V., CARTIER, G.E., CRUZ, L.E. & OLIVERA, B.M. 2001. Venomous cone snails: molecular phylogeny and the generation of toxin diversity. *Toxicon*, **39**: 1899–1916.
- HOLFORD, M., ZHANG, M.M., GOWD, K.H., AZAM, L., GREEN, B.R., WATKINS, M., OWNBY, J.P., YOSHIKAMI, D., BULAJ, G. & OLIVERA, B.M. 2009. Pruning nature: biodiversity-derived discovery of novel sodium channel blocking conotoxins from *Conus bullatus*. *Toxicon*, **53**: 90–98.
- INTERNATIONAL COMMISSION ON ZOOLOGICAL NOMENCLATURE. 1999. *International code of zoological nomenclature*. Edn 4. International Trust for Zoological Nomenclature, London.
- JIMENEZ, E.C., OLIVERA, B.M. & TEICHERT, R.W. 2007. α C-conotoxin PrXA: a new family of nicotinic acetylcholine receptor antagonists. *Biochemistry*, **46**: 8717–8724.
- KANTOR, Y.I. & PUILLANDRE, N. 2012. Evolution of the radular apparatus in Conoidea (Gastropoda: Neogastropoda) as inferred from a molecular phylogeny. *Malacologia*, **55**: 55–90.
- KOHN, A.J. 1966. Food specialization in *Conus* in Hawaii and California. *Ecology*, **47**: 1041–1043.
- KRAUS, N.J., SHOWERS CORNELI, P., WATKINS, M., BANDYOPADHYAY, P.K., SEGER, J. & OLIVERA, B.M. 2011. Against expectation: a short sequence with high signal elucidates cone snail phylogeny. *Molecular Phylogenetics and Evolution*, **58**: 383–389.
- KRAUS, N.J., WATKINS, M., BANDYOPADHYAY, P.K., SEGER, J., OLIVERA, B.M. & SHOWERS CORNELI, P. 2012. A very short, functionally constrained sequence diagnoses cone snails in several *Conasprella* clades. *Molecular Phylogenetics and Evolution*, **65**: 335–338.
- OLIVERA, B.M. 2006. *Conus* peptides: biodiversity-based discovery and exogenomics. *Journal of Biological Chemistry*, **281**: 31173–31177.
- PETUCH, E.B.M. 2013. *Biogeography and biodiversity of Western Atlantic mollusks*. CRC Press Inc., Boca Raton, USA.
- PUILLANDRE, N. & HOLFORD, M. 2010. The Terebridae and teretoxins: combining phylogeny and anatomy for concerted discovery of bioactive compounds. *BMC Chemical Biology*, **10**: 7.
- PUILLANDRE, N., KANTOR, Y., SYSOEV, A., COULOUX, A., MEYER, C., RAWLINGS, T., TODD, J.A. & BOUCHET, P. 2011. The dragon tamed? A molecular phylogeny of the Conoidea (Mollusca, Gastropoda). *Journal of Molluscan Studies*, **77**: 259–272.
- PUILLANDRE, N., WATKINS, M. & OLIVERA, B.M. 2010. Evolution of *Conus* peptide genes: duplication and positive selection in the A-superfamily. *Journal of Molecular Evolution*, **70**: 190–202.
- PUILLANDRE, N., BOUCHET, P., DUDA, T.F., KAUFERSTEIN, S., KOHN, A.J., OLIVERA, B.M., WATKINS, M. & MEYER, C. 2014. Molecular Phylogeny and evolution of the cone snails (Gastropoda, Conoidea). *Molecular Phylogenetics and Evolution*, doi: 10.1016/j.ympev.2014.05.023.
- REID, D.G., DYAL, P. & WILLIAMS, S.T. 2012. A global molecular phylogeny of 147 periwinkle species (Gastropoda, Littorininae). *Zoologica Scripta*, **41**: 125–136.
- SAMADI, S. & BARBEROUSSE, A. 2006. The tree, the network, and the species. *Biological Journal of the Linnean Society*, **89**: 509–521.
- TUCKER, J.K. & TENORIO, M.J. 2009. *Systematic classification of Recent and fossil conoidean gastropods*. Conchbooks, Hackenheim, Germany.
- TUCKER, J.K. & TENORIO, M.J. 2013. *Illustrated catalog of the living cone shells*. MDM Publishing, Wellington, USA.
- TUCKER, J.K., TENORIO, M.J. & STAHLSCHEIDT, P. 2011. The genus *Benthofascis* (Gastropoda: Conoidea): a revision with descriptions of new species. *Zootaxa*, **2796**: 1–14.
- WALLS, J.G. 1978. Supraspecific groupings in living cones (Mollusca: Conidae). *The Pariah*, **3**: 1–13.
- WENZ, W. 1940. Teil 1: Allgemeiner Teil und Prosobranchia. In: *Handbuch der Paläozoologie, Band 6, Gastropoda*, Vol. 12 (O.H. Schindewolf, eds), pp. 721–960. Borntraeger, Berlin.
- WILLIAMS, S.T. 2007. Origins and diversification of Indo-West Pacific marine fauna: evolutionary history and biogeography of turban shells (Gastropoda, Turbinidae). *Biological Journal of the Linnean Society*, **92**: 573–592.
- WILLIAMS, S.T. & DUDA, T.F. 2008. Did tectonic activity stimulate oligo-miocene speciation in the Indo-west Pacific? *Evolution*, **62**: 1618–1634.
- WoRMS. 2014. *World Register of Marine Species*. Available from <http://www.marinespecies.org>, at VLIZ. Accessed 10 May 2014.

APPENDIX

Appendix Table 1. List of the valid Recent species of cones and their current classification.

Species	Genus (Subgenus)
<i>abbas</i> Hwass in Bruguière, 1792	<i>Conus (Cylinder)</i>
<i>abbreviatus</i> Reeve, 1843	<i>Conus (Virroconus)</i>
<i>abrolhosensis</i> Petuch, 1987	<i>Conus (Dauciconus)</i>
<i>achatinus</i> Gmelin, 1791	<i>Conus (Pionoconus)</i>
<i>aculeiformis</i> (Reeve, 1844)	<i>Conasprella (Fusiconus)</i>
<i>acutangulus</i> Lamarck, 1810	<i>Conus (Turriconus)</i>
<i>adamii</i> Wils, 1988	<i>Conus (Plicaustraconus)</i>
<i>adamsonii</i> Broderip, 1836	<i>Conus (Textilia)</i>
<i>advertex</i> (Garrard, 1961)	<i>Conus (Plicaustraconus)</i>
<i>aemulus</i> Reeve, 1844	<i>Conus (Lautoconus)</i>
<i>africanus</i> Kiener, 1848	<i>Conus (Lautoconus)</i>
<i>alabaster</i> Reeve, 1849	<i>Conus (Phasmoconus)</i>
<i>alainallaryi</i> Bozzetti & Monnier, 2009	<i>Conus (Dauciconus)</i>
<i>albellus</i> Röckel & Korn, 1990	<i>Conus (Eremiconus)</i>
<i>albuquerquei</i> Trovão, 1978	<i>Conus (Lautoconus)</i>
<i>alconnelli</i> da Motta, 1986	<i>Conus (Splinoconus)</i>
<i>alexandrei</i> (Limpalaër & Monnier, 2012)	<i>Conus (Phasmoconus)</i>
<i>alexandremonteiroi</i> (Cossignani, 2014)	<i>Conasprella (Ximeniconus)</i>
<i>alexandrinus</i> Kaicher, 1977	<i>Conus (Lautoconus)</i>
<i>algoensis</i> G. B. Sowerby I, 1834	<i>Conus (Sciteconus)</i>
<i>alisi</i> (Moolenbeek, Röckel & Richard, 1995)	<i>Conasprella (Boucheticonus)</i>
<i>allamandi</i> (Petuch, 2013)	<i>Conasprella (Ximeniconus)</i>
<i>allaryi</i> Bozzetti, 2008	<i>Conus (Lautoconus)</i>
<i>amadis</i> Gmelin, 1791	<i>Conus (Leptoconus)</i>
<i>ambiguus</i> Reeve, 1844	<i>Conus (Monteiroconus)</i>
<i>ammiralis</i> Linnaeus, 1758	<i>Conus (Cylinder)</i>
<i>amphiurgus</i> Dall, 1889	<i>Conus (Dauciconus)</i>
<i>amplus</i> Röckel & Korn, 1992	<i>Conus (Phasmoconus)</i>
<i>anabathrum</i> Crosse, 1865	<i>Conus (Dauciconus)</i>
<i>anabellae</i> Rolán & Röckel, 2001	<i>Conus (Lautoconus)</i>
<i>anaglyptica</i> (Crosse, 1865)	<i>Conasprella (Ximeniconus)</i>
<i>andamanensis</i> E. A. Smith, 1879	<i>Conus (Phasmoconus)</i>
<i>andremenezi</i> Olivera & Biggs, 2010	<i>Conus (Turriconus)</i>
<i>anemone</i> Lamarck, 1810	<i>Conus (Floraconus)</i>
<i>angasi</i> Tryon, 1884	<i>Conus (Plicaustraconus)</i>
<i>angioiorum</i> Röckel & Moolenbeek, 1992	<i>Conus (Phasmoconus)</i>
<i>anosyensis</i> Bozzetti, 2008	<i>Conus (Rhizoconus)</i>
<i>anthonyi</i> (Petuch, 1975)	<i>Conus (Lautoconus)</i>
<i>antonioi</i> (Cossignani, 2014)	<i>Conus (Lautoconus)</i>
<i>antoniomonteiroi</i> Rolán, 1990	<i>Conus (Lautoconus)</i>
<i>aphrodite</i> (Petuch, 1979)	<i>Conasprella (Conasprella)</i>
<i>aplustre</i> Reeve, 1843	<i>Conus (Floraconus)</i>
<i>arafurensis</i> (Monnier, Limpalaër & Robin, 2013)	<i>Conus (Pionoconus)</i>
<i>araneosus</i> [Lightfoot], 1786	<i>Conus (Conus)</i>
<i>arangoi</i> Sarasúa, 1977	<i>Conus (Dauciconus)</i>
<i>arawak</i> (Petuch & R. F. Myers, 2014)	<i>Conasprella (Ximeniconus)</i>
<i>archon</i> Broderip, 1833	<i>Conus (Stephanoconus)</i>
<i>arcuata</i> (Broderip & G. B. Sowerby I, 1829)	<i>Conasprella (Kohniconus)</i>
<i>ardisiaceus</i> Kiener, 1850	<i>Conus (Floraconus)</i>
<i>arenatus</i> Hwass in Bruguière, 1792	<i>Conus (Puncticulis)</i>
<i>aristophanes</i> G. B. Sowerby II, 1857	<i>Conus (Virroconus)</i>
<i>armadillo</i> Shikama, 1971	<i>Conus (Phasmoconus)</i>

Continued

Appendix Table 1. Continued

Species	Genus (Subgenus)
<i>armiger</i> (Crosse, 1858)	<i>Conasprella (Dalliconus)</i>
<i>articulata</i> (G.B. Sowerby II, 1873)	<i>Conasprella (Conasprella)</i>
<i>artoptus</i> G. B. Sowerby I, 1833	<i>Conus (Virgiconus)</i>
<i>asiaticus</i> da Motta, 1985	<i>Conus (Phasmoconus)</i>
<i>ateralbus</i> Kiener, 1850	<i>Conus (Kalloconus)</i>
<i>athenae</i> Filmer, 2011	<i>Conus (Strategoconus)</i>
<i>atimovatae</i> (Bozzetti, 2012)	<i>Conus (Pionoconus)</i>
<i>atlanticoselvagem</i> Afonso & Tenorio, 2004	<i>Conus (Kalloconus)</i>
<i>attenuatus</i> Reeve, 1844	<i>Conus (Attenuiconus)</i>
<i>augur</i> [Lightfoot], 1786	<i>Conus (Strategoconus)</i>
<i>aulicus</i> Linnaeus, 1758	<i>Conus (Darioconus)</i>
<i>aurantius</i> Hwass in Bruguière, 1792	<i>Conus (Stephanoconus)</i>
<i>auratinus</i> da Motta, 1982	<i>Conus (Darioconus)</i>
<i>aureonimbosus</i> Petuch, 1987	<i>Conus (Attenuiconus)</i>
<i>aureopunctatus</i> Petuch, 1987	<i>Conus (Dauciconus)</i>
<i>aureus</i> Hwass in Bruguière, 1792	<i>Conus (Cylinder)</i>
<i>auricomus</i> Hwass in Bruguière, 1792	<i>Conus (Darioconus)</i>
<i>aurisiacus</i> Linnaeus, 1758	<i>Conus (Pionoconus)</i>
<i>australis</i> Holten, 1802	<i>Conus (Phasmoconus)</i>
<i>austroviola</i> Röckel & Korn, 1992	<i>Conus (Virgiconus)</i>
<i>axelrodi</i> Walls, 1978	<i>Conus (Strategoconus)</i>
<i>babaensis</i> Rolán & Röckel, 2001	<i>Conus (Lautoconus)</i>
<i>baccata</i> (G. B. Sowerby III, 1877)	<i>Conasprella (Ximeniconus)</i>
<i>baeri</i> Röckel & Korn, 1992	<i>Conus (Plicaustraconus)</i>
<i>bahamensis</i> Vink & Röckel, 1995	<i>Conus (Lindaconus)</i>
<i>baileyi</i> (Röckel & da Motta, 1979)	<i>Conasprella (Conasprella)</i>
<i>bairstowi</i> G. B. Sowerby III, 1889	<i>Conus (Sciteconus)</i>
<i>bajanensis</i> (Nowell-Usticke, 1968)	<i>Conasprella (Dalliconus)</i>
<i>balabacensis</i> Filmer, 2012	<i>Conus (Phasmoconus)</i>
<i>balteatus</i> G. B. Sowerby I, 1833	<i>Conus (Floraconus)</i>
<i>bandanus</i> Hwass in Bruguière, 1792	<i>Conus (Conus)</i>
<i>barbieri</i> G. Raybaudi Massilia, 1995	<i>Conus (Cylinder)</i>
<i>barthelemyi</i> Bernardi, 1861	<i>Conus (Pionoconus)</i>
<i>bartschi</i> G. D. Hanna & Strong, 1949	<i>Conus (Stephanoconus)</i>
<i>bayani</i> Jousseau, 1872	<i>Conus (Splinoconus)</i>
<i>bayeri</i> Petuch, 1987	<i>Conus (Dauciconus)</i>
<i>beatrice</i> Tenorio, Poppe & Tagaro, 2007	<i>Conus (Turriconus)</i>
<i>behelokensis</i> Lauer, 1989	<i>Conus (Darioconus)</i>
<i>belairensis</i> Pin & Leung Tack in Pin, 1989	<i>Conus (Lautoconus)</i>
<i>belizeanus</i> (Petuch & Sargent, 2011)	<i>Conus (Dauciconus)</i>
<i>bellocqae</i> van Rossum, 1996	<i>Conus (Monteiroconus)</i>
<i>bellulus</i> Rolán, 1990	<i>Conus (Lautoconus)</i>
<i>bengalensis</i> (Okutani, 1968)	<i>Conus (Cylinder)</i>
<i>berdulinus</i> Veillard, 1972	<i>Conus (Virgiconus)</i>
<i>bernardinoi</i> (Cossignani, 2014)	<i>Conus (Lautoconus)</i>
<i>berschaueri</i> (Petuch & R. F. Myers, 2014)	<i>Conasprella (Ximeniconus)</i>
<i>bessei</i> Petuch, 1992	<i>Conus (Dauciconus)</i>
<i>betulinus</i> Linnaeus, 1758	<i>Conus (Dendroconus)</i>
<i>biancae</i> Bozzetti, 2010	<i>Conus (Darioconus)</i>
<i>biliosus</i> (Röding, 1798)	<i>Conus (Splinoconus)</i>
<i>binghamae</i> Petuch, 1987	<i>Conus (Kellyconus)</i>
<i>biraghii</i> (G. Raybaudi Massilia, 1992)	<i>Conasprella (Lilliconus)</i>
<i>blanfordianus</i> Crosse, 1867	<i>Conus (Phasmoconus)</i>
<i>boavistensis</i> Rolán & Fernandes, 1990	<i>Conus (Lautoconus)</i>
<i>bocagei</i> Trovão, 1978	<i>Conus (Lautoconus)</i>
<i>boeticus</i> Reeve, 1844	<i>Conus (Splinoconus)</i>
<i>boholensis</i> (Petuch, 1979)	<i>Conasprella (Conasprella)</i>

Continued

Appendix Table 1. *Continued*

Species	Genus (Subgenus)
<i>bondarevi</i> Röckel & G. Raybaudi Massilia, 1992	<i>Conus (Splinoconus)</i>
<i>bonfigliolii</i> (Bozzetti, 2010)	<i>Conus (Plicaustraconus)</i>
<i>borgesii</i> Trovão, 1979	<i>Conus (Lautoconus)</i>
<i>boschorum</i> Moolenbeek & Coomans, 1993	<i>Conus (Pseudolilliconus)</i>
<i>boucheti</i> (Richard, 1983)	<i>Conasprella (Conasprella)</i>
<i>boui</i> da Motta, 1988	<i>Conus (Dauciconus)</i>
<i>boutetorum</i> Richard & Rabiller, 2013	<i>Conus (Pionoconus)</i>
<i>bozzettii</i> (Lauer, 1991)	<i>Conasprella (Conasprella)</i>
<i>brianhayesi</i> Korn, 2001	<i>Conus (Sciteconus)</i>
<i>broderipii</i> Reeve, 1844	<i>Conus (Phasmoconus)</i>
<i>bruguieri</i> Kiener, 1846	<i>Conus (Lautoconus)</i>
<i>brunneobandatus</i> Petuch, 1992	<i>Conus (Dauciconus)</i>
<i>brunneofilaris</i> Petuch, 1990	<i>Conus (Dauciconus)</i>
<i>brunneus</i> Wood, 1828	<i>Conus (Stephanoconus)</i>
<i>bruuni</i> Powell, 1958	<i>Conus (Afonsoconus)</i>
<i>bulbus</i> Reeve, 1843	<i>Conus (Lautoconus)</i>
<i>bullatus</i> Linnaeus, 1758	<i>Conus (Textilia)</i>
<i>buniatus</i> (Bozzetti, 2013)	<i>Conus (Strategoconus)</i>
<i>burryae</i> Clench, 1942	<i>Conus (Dauciconus)</i>
<i>buxeus</i> (Röding, 1798)	<i>Conus (Dendroconus)</i>
<i>byssinus</i> (Röding, 1798)	<i>Conus (Kalloconus)</i>
<i>cabraloi</i> (Cossignani, 2014)	<i>Conus (Lautoconus)</i>
<i>cacao</i> Ferrario, 1983	<i>Conus (Lautoconus)</i>
<i>cagarralensis</i> (Cossignani, 2014)	<i>Conus (Lautoconus)</i>
<i>caillaudii</i> Kiener, 1846	<i>Conus (Splinoconus)</i>
<i>cakobau</i> (Moolenbeek, Röckel & Bouchet, 2008)	<i>Profundiconus</i>
<i>calhetae</i> Rolán, 1990	<i>Conus (Lautoconus)</i>
<i>californicus</i> (Reeve, 1844)	<i>Californiconus</i>
<i>cancellatus</i> Hwass in Bruguière, 1792	<i>Conus (Dauciconus)</i>
<i>canonicus</i> Hwass in Bruguière, 1792	<i>Conus (Cylinder)</i>
<i>capitanellus</i> Fulton, 1938	<i>Conus (Splinoconus)</i>
<i>capitaneus</i> Linnaeus, 1758	<i>Conus (Rhizoconus)</i>
<i>capreolus</i> Röckel, 1985	<i>Conus (Splinoconus)</i>
<i>characteristicus</i> Fischer von Waldheim, 1807	<i>Conus (Punctulicis)</i>
<i>carcellesi</i> Martins, 1945	<i>Conus (Lamniconus)</i>
<i>cardinalis</i> Hwass in Bruguière, 1792	<i>Conus (Dauciconus)</i>
<i>cargilei</i> Coltro, 2004	<i>Conus (Dauciconus)</i>
<i>caroca</i> Petuch, 1986	<i>Conus (Sandericonus)</i>
<i>carnalis</i> G. B. Sowerby III, 1879	<i>Conus</i> <i>(Pseudonoduloconus)</i>
<i>castaneus</i> Kiener, 1848	<i>Conus (Dauciconus)</i>
<i>catus</i> Hwass in Bruguière, 1792	<i>Conus (Pionoconus)</i>
<i>cavillonii</i> Fenaux, 1942	<i>Conus (Phasmoconus)</i>
<i>caysalensis</i> L. Raybaudi & Prati, 1994	<i>Conus (Dauciconus)</i>
<i>cebuensis</i> Wils, 1990	<i>Conus (Phasmoconus)</i>
<i>cedonulli</i> Linnaeus, 1767	<i>Conus (Stephanoconus)</i>
<i>centurio</i> (Born, 1778)	<i>Conasprella (Kohnniconus)</i>
<i>cepassi</i> Trovão, 1975	<i>Conus (Lautoconus)</i>
<i>ceruttii</i> Cargile, 1997	<i>Conus (Dauciconus)</i>
<i>cervus</i> Lamarck, 1822	<i>Conus (Textilia)</i>
<i>chaldaeus</i> (Röding, 1798)	<i>Conus (Virroconus)</i>
<i>chiangi</i> (Azuma, 1972)	<i>Conus (Stephanoconus)</i>
<i>chiapponorum</i> Lorenz, 2004	<i>Conus (Textilia)</i>
<i>chytres</i> Tryon, 1884	<i>Conus (Lautoconus)</i>
<i>ciderryi</i> da Motta, 1985	<i>Conus (Phasmoconus)</i>
<i>cinereus</i> Hwass in Bruguière, 1792	<i>Conus (Phasmoconus)</i>

*Continued*Appendix Table 1. *Continued*

Species	Genus (Subgenus)
<i>cingulatus</i> Lamarck, 1810	<i>Conus (Dauciconus)</i>
<i>circumactus</i> Iredale, 1929	<i>Conus (Strategoconus)</i>
<i>circumciscus</i> Born, 1778	<i>Conus (Pionoconus)</i>
<i>clarus</i> E. A. Smith, 1881	<i>Conus (Mamicoconus)</i>
<i>claudiae</i> Tenorio & Afonso, 2004	<i>Conus (Lautoconus)</i>
<i>clerii</i> Reeve, 1844	<i>Conus (Lamniconus)</i>
<i>cloveri</i> Walls, 1978	<i>Conus (Lautoconus)</i>
<i>cocceus</i> Reeve, 1844	<i>Conus (Floraconus)</i>
<i>coccineus</i> Gmelin, 1791	<i>Conus (Rubroconus)</i>
<i>coelinae</i> Crosse, 1858	<i>Conus (Virgiconus)</i>
<i>coffea</i> Gmelin, 1791	<i>Conus (Leporiconus)</i>
<i>collisus</i> Reeve, 1849	<i>Conus (Phasmoconus)</i>
<i>colmani</i> Röckel & Korn, 1990	<i>Conus (Eremiconus)</i>
<i>colombi</i> (Monnier & Limpalaër, 2012)	<i>Conus (Dauciconus)</i>
<i>colombianus</i> Petuch, 1987	<i>Conus (Dauciconus)</i>
<i>coltrorum</i> (Petuch & R. F. Myers, 2014)	<i>Conus (Dauciconus)</i>
<i>comatosa</i> (Pilsbry, 1904)	<i>Conasprella (Fusiconus)</i>
<i>compressus</i> G. B. Sowerby II, 1866	<i>Conus (Floraconus)</i>
<i>condei</i> (Afonso & Tenorio, 2014)	<i>Conus (Lautoconus)</i>
<i>consors</i> G. B. Sowerby I, 1833	<i>Conus (Pionoconus)</i>
<i>conspersus</i> Reeve, 1844	<i>Conus (Phasmoconus)</i>
<i>corallinus</i> Kiener, 1847	<i>Conus (Splinoconus)</i>
<i>cordigera</i> G. B. Sowerby II, 1866	<i>Conus (Eugeniconus)</i>
<i>coriolisi</i> (Röckel, Richard & Moolenbeek, 1995)	<i>Conasprella (Fusiconus)</i>
<i>coromandelica</i> (E. A. Smith, 1894)	<i>Conasprella</i> <i>(Pseudoconorbis)</i>
<i>coronatus</i> Gmelin, 1791	<i>Conus (Virroconus)</i>
<i>crioulus</i> Tenorio & Afonso, 2004	<i>Conus (Lautoconus)</i>
<i>crocatus</i> Lamarck, 1810	<i>Conus (Darioconus)</i>
<i>crotchii</i> Reeve, 1849	<i>Conus (Lautoconus)</i>
<i>cumingii</i> Reeve, 1848	<i>Conus (Rhizoconus)</i>
<i>cuna</i> Petuch, 1998	<i>Conus (Atlanticonus)</i>
<i>cuneolus</i> Reeve, 1843	<i>Conus (Lautoconus)</i>
<i>curassaviensis</i> Hwass in Bruguière, 1792	<i>Conus (Stephanoconus)</i>
<i>curralensis</i> Rolán, 1986	<i>Conus (Lautoconus)</i>
<i>cuvieri</i> Crosse, 1858	<i>Conus (Gastridium)</i>
<i>cyanostoma</i> A. Adams, 1855	<i>Conus (Mamicoconus)</i>
<i>cylindraceus</i> Broderip & G. B. Sowerby I, 1830	<i>Conus (Turriconus)</i>
<i>dalli</i> Stearns, 1873	<i>Conus (Cylinder)</i>
<i>damasoi</i> (Cossignani, 2007)	<i>Conasprella (Ximeniconus)</i>
<i>damottai</i> Trovão, 1979	<i>Conus (Lautoconus)</i>
<i>dampierensis</i> Coomans & Filmer, 1985	<i>Conus (Phasmoconus)</i>
<i>daniilii</i> Röckel & Korn, 1990	<i>Conus (Splinoconus)</i>
<i>daphne</i> Boivin, 1864	<i>Conus (Phasmoconus)</i>
<i>darkini</i> Röckel, Korn & Richard, 1993	<i>Conus (Embrikena)</i>
<i>daucus</i> Hwass in Bruguière, 1792	<i>Conus (Dauciconus)</i>
<i>dayriti</i> Röckel & da Motta, 1983	<i>Conus (Splinoconus)</i>
<i>decoratus</i> Röckel, Rolán & Monteiro, 1980	<i>Conus (Lautoconus)</i>
<i>dedonderi</i> (Goethaels & D. Monsecour, 2013)	<i>Conus (Strategoconus)</i>
<i>delanoyae</i> Trovão, 1979	<i>Conus (Lautoconus)</i>
<i>delessertii</i> (Récluz, 1843)	<i>Conasprella (incertae sedis)</i>
<i>denizi</i> (Afonso & Tenorio, 2011)	<i>Conus (Lautoconus)</i>
<i>derrubado</i> Rolán & Fernandes, 1990	<i>Conus (Lautoconus)</i>
<i>desidiosus</i> A. Adams, 1853	<i>Conus (Lautoconus)</i>
<i>deynzerorum</i> Petuch, 1995	<i>Conus (Dauciconus)</i>
<i>diadema</i> G. B. Sowerby I, 1834	<i>Conus (Lividoconus)</i>

Continued

CLASSIFICATION OF CONE SNAILS

Appendix Table 1. *Continued*

Species	Genus (Subgenus)
<i>dianthus</i> G. B. Sowerby III, 1882	<i>Conus (Dauciconus)</i>
<i>dictator</i> (Melvill, 1898)	<i>Conasprella (Fusiconus)</i>
<i>diegoi</i> (Cossignani, 2014)	<i>Conus (Lautoconus)</i>
<i>dieteri</i> (Moolenbeek, Zandbergen & Bouchet, 2008)	<i>Conasprella (Fusiconus)</i>
<i>diminutus</i> Trovão & Rolán, 1986	<i>Conus (Lautoconus)</i>
<i>dispar</i> G. B. Sowerby I, 1833	<i>Conus (Dauciconus)</i>
<i>distans</i> Hwass in Bruguière, 1792	<i>Conus (Fraterconus)</i>
<i>dominicanus</i> Hwass in Bruguière, 1792	<i>Conus (Stephanoconus)</i>
<i>dondani</i> (Kosuge, 1981)	<i>Profundiconus</i>
<i>donnae</i> Petuch, 1998	<i>Conus (Dauciconus)</i>
<i>dorotheae</i> Monnier & Limpalaër, 2010	<i>Conus (Lautoconus)</i>
<i>dorrensis</i> Péron, 1807	<i>Conus (Virroconus)</i>
<i>duffy</i> Petuch, 1992	<i>Conus (Stephanoconus)</i>
<i>dusaveli</i> (H. Adams, 1872)	<i>Conus (Textilia)</i>
<i>ebraeus</i> Linnaeus, 1758	<i>Conus (Virroconus)</i>
<i>eburneus</i> Hwass in Bruguière, 1792	<i>Conus (Tesselliconus)</i>
<i>echinophilus</i> (Petuch, 1975)	<i>Conus (Lautoconus)</i>
<i>echo</i> Lauer, 1989	<i>Conus (Darioconus)</i>
<i>edaphus</i> Dall, 1910	<i>Conus (Tesselliconus)</i>
<i>ednae</i> (Petuch, 2013)	<i>Conus (Sandericonus)</i>
<i>edwardpauli</i> Petuch, 1998	<i>Conus (Dauciconus)</i>
<i>eldredi</i> Morrison, 1955	<i>Conus (Gastridium)</i>
<i>elegans</i> (G. B. Sowerby III, 1895)	<i>Conasprella (Fusiconus)</i>
<i>eleutheraensis</i> (Petuch, 2013)	<i>Conus (Dauciconus)</i>
<i>elokismenos</i> (Kilburn, 1975)	<i>Conasprella (Fusiconus)</i>
<i>emaciatu</i> Reeve, 1849	<i>Conus (Virgiconus)</i>
<i>emarginata</i> (Reeve, 1844)	<i>Conasprella (Kohniconus)</i>
<i>emersoni</i> (G. D. Hanna, 1963)	<i>Profundiconus</i>
<i>empressae</i> Lorenz, 2001	<i>Conus (Splinoconus)</i>
<i>encaustus</i> Kiener, 1845	<i>Conus (Virroconus)</i>
<i>episcopatus</i> da Motta, 1982	<i>Conus (Darioconus)</i>
<i>ericomnieri</i> (Petuch & R. F. Myers, 2014)	<i>Conasprella (Ximeniconus)</i>
<i>ermineus</i> Born, 1778	<i>Conus (Chelyconus)</i>
<i>ernesti</i> Petuch, 1990	<i>Conus (Dauciconus)</i>
<i>erythraeensis</i> Reeve, 1843	<i>Conus (Phasmoconus)</i>
<i>escondidai</i> Poppe & Tagaro, 2005	<i>Conus (Lividoconus)</i>
<i>estivali</i> Moolenbeek & Richard, 1995	<i>Conus (Klemaeconus)</i>
<i>euconata</i> (G.B. Sowerby III, 1903)	<i>Conasprella (Conasprella)</i>
<i>eugrammata</i> (Bartsch & Rehder, 1943)	<i>Conasprella (Conasprella)</i>
<i>evansi</i> Bondarev, 2001	<i>Conus (Phasmoconus)</i>
<i>eversoni</i> Petuch, 1987	<i>Conus (Attenuiconus)</i>
<i>evorai</i> Monteiro, Fernandes & Rolán, 1995	<i>Conus (Lautoconus)</i>
<i>excelsus</i> G. B. Sowerby III, 1908	<i>Conus (Turriconus)</i>
<i>exiguus</i> Lamarck, 1810	<i>Conus (Phasmoconus)</i>
<i>eximius</i> Reeve, 1849	<i>Conus (Lividoconus)</i>
<i>explorator</i> Vink, 1990	<i>Conus (Dauciconus)</i>
<i>fantasmalis</i> Rolán, 1990	<i>Conus (Lautoconus)</i>
<i>felitae</i> Rolán, 1990	<i>Conus (Lautoconus)</i>
<i>felix</i> Fenzan, 2012	<i>Conus (Plicaustraconus)</i>
<i>fenzani</i> (Petuch & Sargent, 2011)	<i>Conasprella (Kohniconus)</i>
<i>fergusoni</i> G. B. Sowerby II, 1873	<i>Conus (Virroconus)</i>
<i>fernandesi</i> Tenorio, Afonso & Rolán, 2008	<i>Conus (Lautoconus)</i>
<i>ferrugineus</i> Hwass in Bruguière, 1792	<i>Conus (Strategoconus)</i>
<i>fiadeiroi</i> (Tenorio, Afonso, Cunha & Rolán, 2014)	<i>Conus (Lautoconus)</i>
<i>figulinus</i> Linnaeus, 1758	<i>Conus (Dendroconus)</i>

Continued

Appendix Table 1. *Continued*

Species	Genus (Subgenus)
<i>fijiensis</i> (Moolenbeek, Röckel & Bouchet, 2008)	<i>Conasprella (Fusiconus)</i>
<i>fijisulcatus</i> Moolenbeek, Röckel & Bouchet, 2008	<i>Conus (Asprella)</i>
<i>filmeri</i> Rolán & Röckel, 2000	<i>Conus (Lautoconus)</i>
<i>fiscoederi</i> Röckel & da Motta, 1983	<i>Conus (Pionoconus)</i>
<i>flamingo</i> Petuch, 1980	<i>Conus (Dauciconus)</i>
<i>flammeacolor</i> Petuch, 1992	<i>Conus (Dauciconus)</i>
<i>flavescens</i> G. B. Sowerby I, 1834	<i>Conus (Dauciconus)</i>
<i>flavidus</i> Lamarck, 1810	<i>Conus (Virgiconus)</i>
<i>flavus</i> Röckel, 1985	<i>Conus (Phasmoconus)</i>
<i>flavusalbus</i> Rolán & Röckel, 2000	<i>Conus (Lautoconus)</i>
<i>floccatus</i> G. B. Sowerby I, 1841	<i>Conus (Pionoconus)</i>
<i>floridulus</i> A. Adams & Reeve, 1848	<i>Conus (Lividoconus)</i>
<i>fluviamaris</i> (Petuch & Sargent, 2011)	<i>Conasprella (Ximeniconus)</i>
<i>fontonae</i> Rolán & Trovão, 1990	<i>Conus (Lautoconus)</i>
<i>fragilissimus</i> Petuch, 1979	<i>Conus (Gastridium)</i>
<i>franciscoi</i> Rolán & Röckel, 2000	<i>Conus (Lautoconus)</i>
<i>fraussenii</i> (Tenorio & Poppe, 2004)	<i>Profundiconus</i>
<i>frigidus</i> Reeve, 1848	<i>Conus (Virgiconus)</i>
<i>fulmen</i> Reeve, 1843	<i>Conus (Pionoconus)</i>
<i>fumigatus</i> Hwass in Bruguière, 1792	<i>Conus (Splinoconus)</i>
<i>furnae</i> Rolán, 1990	<i>Conus (Lautoconus)</i>
<i>furvus</i> Reeve, 1843	<i>Conus (Calibanus)</i>
<i>fusciflavus</i> Röckel, Rolán & Monteiro, 1980	<i>Conus (Lautoconus)</i>
<i>fuscolineatus</i> G. B. Sowerby III, 1905	<i>Conus (Lautoconus)</i>
<i>gabelishi</i> da Motta & Ninomiya, 1982	<i>Conus (Floraconus)</i>
<i>garciai</i> da Motta, 1982	<i>Conus (Dauciconus)</i>
<i>garywilsoni</i> Lorenz & Morrison, 2004	<i>Conus (Lividoconus)</i>
<i>gauguini</i> Richard & Salvat, 1973	<i>Conus (Pionoconus)</i>
<i>generalis</i> Linnaeus, 1767	<i>Conus (Strategoconus)</i>
<i>genuanus</i> Linnaeus, 1758	<i>Conus (Kalloconus)</i>
<i>geographus</i> Linnaeus, 1758	<i>Conus (Gastridium)</i>
<i>gibsonsmithorum</i> Petuch, 1986	<i>Conus (Dauciconus)</i>
<i>gigasulcatus</i> Moolenbeek, Röckel & Bouchet, 2008	<i>Conus (Asprella)</i>
<i>gilberti</i> (Bozzetti, 2012)	<i>Conus (Splinoconus)</i>
<i>gilvus</i> Reeve, 1849	<i>Conus (Phasmoconus)</i>
<i>giorossii</i> Bozzetti, 2005	<i>Conus (Phasmoconus)</i>
<i>gladiator</i> Broderip, 1833	<i>Conus (Monteiroconus)</i>
<i>glans</i> Hwass in Bruguière, 1792	<i>Conus (Leporiconus)</i>
<i>glaucus</i> Linnaeus, 1758	<i>Conus (Dendroconus)</i>
<i>glenni</i> Petuch, 1993	<i>Conus (Atlanticonus)</i>
<i>glicksteini</i> Petuch, 1987	<i>Conus (Dauciconus)</i>
<i>gloriakiensis</i> Kuroda & Itô, 1961	<i>Conus (Splinoconus)</i>
<i>gloriamaris</i> Chemnitz, 1777	<i>Conus (Cylinder)</i>
<i>glorioceanus</i> Poppe & Tagaro, 2009	<i>Conus (Cylinder)</i>
<i>goajira</i> Petuch, 1992	<i>Conus (Dauciconus)</i>
<i>gondwanensis</i> Röckel & Moolenbeek, 1995	<i>Conus (Turriconus)</i>
<i>gonsaloi</i> (Afonso & Tenorio, 2014)	<i>Conus (Lautoconus)</i>
<i>gordyi</i> (Röckel & Bondarev, 2000)	<i>Conasprella (Conasprella)</i>
<i>goudeyi</i> (Monnier & Limpalaër, 2012)	<i>Conus (Phasmoconus)</i>
<i>gradatulus</i> Weinkauff, 1875	<i>Conus (Sciteconus)</i>
<i>gradatus</i> W. Wood, 1828	<i>Conus (Dauciconus)</i>
<i>grahami</i> Röckel, Cosel & Burnay, 1980	<i>Conus (Lautoconus)</i>
<i>granarius</i> Kiener, 1847	<i>Conus (Stephanoconus)</i>
<i>grangeri</i> G. B. Sowerby III, 1900	<i>Conus (Asprella)</i>
<i>granulatus</i> Linnaeus, 1758	<i>Conus (Atlanticonus)</i>

Continued

Appendix Table 1. *Continued*

Species	Genus (Subgenus)
<i>granum</i> Röckel & Fischöder, 1985	<i>Conus (Leporiconus)</i>
<i>gratacapii</i> Pilsbry, 1904	<i>Conus (Turriconus)</i>
<i>grohi</i> (Tenorio & Poppe, 2004)	<i>Conasprella</i> (<i>Endemoconus</i>)
<i>guanche</i> Lauer, 1993	<i>Conus (Lautoconus)</i>
<i>gubernator</i> Hwass in Bruguière, 1792	<i>Conus (Pionoconus)</i>
<i>guidopoppei</i> (G. Raybaudi Massilia, 2005)	<i>Conasprella (Fusiconus)</i>
<i>guinaicus</i> Hwass in Bruguière, 1792	<i>Conus (Lautoconus)</i>
<i>guyanensis</i> (Van Mol, 1973)	<i>Conasprella (Dalliconus)</i>
<i>habui</i> Lan, 2002	<i>Conus (Phasmoconus)</i>
<i>hamamotoi</i> Yoshiba & Koyama, 1984	<i>Conus (Splinoconus)</i>
<i>hamanni</i> Fainzilber & Mienis, 1986	<i>Conus (Leptoconus)</i>
<i>hanshassi</i> (Lorenz & Barbier, 2012)	<i>Conus (Strategoconus)</i>
<i>harasewychi</i> Petuch, 1987	<i>Conus (Dauciconus)</i>
<i>harlandi</i> Petuch, 1987	<i>Conus (Stephanoconus)</i>
<i>havanensis</i> Aguayo & Pérez Farfante, 1947	<i>Conus (Dauciconus)</i>
<i>helgae</i> Blöcher, 1992	<i>Conus (Asprella)</i>
<i>henckesi</i> (Coltro, 2004)	<i>Conasprella (Ximeniconus)</i>
<i>hennequini</i> Petuch, 1993	<i>Conus (Dauciconus)</i>
<i>henriquei</i> (Petuch & R. F. Myers, 2014)	<i>Conasprella (Coltroconus)</i>
<i>herndli</i> (Petuch & R. F. Myers, 2014)	<i>Conasprella (Ximeniconus)</i>
<i>hieroglyphus</i> Duclos, 1833	<i>Conus (Ductoconus)</i>
<i>hilli</i> Petuch, 1990	<i>Conus (Dauciconus)</i>
<i>hirasei</i> (Kuroda, 1956)	<i>Conus (Klemaeconus)</i>
<i>hivanus</i> Moolenbeek, Zandbergen & Bouchet, 2008	<i>Conus (Strategoconus)</i>
<i>honkeri</i> Petuch, 1988	<i>Conus (Attenuiconus)</i>
<i>honkerorum</i> (Petuch & R. F. Myers, 2014)	<i>Conus (Dauciconus)</i>
<i>hopwoodi</i> (Tomlin, 1937)	<i>Conasprella (Fusiconus)</i>
<i>howelli</i> (Iredale, 1929)	<i>Conasprella</i> (<i>Endemoconus</i>)
<i>hyaena</i> Hwass in Bruguière, 1792	<i>Conus (Rhizoconus)</i>
<i>hybridus</i> Kiener, 1847	<i>Conus (Lautoconus)</i>
<i>hypochlorus</i> (Tomlin, 1937)	<i>Conasprella (Fusiconus)</i>
<i>iansa</i> (Petuch, 1979)	<i>Conasprella (Coltroconus)</i>
<i>ichinoseana</i> (Kuroda, 1956)	<i>Conasprella (Fusiconus)</i>
<i>ignotus</i> Cargile, 1998	<i>Conus (Kellyconus)</i>
<i>ikedai</i> (Ninomiya, 1987)	<i>Profundiconus</i>
<i>immelmani</i> Korn, 1998	<i>Conus (Leptoconus)</i>
<i>imperialis</i> Linnaeus, 1758	<i>Conus (Stephanoconus)</i>
<i>inconstans</i> E. A. Smith, 1877	<i>Conus (Dauciconus)</i>
<i>infinitus</i> Rolán, 1990	<i>Conus (Lautoconus)</i>
<i>infrenatus</i> Reeve, 1848	<i>Conus (Sciteconus)</i>
<i>inscriptus</i> Reeve, 1843	<i>Conus (Phasmoconus)</i>
<i>insculpta</i> (Kiener, 1847)	<i>Conasprella (Fusiconus)</i>
<i>iodostoma</i> Reeve, 1843	<i>Conus (Asprella)</i>
<i>ione</i> (Fulton, 1938)	<i>Conasprella</i> (<i>Endemoconus</i>)
<i>irregularis</i> G. B. Sowerby II, 1858	<i>Conus (Lautoconus)</i>
<i>isabelarum</i> Tenorio & Afonso, 2004	<i>Conus (Lautoconus)</i>
<i>jacarusoi</i> Petuch, 1998	<i>Conus (Dauciconus)</i>
<i>janowskyae</i> (Tucker & Tenorio, 2011)	<i>Conasprella (Kohniconus)</i>
<i>janus</i> Hwass in Bruguière, 1792	<i>Conus (Phasmoconus)</i>
<i>jaspidea</i> (Gmelin, 1791)	<i>Conasprella (Ximeniconus)</i>
<i>jeanmartini</i> (G. Raybaudi Massilia, 1992)	<i>Profundiconus</i>
<i>jickelii</i> Weinkauff, 1873	<i>Conus (Phasmoconus)</i>
<i>jolivetii</i> (Moolenbeek, Röckel & Bouchet, 2008)	<i>Conasprella (Fusiconus)</i>

Continued

Appendix Table 1. *Continued*

Species	Genus (Subgenus)
<i>orioi</i> (Petuch, 2013)	<i>Conus (Dauciconus)</i>
<i>josephinae</i> Rolán, 1980	<i>Conus (Lautoconus)</i>
<i>joserchoi</i> (Cossignani, 2014)	<i>Conus (Lautoconus)</i>
<i>jourdani</i> da Motta, 1984	<i>Conus (Lautoconus)</i>
<i>jucundus</i> G. B. Sowerby III, 1887	<i>Conus (Dauciconus)</i>
<i>judaes</i> Bergh, 1895	<i>Conus (Virroconus)</i>
<i>julieandreae</i> Cargile, 1995	<i>Conus (Stephanoconus)</i>
<i>julii</i> Lienard, 1870	<i>Conus (Textilia)</i>
<i>kaiserae</i> (Tenorio, Tucker & Chaney, 2012)	<i>Conus (Dauciconus)</i>
<i>kalafuti</i> da Motta, 1987	<i>Conus (Dauciconus)</i>
<i>kanakinus</i> (Richard, 1983)	<i>Profundiconus</i>
<i>kawamurai</i> Habe, 1962	<i>Conus (Leptoconus)</i>
<i>kermadecensis</i> Iredale, 1913	<i>Conus (Lividoconus)</i>
<i>kersteni</i> Tenorio, Afonso & Rolán, 2008	<i>Conus (Lautoconus)</i>
<i>kerstitchi</i> Walls, 1978	<i>Conus (Dauciconus)</i>
<i>kevani</i> Petuch, 1987	<i>Conus (Dauciconus)</i>
<i>kiicumulus</i> Azuma, 1982	<i>Conus (Phasmoconus)</i>
<i>kimioi</i> (Habe, 1965)	<i>Conasprella</i> (<i>Boucheticonus</i>)
<i>kinoshitai</i> Kuroda, 1956	<i>Conus (Afonsoconus)</i>
<i>kintoki</i> Habe & Kosuge, 1970	<i>Conus (Virgiconus)</i>
<i>kirkandersi</i> Petuch, 1987	<i>Conus (Dauciconus)</i>
<i>klemae</i> (Cotton, 1953)	<i>Conus (Klemaeconus)</i>
<i>kohni</i> (McLean & Nybakken, 1979)	<i>Conasprella (Kohniconus)</i>
<i>korni</i> G. Raybaudi Massilia, 1993	<i>Conus (Pseudolilliconus)</i>
<i>kostini</i> Filmer, Monteiro, Lorenz & Verdasca, 2012	<i>Conus (Embrikena)</i>
<i>koukae</i> (Monnier, Limpalaër & Robin, 2013)	<i>Conus (Pionoconus)</i>
<i>kremerorum</i> Petuch, 1988	<i>Conus (Dauciconus)</i>
<i>kuiperi</i> Moolenbeek, 2006	<i>Conus (Pseudolilliconus)</i>
<i>kulkulcan</i> Petuch, 1980	<i>Conus (Dauciconus)</i>
<i>kuroharai</i> (Habe, 1965)	<i>Conus (Phasmoconus)</i>
<i>lamberti</i> Souverbie, 1877	<i>Conus (Darioconus)</i>
<i>lani</i> (Crandall, 1979)	<i>Profundiconus</i>
<i>largilliertii</i> Kiener, 1847	<i>Conus (Dauciconus)</i>
<i>laterculatus</i> G. B. Sowerby II, 1870	<i>Conus (Phasmoconus)</i>
<i>laueri</i> (Monnier & Limpalaër, 2013)	<i>Conus (Darioconus)</i>
<i>lecourtorum</i> (Lorenz, 2011)	<i>Conus (Virroconus)</i>
<i>leekremeri</i> Petuch, 1987	<i>Conus (Dauciconus)</i>
<i>legatus</i> Lamarck, 1810	<i>Conus (Cylinder)</i>
<i>lemniscatus</i> Reeve, 1849	<i>Conus (Lamniconus)</i>
<i>lenavati</i> da Motta & Röckel, 1982	<i>Conus (Splinoconus)</i>
<i>lenhilli</i> (Cargile, 1998)	<i>Conasprella (Dalliconus)</i>
<i>lentiginosa</i> (Reeve, 1844)	<i>Conasprella (Fusiconus)</i>
<i>leobottonii</i> Lorenz, 2006	<i>Conus (Pionoconus)</i>
<i>leobrerae</i> da Motta & Martin, 1982	<i>Conus (Phasmoconus)</i>
<i>leopardus</i> (Röding, 1798)	<i>Conus (Lithoconus)</i>
<i>levis</i> (Bozzetti, 2012)	<i>Conus (Pseudolilliconus)</i>
<i>levistimpsoni</i> (Tucker, 2013)	<i>Conus (Dauciconus)</i>
<i>levitani</i> (Tucker, Tenorio & Chaney, 2011)	<i>Conus (Darioconus)</i>
<i>lienardi</i> Bernardi & Crosse, 1861	<i>Conus (Phasmoconus)</i>
<i>lightbourni</i> Petuch, 1986	<i>Conus (Bermudaconus)</i>
<i>limpusi</i> Röckel & Korn, 1990	<i>Conus (Eremiconus)</i>
<i>lindae</i> Petuch, 1987	<i>Conus (Lindaconus)</i>
<i>lineopunctatus</i> Kaicher, 1977	<i>Conus (Lautoconus)</i>
<i>lischkeanus</i> Weinkauff, 1875	<i>Conus (Lividoconus)</i>
<i>litoglyphus</i> Hwass in Bruguière, 1792	<i>Conus (Strategoconus)</i>

Continued

CLASSIFICATION OF CONE SNAILS

Appendix Table 1. *Continued*

Species	Genus (Subgenus)
<i>litteratus</i> Linnaeus, 1758	<i>Conus (Elisaconus)</i>
<i>lividus</i> Hwass in Bruguière, 1792	<i>Conus (Lividiconus)</i>
<i>lizardensis</i> Crosse, 1865	<i>Conus (Eremiconus)</i>
<i>lizarum</i> (Raybaudi Massilia & da Motta, 1992)	<i>Conasprella (Fusiconus)</i>
<i>lobitensis</i> Kaicher, 1977	<i>Conus (Lautoconus)</i>
<i>locumtenens</i> Blumenbach, 1791	<i>Conus (Leptoconus)</i>
<i>lohri</i> Kilburn, 1972	<i>Conus (Darioconus)</i>
<i>longilineus</i> Röckel, Rolán & Monteiro, 1980	<i>Conus (Lautoconus)</i>
<i>longurionis</i> (Kiener, 1847)	<i>Conasprella (Fusiconus)</i>
<i>lorenzi</i> Monnier & Limpalaër, 2012	<i>Conasprella (Conasprella)</i>
<i>loyaltiensis</i> (Röckel & Moolenbeek, 1995)	<i>Profundiconus</i>
<i>lozeti</i> Richard, 1980	<i>Conus (Plicaustraconus)</i>
<i>lucasi</i> (Bozzetti, 2010)	<i>Conus (Textilia)</i>
<i>lucaya</i> Petuch, 2000	<i>Conus (Dauciconus)</i>
<i>luciae</i> Moolenbeek, 1986	<i>Conus (Turriconus)</i>
<i>lucidus</i> (W. Wood, 1828)	<i>Conasprella (Ximeniconus)</i>
<i>lugubris</i> Reeve, 1849	<i>Conus (Lautoconus)</i>
<i>luquei</i> Rolán & Trovão, 1990	<i>Conus (Lautoconus)</i>
<i>luteus</i> G. B. Sowerby I, 1833	<i>Conus (Leporiconus)</i>
<i>lynceus</i> G. B. Sowerby II, 1858	<i>Conus (Phasmoconus)</i>
<i>maculiferus</i> G. B. Sowerby I, 1833	<i>Conus (Dauciconus)</i>
<i>madagascariensis</i> G. B. Sowerby II, 1858	<i>Conus (Darioconus)</i>
<i>madecassinus</i> (Bozzetti, 2012)	<i>Conus (Phasmoconus)</i>
<i>magellanicus</i> Hwass in Bruguière, 1792	<i>Conus (Dauciconus)</i>
<i>magnificus</i> Reeve, 1843	<i>Conus (Darioconus)</i>
<i>magnottei</i> Petuch, 1987	<i>Conus (Dauciconus)</i>
<i>magus</i> Linnaeus, 1758	<i>Conus (Pionoconus)</i>
<i>mahogani</i> (Reeve, 1843)	<i>Conasprella (Ximeniconus)</i>
<i>maioensis</i> Trovão, Rolán & Félix-Alves, 1990	<i>Conus (Lautoconus)</i>
<i>malacanus</i> Hwass in Bruguière, 1792	<i>Conus (Splinoconus)</i>
<i>maldivus</i> Hwass in Bruguière, 1792	<i>Conus (Strategoconus)</i>
<i>mappa</i> [Lightfoot], 1786	<i>Conus (Stephanoconus)</i>
<i>marchionatus</i> Hinds, 1843	<i>Conus (Eugeniconus)</i>
<i>mariae</i> Rehder & Wilson, 1975	<i>Conus (Phasmoconus)</i>
<i>marmoreus</i> Linnaeus, 1758	<i>Conus (Conus)</i>
<i>martensi</i> E. A. Smith, 1884	<i>Conus (Splinoconus)</i>
<i>martinianus</i> Reeve, 1844	<i>Conus (Phasmoconus)</i>
<i>maya</i> (Petuch & Sargent, 2011)	<i>Conus (Dauciconus)</i>
<i>mazei</i> (Deshayes, 1874)	<i>Conasprella (Dalliconus)</i>
<i>mcbridei</i> Lorenz, 2005	<i>Conus (Harmoniconus)</i>
<i>mcgintyi</i> (Pilsbry, 1955)	<i>Conasprella (Dalliconus)</i>
<i>medoci</i> Lorenz, 2004	<i>Conus (Dendroconus)</i>
<i>melissae</i> Tenorio, Afonso & Rolán, 2008	<i>Conus (Lautoconus)</i>
<i>melvilli</i> G. B. Sowerby III, 1879	<i>Conus (Quasiconus)</i>
<i>memiae</i> (Habe & Kosuge, 1970)	<i>Conasprella (Conasprella)</i>
<i>mercator</i> Linnaeus, 1758	<i>Conus (Lautoconus)</i>
<i>messiasi</i> Rolán & Fernandes, 1990	<i>Conus (Lautoconus)</i>
<i>micropunctatus</i> Rolán & Röckel, 2000	<i>Conus (Lautoconus)</i>
<i>miles</i> Linnaeus, 1758	<i>Conus (Rhizoconus)</i>
<i>milesi</i> E. A. Smith, 1887	<i>Conus (Turriconus)</i>
<i>miliaris</i> Hwass in Bruguière, 1792	<i>Conus (Virroconus)</i>
<i>milneedwardsi</i> Jousseau, 1894	<i>Conus (Leptoconus)</i>
<i>mindana</i> (Hwass in Bruguière, 1792)	<i>Conasprella (Ximeniconus)</i>
<i>miniexcelsus</i> Olivera & Biggs, 2010	<i>Conus (Turriconus)</i>
<i>minnamurra</i> (Garrard, 1961)	<i>Conus (Eremiconus)</i>
<i>miruchae</i> Röckel, Rolán & Monteiro, 1980	<i>Conus (Lautoconus)</i>
<i>mitratus</i> Hwass in Bruguière, 1792	<i>Conus (Turriconus)</i>

Continued

Appendix Table 1. *Continued*

Species	Genus (Subgenus)
<i>moluccensis</i> Küster, 1838	<i>Conus (Phasmoconus)</i>
<i>monachus</i> Linnaeus, 1758	<i>Conus (Pionoconus)</i>
<i>moncuri</i> Filmer, 2005	<i>Conus (Elisaconus)</i>
<i>monile</i> Hwass in Bruguière, 1792	<i>Conus (Strategoconus)</i>
<i>monilifer</i> Broderip, 1833	<i>Conus (Dauciconus)</i>
<i>moolenbeeki</i> Filmer, 2011	<i>Conus (Phasmoconus)</i>
<i>mordeirae</i> Rolán & Trovão, 1990	<i>Conus (Lautoconus)</i>
<i>moreleti</i> Crosse, 1858	<i>Conus (Virgiconus)</i>
<i>morrisoni</i> G. Raybaudi Massilia, 1991	<i>Conus (Pionoconus)</i>
<i>mozambicus</i> Hwass in Bruguière, 1792	<i>Conus (Floraconus)</i>
<i>mucronatus</i> Reeve, 1843	<i>Conus (Phasmoconus)</i>
<i>mulderi</i> Fulton, 1936	<i>Conus (Phasmoconus)</i>
<i>muriculatus</i> G. B. Sowerby I, 1833	<i>Conus (Lividiconus)</i>
<i>mus</i> Hwass in Bruguière, 1792	<i>Conus (Monteiroconus)</i>
<i>musicus</i> Hwass in Bruguière, 1792	<i>Conus (Harmoniconus)</i>
<i>mustelinus</i> Hwass in Bruguière, 1792	<i>Conus (Rhizoconus)</i>
<i>namocanus</i> Hwass in Bruguière, 1792	<i>Conus (Rhizoconus)</i>
<i>nanus</i> G. B. Sowerby I, 1833	<i>Conus (Harmoniconus)</i>
<i>naranjus</i> Trovão, 1975	<i>Conus (Lautoconus)</i>
<i>natalaurantius</i> (S. G. Veldsman, 2013)	<i>Conus (Darioconus)</i>
<i>natalis</i> G. B. Sowerby II, 1858	<i>Conus (Leptoconus)</i>
<i>navarro</i> Rolán, 1986	<i>Conus (Lautoconus)</i>
<i>negroides</i> Kaicher, 1977	<i>Conus (Lautoconus)</i>
<i>neptunus</i> Reeve, 1843	<i>Conus (Phasmoconus)</i>
<i>niederhoferi</i> (Monnier, Limpalaër & Lorenz, 2012)	<i>Conus (Phasmoconus)</i>
<i>nielsenae</i> Marsh, 1962	<i>Conus (Splinoconus)</i>
<i>nigromaculatus</i> Röckel & Moolenbeek, 1992	<i>Conus (Pionoconus)</i>
<i>nigropunctatus</i> G. B. Sowerby II, 1858	<i>Conus (Pionoconus)</i>
<i>nimbosus</i> Hwass in Bruguière, 1792	<i>Conus (Phasmoconus)</i>
<i>nobilis</i> Linnaeus, 1758	<i>Conus (Eugeniconus)</i>
<i>nobrei</i> Trovão, 1975	<i>Conus (Lautoconus)</i>
<i>nocturnus</i> [Lightfoot], 1786	<i>Conus (Conus)</i>
<i>nodulosus</i> G. B. Sowerby II, 1864	<i>Conus (Cylinder)</i>
<i>nucleus</i> Reeve, 1848	<i>Conus (Splinoconus)</i>
<i>nussatella</i> Linnaeus, 1758	<i>Conus (Hermes)</i>
<i>nux</i> Broderip, 1833	<i>Conus (Harmoniconus)</i>
<i>nybakkeni</i> (Tenorio, Tucker & Chaney, 2012)	<i>Conus (Dauciconus)</i>
<i>obscurus</i> G. B. Sowerby I, 1833	<i>Conus (Gastridium)</i>
<i>ochroleucus</i> Gmelin, 1791	<i>Conus (Phasmoconus)</i>
<i>ogum</i> (Petuch & R. F. Myers, 2014)	<i>Conasprella (Ximeniconus)</i>
<i>oishii</i> (Shikama, 1977)	<i>Conus (Phasmoconus)</i>
<i>olgiatii</i> Bozzetti, 2007	<i>Conus (Splinoconus)</i>
<i>omaria</i> Hwass in Bruguière, 1792	<i>Conus (Darioconus)</i>
<i>orbigny</i> (Audouin, 1831)	<i>Conasprella (Fusiconus)</i>
<i>orion</i> Broderip, 1833	<i>Conus (Dauciconus)</i>
<i>ortneri</i> Petuch, 1998	<i>Conus (Dauciconus)</i>
<i>ostrinus</i> (Tucker & Tenorio, 2011)	<i>Conus (Dauciconus)</i>
<i>otohimeae</i> (Kuroda & Itô, 1961)	<i>Conasprella (Conasprella)</i>
<i>pacei</i> (Petuch, 1987)	<i>Conasprella (Dalliconus)</i>
<i>pacificus</i> (Moolenbeek & Röckel, 1996)	<i>Profundiconus</i>
<i>pagoda</i> (Kiener, 1847)	<i>Conasprella (Conasprella)</i>
<i>papilliferus</i> G. B. Sowerby I, 1834	<i>Conus (Floraconus)</i>
<i>papuensis</i> Coomans & Moolenbeek, 1982	<i>Conus (Splinoconus)</i>
<i>paraguana</i> Petuch, 1987	<i>Conus (Dauciconus)</i>
<i>parascalaris</i> Petuch, 1987	<i>Conus (Dauciconus)</i>
<i>parius</i> Reeve, 1844	<i>Conus (Phasmoconus)</i>

Continued

Appendix Table 1. *Continued*

Species	Genus (Subgenus)
<i>parvatus</i> Walls, 1979	<i>Conus (Harmoniconus)</i>
<i>paschalli</i> Petuch, 1998	<i>Conus (Dauciconus)</i>
<i>patae</i> Abbott, 1971	<i>Conus (Kellyconus)</i>
<i>patglicksteinae</i> Petuch, 1987	<i>Conus (Dauciconus)</i>
<i>patriceae</i> (Petuch & R. F. Myers, 2014)	<i>Conus (Lamniconus)</i>
<i>patricius</i> Hinds, 1843	<i>Conus (Pyruciconus)</i>
<i>paukstisi</i> (Tucker, Tenorio & Chaney, 2011)	<i>Conus (Harmoniconus)</i>
<i>paulae</i> Petuch, 1988	<i>Conus (Dauciconus)</i>
<i>pauperculus</i> G. B. Sowerby I, 1834	<i>Conus (Splinoconus)</i>
<i>peii</i> Moolenbeek, 1996	<i>Conus (Rhizoconus)</i>
<i>penchaszadehi</i> Petuch, 1986	<i>Conus (Dauciconus)</i>
<i>pennaceus</i> Born, 1778	<i>Conus (Darioconus)</i>
<i>pepeiu</i> (Moolenbeek, Zandbergen & Bouchet, 2008)	<i>Conasprella (Fusiconus)</i>
<i>pergrandis</i> (Iredale, 1937)	<i>Conus (Embrikena)</i>
<i>perplexa</i> (G. B. Sowerby II, 1857)	<i>Conasprella (Ximeniconus)</i>
<i>pertusus</i> Hwass in Bruguière, 1792	<i>Conus (Rhizoconus)</i>
<i>petergabrielii</i> Lorenz, 2006	<i>Conus (Phasmoconus)</i>
<i>philippii</i> Kiener, 1847	<i>Conus (Dauciconus)</i>
<i>pica</i> A. Adams & Reeve, 1848	<i>Conus (Phasmoconus)</i>
<i>pictus</i> Reeve, 1843	<i>Conus (Sciteconus)</i>
<i>pineai</i> Pin & Leung Tack, 1989	<i>Conus (Lautoconus)</i>
<i>planorbis</i> Born, 1778	<i>Conus (Strategoconus)</i>
<i>plinthis</i> Richard & Moolenbeek, 1988	<i>Conus (Klemaeconus)</i>
<i>polongimarumai</i> Kosuge, 1980	<i>Conus (Stephanoconus)</i>
<i>poormani</i> Berry, 1968	<i>Conus (Dauciconus)</i>
<i>poemskii</i> (Petuch & R. F. Myers, 2014)	<i>Conasprella (Ximeniconus)</i>
<i>portobeloensis</i> Petuch, 1990	<i>Conus (Dauciconus)</i>
<i>poulosi</i> Petuch, 1993	<i>Conus (Attenuiconus)</i>
<i>praecellens</i> A. Adams, 1855	<i>Conus (Turriconus)</i>
<i>pretiosus</i> G. Nevill & H. Nevill, 1874	<i>Conus (Phasmoconus)</i>
<i>primus</i> Röckel & Korn, 1990	<i>Conus (Phasmoconus)</i>
<i>princeps</i> Linnaeus, 1758	<i>Conus (Ductoconus)</i>
<i>priscal</i> (Bozzetti, 2012)	<i>Conus (Cylinder)</i>
<i>profundorum</i> (Kuroda, 1956)	<i>Profundiconus</i>
<i>proximus</i> G. B. Sowerby II, 1860	<i>Conus (Phasmoconus)</i>
<i>pseudaurantius</i> Vink & Cosel, 1985	<i>Conus (Stephanoconus)</i>
<i>pseudimperialis</i> Moolenbeek, Zandbergen & Bouchet, 2008	<i>Conus (Stephanoconus)</i>
<i>pseudocardinalis</i> Coltro, 2004	<i>Conus (Dauciconus)</i>
<i>pseudocuneolus</i> Röckel, Rolán & Monteiro, 1980	<i>Conus (Lautoconus)</i>
<i>pseudokimioi</i> da Motta & Martin, 1982	<i>Conasprella (Boucheticonus)</i>
<i>pseudonivifer</i> Monteiro, Tenorio & Poppe, 2004	<i>Conus (Kalloconus)</i>
<i>pseudorbigny</i> (Röckel & Lan, 1981)	<i>Conasprella (Fusiconus)</i>
<i>pulcher</i> [Lightfoot], 1786	<i>Conus (Kalloconus)</i>
<i>pulcherrima</i> Brazier, 1896	<i>INCERTAE SEDIS (Kenyonia)</i>
<i>pulicarius</i> Hwass in Bruguière, 1792	<i>Conus (Puncticulis)</i>
<i>punctulata</i> (Hwass in Bruguière, 1792)	<i>Conasprella (Ximeniconus)</i>
<i>purissimus</i> Filmer, 2011	<i>Conus (Splinoconus)</i>
<i>purpurascens</i> G. B. Sowerby I, 1833	<i>Conus (Chelyconus)</i>
<i>pusio</i> (Hwass in Bruguière, 1792)	<i>Conasprella (Ximeniconus)</i>
<i>queenslandis</i> da Motta, 1984	<i>Conus (Splinoconus)</i>
<i>quercinus</i> [Lightfoot], 1786	<i>Conus (Lividoconus)</i>
<i>quiquandoni</i> Lorenz & Barbier, 2008	<i>Conus (Phasmoconus)</i>

Continued

Appendix Table 1. *Continued*

Species	Genus (Subgenus)
<i>rachelae</i> (Petuch, 1988)	<i>Conasprella (Kohniconus)</i>
<i>radiatus</i> Gmelin, 1791	<i>Conus (Phasmoconus)</i>
<i>rainesae</i> (McGinty, 1953)	<i>Conasprella (Dalliconus)</i>
<i>ranonganus</i> da Motta, 1978	<i>Conus (Phasmoconus)</i>
<i>raulensis</i> (Powell, 1958)	<i>Conasprella (Endemoconus)</i>
<i>rattus</i> Hwass in Bruguière, 1792	<i>Conus (Rhizoconus)</i>
<i>raulsilvai</i> Rolán, Monteiro & Fernandes, 1998	<i>Conus (Lautoconus)</i>
<i>rawiensis</i> da Motta, 1978	<i>Conus (Rhizoconus)</i>
<i>recluzianus</i> Bernardi, 1853	<i>Conus (Splinoconus)</i>
<i>recurvus</i> Broderip, 1833	<i>Conus (Dauciconus)</i>
<i>reductaspiralis</i> Walls, 1979	<i>Conus (Splinoconus)</i>
<i>regius</i> Gmelin, 1791	<i>Conus (Stephanoconus)</i>
<i>regonae</i> Rolán & Trovão, 1990	<i>Conus (Lautoconus)</i>
<i>regularis</i> G. B. Sowerby I, 1833	<i>Conus (Dauciconus)</i>
<i>retifer</i> Menke, 1829	<i>Conus (Cylinder)</i>
<i>richardbinghami</i> Petuch, 1993	<i>Conus (Dauciconus)</i>
<i>richardsae</i> Röckel & Korn, 1992	<i>Conus (Splinoconus)</i>
<i>richeri</i> Richard & Moolenbeek, 1988	<i>Conus (Phasmoconus)</i>
<i>ritae</i> Petuch, 1995	<i>Conus (Atlanticonus)</i>
<i>rizali</i> Olivera & Biggs, 2010	<i>Conus (Turriconus)</i>
<i>roatanensis</i> (Petuch & Sargent, 2011)	<i>Conasprella (Ximeniconus)</i>
<i>roberti</i> (Richard, 2009)	<i>Conasprella (Dalliconus)</i>
<i>robini</i> (Limpalaër & Monnier, 2012)	<i>Conus (Pionoconus)</i>
<i>roeckeli</i> Rolán, 1980	<i>Conus (Lautoconus)</i>
<i>rolani</i> Röckel, 1986	<i>Conus (Asprella)</i>
<i>rosalindensis</i> Petuch, 1998	<i>Conus (Dauciconus)</i>
<i>rosemaryae</i> Petuch, 1990	<i>Conus (Dauciconus)</i>
<i>roseorapum</i> G. Raybaudi & da Motta, 1990	<i>Conus (Splinoconus)</i>
<i>rouxi</i> (Monnier, Limpalaër & Robin, 2013)	<i>Conus (Pionoconus)</i>
<i>royaikenii</i> (S. G. Veldsman, 2010)	<i>Conus (Leptoconus)</i>
<i>rufimaculosus</i> Macpherson, 1959	<i>Conus (Klemaeconus)</i>
<i>ruthae</i> (Monnier & Limpalaër, 2013)	<i>Conus (Splinoconus)</i>
<i>rutila</i> (Menke, 1843)	<i>Conasprella (Parviconus)</i>
<i>saecularis</i> (Melvill, 1898)	<i>Conasprella (Fusiconus)</i>
<i>sagei</i> (Korn & G. Raybaudi Massilia, 1993)	<i>Conasprella (Lilliconus)</i>
<i>sahlbergi</i> da Motta & Harland, 1986	<i>Conus (Dauciconus)</i>
<i>salletae</i> (Cossignani, 2014)	<i>Conus (Lautoconus)</i>
<i>salreiensis</i> Rolán, 1980	<i>Conus (Lautoconus)</i>
<i>salzmanni</i> G. Raybaudi Massilia & Rolán, 1997	<i>Conus (Phasmoconus)</i>
<i>sanderi</i> Wils & Moolenbeek, 1979	<i>Conus (Sandericonus)</i>
<i>sandwichensis</i> Walls, 1978	<i>Conus (Tesselliconus)</i>
<i>sanguineus</i> Kiener, 1850	<i>Conus (Stephanoconus)</i>
<i>sanguinolentus</i> Quoy & Gaimard, 1834	<i>Conus (Lividoconus)</i>
<i>santanaensis</i> (Afonso & Tenorio, 2014)	<i>Conus (Lautoconus)</i>
<i>santini</i> (Monnier & Limpalaër, 2014)	<i>Conus (Phasmoconus)</i>
<i>saragae</i> Rolán, 1986	<i>Conus (Lautoconus)</i>
<i>sargenti</i> (Petuch, 2013)	<i>Conasprella (Ximeniconus)</i>
<i>sartii</i> Korn, Niederhöfer & Blöcher, 2002	<i>Conus (Phasmoconus)</i>
<i>sauros</i> (Garcia, 2006)	<i>Conasprella (Dalliconus)</i>
<i>sazanka</i> Shikama, 1970	<i>Conus (Splinoconus)</i>
<i>scalaris</i> Valenciennes, 1832	<i>Conus (Dauciconus)</i>
<i>scalarispira</i> (Bozzetti, 2012)	<i>Conus (Pseudolilliconus)</i>
<i>scalarissimus</i> da Motta, 1988	<i>Conus (Dauciconus)</i>
<i>scalptus</i> Reeve, 1843	<i>Conus (Phasmoconus)</i>
<i>scaripha</i> (Dall, 1910)	<i>Conasprella (Kohniconus)</i>
<i>scopulicola</i> (Okutani, 1972)	<i>Profundiconus</i>

Continued

CLASSIFICATION OF CONE SNAILS

Appendix Table 1. *Continued*

Species	Genus (Subgenus)
<i>scopulorum</i> Van Mol, Tursch & Kempf, 1971	<i>Conus (Brasiliconus)</i>
<i>scottjordani</i> (Poppe, Monnier & Tagaro, 2012)	<i>Conus (Cylinder)</i>
<i>sculletti</i> Marsh, 1962	<i>Conus (Papyriconus)</i>
<i>sculpturatus</i> Röckel & da Motta, 1986	<i>Conus (Phasmoconus)</i>
<i>sennottorum</i> Rehder & Abbott, 1951	<i>Conus (Dauciconus)</i>
<i>serranegrae</i> Rolán, 1990	<i>Conus (Lautoconus)</i>
<i>sertacinctus</i> Röckel, 1986	<i>Conus (Phasmoconus)</i>
<i>shaskyi</i> (Tenorio, Tucker & Chaney, 2012)	<i>Conus (Dauciconus)</i>
<i>shikamai</i> Coomans, Moolenbeek & Wils, 1985	<i>Conus (Splinoconus)</i>
<i>sieboldii</i> (Reeve, 1848)	<i>Conasprella</i> <i>(Endemoconus)</i>
<i>silviae</i> (Cossignani, 2014)	<i>Conus (Lautoconus)</i>
<i>simonei</i> (Petuch & R. F. Myers, 2014)	<i>Conasprella (Ximeniconus)</i>
<i>skoglundae</i> (Tenorio, Tucker & Chaney, 2012)	<i>Conus (Dauciconus)</i>
<i>smirna</i> (Bartsch & Rehder, 1943)	<i>Profundiconus</i>
<i>sogodensis</i> (Poppe, Monnier & Tagaro, 2012)	<i>Conus (Phasmoconus)</i>
<i>solangeae</i> Bozzetti, 2004	<i>Conus (Textilia)</i>
<i>solidus</i> Gmelin, 1791	<i>Conus (Stephanoconus)</i>
<i>solomonensis</i> Delsaerd, 1992	<i>Conus (Phasmoconus)</i>
<i>somalica</i> (Bozzetti, 2013)	<i>Conasprella</i> <i>(Endemoconus)</i>
<i>spectrum</i> Linnaeus, 1758	<i>Conus (Phasmoconus)</i>
<i>sphacelatus</i> G. B. Sowerby I, 1833	<i>Conus (Dauciconus)</i>
<i>spiceri</i> Bartsch & Rehder, 1943	<i>Conus (Virgiconus)</i>
<i>spirofilis</i> (Habe & Kosuge, 1970)	<i>Conasprella</i> <i>(Endemoconus)</i>
<i>splendidulus</i> G. B. Sowerby I, 1833	<i>Conus (Strategoconus)</i>
<i>sponsalis</i> Hwass in Bruguière, 1792	<i>Conus (Harmoniconus)</i>
<i>spurius</i> Gmelin, 1791	<i>Conus (Lindaconus)</i>
<i>stahlschmidti</i> (Tenorio & Tucker, 2014)	<i>Profundiconus</i>
<i>stanfieldi</i> Petuch, 1998	<i>Conus (Dauciconus)</i>
<i>steamsii</i> (Conrad, 1869)	<i>Conasprella (Ximeniconus)</i>
<i>stercusmuscarum</i> Linnaeus, 1758	<i>Conus (Pionoconus)</i>
<i>stimpsoni</i> Dall, 1902	<i>Conus (Dauciconus)</i>
<i>stocki</i> (Coomans & Moolenbeek, 1990)	<i>Conasprella (Fusiconus)</i>
<i>stramineus</i> Lamarck, 1810	<i>Conus (Phasmoconus)</i>
<i>straturatus</i> G. B. Sowerby II, 1865	<i>Conus (Phasmoconus)</i>
<i>striatellus</i> Link, 1807	<i>Conus (Strategoconus)</i>
<i>striatus</i> Linnaeus, 1758	<i>Conus (Pionoconus)</i>
<i>striolatus</i> Kiener, 1848	<i>Conus (Pionoconus)</i>
<i>stupa</i> (Kuroda, 1956)	<i>Conus (Turriconus)</i>
<i>stupella</i> (Kuroda, 1956)	<i>Conus (Turriconus)</i>
<i>suduirauti</i> Raybaudi Massilia, 2004	<i>Conus (Strategoconus)</i>
<i>sugimotonis</i> Kuroda, 1928	<i>Conus (Klemaeconus)</i>
<i>sukhadwalai</i> Röckel & da Motta, 1983	<i>Conus (Splinoconus)</i>
<i>sulcatus</i> Hwass in Bruguière, 1792	<i>Conus (Asprella)</i>
<i>sulcocastaneus</i> Kosuge, 1981	<i>Conus (Asprella)</i>
<i>sunderlandi</i> Petuch, 1987	<i>Conus (Dauciconus)</i>
<i>suratensis</i> Hwass in Bruguière, 1792	<i>Conus (Dendroconus)</i>
<i>sutanorum</i> Moolenbeek, Röckel & Bouchet, 2008	<i>Conus (Phasmoconus)</i>
<i>suturatus</i> Reeve, 1844	<i>Conus (Tesselliconus)</i>
<i>swainsoni</i> Estival & Cosel, 1986	<i>Conus (Strategoconus)</i>
<i>swinneni</i> (Tenorio, Afonso, Cunha & Rolán, 2014)	<i>Conus (Lautoconus)</i>
<i>sydneyensis</i> G. B. Sowerby III, 1887	<i>Conus (Mamiconus)</i>
<i>tabidus</i> Reeve, 1844	<i>Conus (Monteiroconus)</i>

Continued

Appendix Table 1. *Continued*

Species	Genus (Subgenus)
<i>tacomae</i> Boyer & Pelorce, 2009	<i>Conus (Lautoconus)</i>
<i>taeniatus</i> Hwass in Bruguière, 1792	<i>Conus (Virroconus)</i>
<i>tagaruae</i> (Limpalaër & Monnier, 2013)	<i>Conus (Cylinder)</i>
<i>taslei</i> Kiener, 1850	<i>Conus (Lautoconus)</i>
<i>telatus</i> Reeve, 1848	<i>Conus (Cylinder)</i>
<i>tenuilineatus</i> Rolán & Röckel, 2001	<i>Conus (Lautoconus)</i>
<i>tenuistriatus</i> G. B. Sowerby II, 1858	<i>Conus (Leporoconus)</i>
<i>teodorae</i> Rolán & Fernandes, 1990	<i>Conus (Lautoconus)</i>
<i>teramachii</i> (Kuroda, 1956)	<i>Profundiconus</i>
<i>terebra</i> Born, 1778	<i>Conus (Virgiconus)</i>
<i>terryni</i> Tenorio & Poppe, 2004	<i>Conus (Pseudopterygia)</i>
<i>tessulatus</i> Born, 1778	<i>Conus (Tesselliconus)</i>
<i>tethys</i> (Petuch & Sargent, 2011)	<i>Conus (Virgiconus)</i>
<i>textile</i> Linnaeus, 1758	<i>Conus (Cylinder)</i>
<i>thalassiarachus</i> G. B. Sowerby I, 1834	<i>Conus (Calibanus)</i>
<i>theodori</i> Petuch, 2000	<i>Conus (Dauciconus)</i>
<i>theriaultii</i> (Petuch, 2013)	<i>Conus (Lindaconus)</i>
<i>thevenardensis</i> da Motta, 1987	<i>Conus (Splinoconus)</i>
<i>thomae</i> Gmelin, 1791	<i>Conus (Darioconus)</i>
<i>tiaratus</i> G. B. Sowerby I, 1833	<i>Conus (Virroconus)</i>
<i>tiki</i> (Moolenbeek, Zandbergen & Bouchet, 2008)	<i>Conasprella (Fusiconus)</i>
<i>timorensis</i> Hwass in Bruguière, 1792	<i>Conus (Textilia)</i>
<i>tinianus</i> Hwass in Bruguière, 1792	<i>Conus (Floraconus)</i>
<i>tirardi</i> Röckel & Moolenbeek, 1996	<i>Conus (Rhizoconus)</i>
<i>tisii</i> T. C. Lan, 1978	<i>Conus (Embrikena)</i>
<i>tornata</i> (G. B. Sowerby I, 1833)	<i>Conasprella (Ximeniconus)</i>
<i>tostesi</i> Petuch, 1986	<i>Conus (Lamniconus)</i>
<i>traceyi</i> (Tucker & Stahlschmidt, 2010)	<i>Conasprella</i> <i>(Pseudoconorbis)</i>
<i>traillii</i> A. Adams, 1855	<i>Conus (Pseudolilliconus)</i>
<i>traversiana</i> (E. A. Smith, 1875)	<i>Conasprella (Fusiconus)</i>
<i>trencarti</i> Nolf & Verstraeten, 2008	<i>Conus (Lautoconus)</i>
<i>tribblei</i> Walls, 1977	<i>Conus (Splinoconus)</i>
<i>trigonus</i> Reeve, 1848	<i>Conus (Plicaustraconus)</i>
<i>tristensis</i> Petuch, 1987	<i>Conus (Dauciconus)</i>
<i>trochulus</i> Reeve, 1844	<i>Conus (Kalloconus)</i>
<i>troendlei</i> Moolenbeek, Zandbergen & Bouchet, 2008	<i>Conus (Splinoconus)</i>
<i>trovaii</i> Rolán & Röckel, 2000	<i>Conus (Lautoconus)</i>
<i>tuberculosis</i> (Tomlin, 1937)	<i>Profundiconus</i>
<i>tulipa</i> Linnaeus, 1758	<i>Conus (Gastridium)</i>
<i>tuticorinensis</i> Röckel & Korn, 1990	<i>Conus (Quasiconus)</i>
<i>typhon</i> Kilburn, 1975	<i>Conus (Splinoconus)</i>
<i>unifasciatus</i> Kiener, 1850	<i>Conus (Lautoconus)</i>
<i>urashimanus</i> Kuroda & Itô, 1961	<i>Conus (Splinoconus)</i>
<i>vanhyningi</i> (Rehder, 1944)	<i>Conasprella (Ximeniconus)</i>
<i>vanvilstereni</i> (Moolenbeek & Zandbergen, 2013)	<i>Conus (Splinoconus)</i>
<i>vappereau</i> Monteiro, 2009	<i>Conus (Phasmoconus)</i>
<i>variegatus</i> Kiener, 1848	<i>Conus (Lautoconus)</i>
<i>varius</i> Linnaeus, 1758	<i>Conus (Strategoconus)</i>
<i>vaubani</i> (Röckel, Richard & Moolenbeek, 1995)	<i>Profundiconus</i>
<i>vautieri</i> Kiener, 1847	<i>Conus (Puncticulis)</i>
<i>vayssierei</i> Pallary, 1906	<i>Conus (Lautoconus)</i>
<i>velaensis</i> Petuch, 1993	<i>Conus (Dauciconus)</i>
<i>venezuelanus</i> Petuch, 1987	<i>Conus (Dauciconus)</i>

Continued

Appendix Table 1. *Continued*

Species	Genus (Subgenus)
<i>ventricosus</i> Gmelin, 1791	<i>Conus (Lautoconus)</i>
<i>venulatus</i> Hwass in Bruguière, 1792	<i>Conus (Kalloconus)</i>
<i>verdensis</i> Trovão, 1979	<i>Conus (Lautoconus)</i>
<i>vexillum</i> Gmelin, 1791	<i>Conus (Rhizoconus)</i>
<i>victoriae</i> Reeve, 1843	<i>Conus (Cylinder)</i>
<i>vicweei</i> Old, 1973	<i>Conus (Textilia)</i>
<i>vidua</i> Reeve, 1843	<i>Conus (Conus)</i>
<i>vikingorum</i> Petuch, 1993	<i>Conus (Dauciconus)</i>
<i>vilepinii</i> P. Fischer & Bernardi, 1857	<i>Conus (Dauciconus)</i>
<i>viminea</i> (Reeve, 1849)	<i>Conasprella (Fusiconus)</i>
<i>viola</i> Cernohorsky, 1977	<i>Conus (Spliniconus)</i>
<i>violaceus</i> Gmelin, 1791	<i>Conus (Virgiconus)</i>
<i>virgatus</i> Reeve, 1849	<i>Conus (Dauciconus)</i>
<i>virgo</i> Linnaeus, 1758	<i>Conus (Virgiconus)</i>
<i>visagenus</i> Kilburn, 1974	<i>Conus (Plicaustraconus)</i>
<i>visseri</i> Delsaerd, 1990	<i>Conus (Pseudolilliconus)</i>
<i>vittatus</i> Hwass in Bruguière, 1792	<i>Conus (Dauciconus)</i>
<i>voluminalis</i> Reeve, 1843	<i>Conus (Spliniconus)</i>
<i>vulcanus</i> Tenorio & Afonso, 2004	<i>Conus (Lautoconus)</i>
<i>wakayamaensis</i> (Kuroda, 1956)	<i>Conasprella (Conasprella)</i>
<i>wallacei</i> (Lorenz & Morrison, 2004)	<i>Conus (Pseudolilliconus)</i>
<i>wallangra</i> (Garrard, 1961)	<i>Conus (Plicaustraconus)</i>
<i>wandae</i> (Cossignani, 2014)	<i>Conus (Lautoconus)</i>
<i>wendrosi</i> (Tenorio & Afonso, 2013)	<i>Conasprella (Ximeniconus)</i>
<i>wilsii</i> Delsaerd, 1998	<i>Conus (Rhizoconus)</i>
<i>wittigi</i> Walls, 1977	<i>Conus (Phasmoconus)</i>
<i>xanthicus</i> Dall, 1910	<i>Conus (Dauciconus)</i>
<i>xanthocinctus</i> Petuch, 1986	<i>Conus (Lamniconus)</i>
<i>xicoi</i> Röckel, 1987	<i>Conus (Lautoconus)</i>
<i>ximenes</i> (Gray, 1839)	<i>Conasprella (Ximeniconus)</i>
<i>yemenensis</i> Bondarev, 1997	<i>Conus (Phasmoconus)</i>
<i>zandbergeni</i> Filmer & Moolenbeek, 2010	<i>Conus (Phasmoconus)</i>
<i>zapatensis</i> Röckel, 1987	<i>Conus (Phasmoconus)</i>
<i>zebra</i> Lamarck, 1810	<i>Conus (Phasmoconus)</i>
<i>zebroides</i> Kiener, 1848	<i>Conus (Lautoconus)</i>
<i>zeylanicus</i> Gmelin, 1791	<i>Conus (Punctulilis)</i>
<i>ziczac</i> Mühlfeld, 1816	<i>Conus (Dauciconus)</i>
<i>zinhoi</i> (Cossignani, 2014)	<i>Conus (Lautoconus)</i>
<i>zonatus</i> Hwass in Bruguière, 1792	<i>Conus (Stephaniconus)</i>
<i>zylmanae</i> Petuch, 1998	<i>Conus (Dauciconus)</i>

Appendix Table 2. Nominal genus-group names of Recent Conidae and their current status in the present classification.

Name	Status
<i>Afonsoconus</i> Tucker & Tenorio, 2013	<i>Conus (Afonsoconus)</i>
<i>Africonus</i> Petuch, 1975	synonym of <i>Conus (Lautoconus)</i>
<i>Arubaconus</i> Petuch, 2013	synonym of <i>Conus (Ductoconus)</i>
<i>Asprella</i> Schaufuss, 1869	<i>Conus (Asprella)</i>
<i>Atlanticonus</i> Petuch & Sergent, 2012	<i>Conus (Atlanticonus)</i>
<i>Attenuiconus</i> Petuch, 2013	<i>Conus (Attenuiconus)</i>
<i>Austroconus</i> Tucker & Tenorio, 2009	synonym of <i>Conus (Mamiconus)</i>
<i>Bathyconus</i> Tucker & Tenorio, 2009	synonym of <i>Conasprella (Fusiconus)</i>
<i>Bermudaconus</i> Petuch, 2013	<i>Conus (Bermudaconus)</i>
<i>Boucheticonus</i> Tucker & Tenorio, 2013	<i>Conasprella (Boucheticonus)</i>
<i>Brasiliconus</i> Petuch, 2013	<i>Conus (Brasiliconus)</i>
<i>Calamiconus</i> Tucker & Tenorio, 2009	synonym of <i>Conus (Lividiconus)</i>
<i>Calibanus</i> da Motta, 1991	<i>Conus (Calibanus)</i>
<i>Californiconus</i> Tucker & Tenorio, 2009	<i>Californiconus</i>
<i>Caribicoconus</i> Petuch, 2003	synonym of <i>Conus (Dauciconus)</i>
<i>Chelyconus</i> Mörch, 1852	<i>Conus (Chelyconus)</i>
<i>Cleobula</i> Iredale, 1930	synonym of <i>Conus (Dendroconus)</i>
<i>Coltroconus</i> Petuch, 2013	<i>Conasprella (Coltroconus)</i>
<i>Conasprella</i> Thiele, 1929	<i>Conasprella (Conasprella)</i>
<i>Conasprelloides</i> Tucker & Tenorio, 2009	synonym of <i>Conus (Dauciconus)</i>
<i>Continuconus</i> Tucker & Tenorio, 2013	synonym of <i>Conus (Klemaeconus)</i>
<i>Conus</i> Linnaeus, 1758	<i>Conus (Conus)</i>
<i>Cornutoconus</i> Suzuki, 1972	synonym of <i>Conus (Taranteconus)</i>
<i>Coronaxis</i> Swainson, 1840	synonym of <i>Conus (Conus)</i>
<i>Cucullus</i> Röding, 1798	synonym of <i>Conus (Conus)</i>
<i>Cylinder</i> Montfort, 1810	synonym of <i>Conus (Cylindrus)</i>
<i>Cylindrella</i> Swainson, 1840	synonym of <i>Conus (Asprella)</i>
<i>Cylindrus</i> Batsch, 1789	<i>Conus (Cylindrus)</i>
<i>Dalliconus</i> Tucker & Tenorio, 2009	<i>Conasprella (Dalliconus)</i>
<i>Darioconus</i> Iredale, 1930	<i>Conus (Darioconus)</i>
<i>Dauciconus</i> Cotton, 1945	<i>Conus (Dauciconus)</i>
<i>Dendroconus</i> Swainson, 1840	<i>Conus (Dendroconus)</i>
<i>Ductoconus</i> da Motta, 1991	<i>Conus (Ductoconus)</i>
<i>Duodenticonus</i> Tucker & Tenorio, 2013	synonym of <i>Conasprella (Conasprella)</i>
<i>Dyraspis</i> Iredale, 1949	synonym of <i>Conus (Virroconus)</i>
<i>Elisaconus</i> Tucker & Tenorio, 2013	<i>Conus (Elisaconus)</i>
<i>Embrikena</i> Iredale, 1937	<i>Conus (Embrikena)</i>
<i>Endemoconus</i> Iredale, 1931	<i>Conasprella (Endemoconus)</i>
<i>Eremiconus</i> Tucker & Tenorio, 2009	<i>Conus (Eremiconus)</i>
<i>Erythroconus</i> da Motta, 1991	synonym of <i>Conus (Darioconus)</i>
<i>Eugeniconus</i> da Motta, 1991	<i>Conus (Eugeniconus)</i>
<i>Floraconus</i> Iredale, 1930	<i>Conus (Floraconus)</i>
<i>Fraterconus</i> Tucker & Tenorio, 2013	<i>Conus (Fraterconus)</i>
<i>Fulgiconus</i> da Motta, 1991	synonym of <i>Conus (Phasmoconus)</i>
<i>Fumiconus</i> da Motta, 1991	synonym of <i>Conasprella (Fusiconus)</i>
<i>Fusiconus</i> da Motta, 1991	<i>Conasprella (Fusiconus)</i>
<i>Gastridium</i> Modeer, 1793	<i>Conus (Gastridium)</i>
<i>Genuanoconus</i> Tucker & Tenorio, 2009	synonym of <i>Conus (Kalloconus)</i>
<i>Gladioconus</i> Tucker & Tenorio, 2009	synonym of <i>Conus (Monteiroconus)</i>
<i>Globiconus</i> Tucker & Tenorio, 2009	synonym of <i>Conasprella (Ximeniconus)</i>
<i>Gradiconus</i> da Motta, 1991	synonym of <i>Conus (Dauciconus)</i>
<i>Graphiconus</i> da Motta, 1991	synonym of <i>Conus (Phasmoconus)</i>

Continued

CLASSIFICATION OF CONE SNAILS

Appendix Table 2. *Continued*

Name	Status
<i>Harmoniconus</i> da Motta, 1991	<i>Conus</i> (<i>Harmoniconus</i>)
<i>Hermes</i> Montfort, 1810	<i>Conus</i> (<i>Hermes</i>)
<i>Heroconus</i> da Motta, 1991	synonym of <i>Conus</i> (<i>Pionoconus</i>)
<i>Isoconus</i> Tucker & Tenorio, 2013	synonym of <i>Conus</i> (<i>Splinoconus</i>)
<i>Jaspidiconus</i> Petuch, 2003	synonym of <i>Conasprella</i> (<i>Ximeniconus</i>)
<i>Kalloconus</i> da Motta, 1991	<i>Conus</i> (<i>Kalloconus</i>)
<i>Kellyconus</i> Petuch, 2013	<i>Conus</i> (<i>Kellyconus</i>)
<i>Kenyonia</i> Brazier, 1896	<i>Conus</i> (<i>Kenyonia</i>)
<i>Kermasprella</i> Powell, 1958	synonym of <i>Conasprella</i> (<i>Endemoconus</i>)
<i>Ketyconus</i> da Motta, 1991	synonym of <i>Conus</i> (<i>Floraconus</i>)
<i>Kioconus</i> da Motta, 1991	synonym of <i>Conus</i> (<i>Splinoconus</i>)
<i>Klemaeconus</i> Tucker & Tenorio, 2013	<i>Conus</i> (<i>Klemaeconus</i>)
<i>Kohniconus</i> Tucker & Tenorio, 2009	<i>Conasprella</i> (<i>Kohniconus</i>)
<i>Kurodaconus</i> Shikama & Habe, 1968	synonym of <i>Conus</i> (<i>Turriconus</i>)
<i>Lamniconus</i> da Motta, 1991	<i>Conus</i> (<i>Lamniconus</i>)
<i>Lautoconus</i> Monterosato, 1923	<i>Conus</i> (<i>Lautoconus</i>)
<i>Leporiconus</i> Iredale, 1930	<i>Conus</i> (<i>Leporiconus</i>)
<i>Leptoconus</i> Swainson, 1840	<i>Conus</i> (<i>Leptoconus</i>)
<i>Lilliconus</i> Raybaudi Massilia, 1994	<i>Conasprella</i> (<i>Lilliconus</i>)
<i>Lindaconus</i> Petuch, 2002	<i>Conus</i> (<i>Lindaconus</i>)
<i>Lithoconus</i> Mörch, 1852	<i>Conus</i> (<i>Lithoconus</i>)
<i>Lividoconus</i> Wils, 1970	<i>Conus</i> (<i>Lividoconus</i>)
<i>Lizaconus</i> da Motta, 1991	synonym of <i>Conus</i> (<i>Profundiconus</i>)
<i>Magelliconus</i> da Motta, 1991	synonym of <i>Conus</i> (<i>Purpuriconus</i>)
<i>Mamiconus</i> Cotton & Godfrey, 1932	<i>Conus</i> (<i>Mamiconus</i>)
<i>Miliariconus</i> Tucker & Tenorio, 2009	synonym of <i>Conus</i> (<i>Virroconus</i>)
<i>Mitraconus</i> Tucker & Tenorio, 2013	synonym of <i>Conus</i> (<i>Turriconus</i>)
<i>Monteiroconus</i> da Motta, 1991	<i>Conus</i> (<i>Monteiroconus</i>)
<i>Nataliconus</i> Tucker & Tenorio, 2009	synonym of <i>Conus</i> (<i>Leptoconus</i>)
<i>Nimboconus</i> Tucker & Tenorio, 2013	synonym of <i>Conus</i> (<i>Phasmoconus</i>)
<i>Nitidoconus</i> Tucker & Tenorio, 2013	synonym of <i>Conus</i> (<i>Splinoconus</i>)
<i>Ongoconus</i> da Motta, 1991	synonym of <i>Conus</i> (<i>Kioconus</i>)
<i>Papyriconus</i> Tucker & Tenorio, 2013	<i>Conus</i> (<i>Papyriconus</i>)
<i>Parviconus</i> Cotton & Godfrey, 1932	<i>Conasprella</i> (<i>Parviconus</i>)
<i>Perplexiconus</i> Tucker & Tenorio, 2009	synonym of <i>Conasprella</i> (<i>Ximeniconus</i>)
<i>Phasmoconus</i> Mörch, 1852	<i>Conus</i> (<i>Phasmoconus</i>)
<i>Pionoconus</i> Mörch, 1852	<i>Conus</i> (<i>Pionoconus</i>)
<i>Plicaustraconus</i> Moolenbeek, 2008	<i>Conus</i> (<i>Plicaustraconus</i>)
<i>Poremskiconus</i> Petuch, 2013	synonym of <i>Conus</i> (<i>Dauciconus</i>)
<i>Profundiconus</i> Kuroda, 1956	<i>Profundiconus</i>
<i>Protoconus</i> da Motta, 1991	synonym of <i>Conus</i> (<i>Tenorioconus</i>)
<i>Protostrioconus</i> Tucker & Tenorio, 2009	synonym of <i>Conus</i> (<i>Gastridium</i>)
<i>Pseudoconorbis</i> Tucker & Tenorio, 2009	<i>Conasprella</i> (<i>Pseudoconorbis</i>)
<i>Pseudohermes</i> Tucker & Tenorio, 2013	synonym of <i>Conus</i> (<i>Virgiconus</i>)
<i>Pseudolilliconus</i> Tucker & Tenorio, 2009	<i>Conus</i> (<i>Pseudolilliconus</i>)
<i>Pseudonoduloconus</i> Tucker & Tenorio, 2009	<i>Conus</i> (<i>Pseudonoduloconus</i>)
<i>Pseudopterygia</i> Tucker & Tenorio, 2013	<i>Conus</i> (<i>Pseudopterygia</i>)
<i>Puncticulis</i> Swainson, 1840	<i>Conus</i> (<i>Puncticulis</i>)
<i>Purpuriconus</i> da Motta, 1991	synonym of <i>Conus</i> (<i>Dauciconus</i>)
<i>Pyruconus</i> Olsson, 1967	<i>Conus</i> (<i>Pyruconus</i>)

Continued

Appendix Table 2. *Continued*

Name	Status
<i>Quasiconus</i> Tucker & Tenorio, 2009	<i>Conus</i> (<i>Quasiconus</i>)
<i>Regiconus</i> Iredale, 1930	synonym of <i>Conus</i> (<i>Darioconus</i>)
<i>Rhizoconus</i> Mörch, 1852	<i>Conus</i> (<i>Rhizoconus</i>)
<i>Rhombiconus</i> Tucker & Tenorio, 2009	synonym of <i>Conus</i> (<i>Stephanoconus</i>)
<i>Rhombus</i> Montfort, 1810	synonym of <i>Conus</i> (<i>Rhombiconus</i>)
<i>Rolaniconus</i> Tucker & Tenorio, 2009	synonym of <i>Conus</i> (<i>Strategoconus</i>)
<i>Rollus</i> Montfort, 1810	synonym of <i>Conus</i> (<i>Gastridium</i>)
<i>Rubroconus</i> Tucker & Tenorio, 2013	<i>Conus</i> (<i>Rubroconus</i>)
<i>Sandericonus</i> Petuch, 2013	<i>Conus</i> (<i>Sandericonus</i>)
<i>Sciteconus</i> da Motta, 1991	<i>Conus</i> (<i>Sciteconus</i>)
<i>Seminoleconus</i> Petuch, 2003	synonym of <i>Conus</i> (<i>Protoconus</i>)
<i>Socioconus</i> da Motta, 1991	synonym of <i>Conus</i> (<i>Pionoconus</i>)
<i>Splinoconus</i> da Motta, 1991	<i>Conus</i> (<i>Splinoconus</i>)
<i>Spuriconus</i> Petuch, 2003	synonym of <i>Conus</i> (<i>Lindaconus</i>)
<i>Stellaconus</i> Tucker & Tenorio, 2009	synonym of <i>Conus</i> (<i>Splinoconus</i>)
<i>Stephanoconus</i> Mörch, 1852	<i>Conus</i> (<i>Stephanoconus</i>)
<i>Strategoconus</i> da Motta, 1991	<i>Conus</i> (<i>Strategoconus</i>)
<i>Strioconus</i> Thiele, 1929	synonym of <i>Conus</i> (<i>Pionoconus</i>)
<i>Sulciconus</i> Bielz, 1869	synonym of <i>Conus</i> (<i>Asprella</i>)
<i>Taranteconus</i> Azuma, 1972	synonym of <i>Conus</i> (<i>Stephanoconus</i>)
<i>Tenorioconus</i> Petuch & Drohlshagen, 2011	synonym of <i>Conus</i> (<i>Stephanoconus</i>)
<i>Tesselliconus</i> da Motta, 1991	<i>Conus</i> (<i>Tesselliconus</i>)
<i>Textilia</i> Swainson, 1840	<i>Conus</i> (<i>Textilia</i>)
<i>Thalassiconus</i> Tucker & Tenorio, 2013	synonym of <i>Conus</i> (<i>Calibanus</i>)
<i>Theliconus</i> Swainson, 1840	synonym of <i>Conus</i> (<i>Hermes</i>)
<i>Thoraconus</i> da Motta, 1991	synonym of <i>Conus</i> (<i>Fulgiconus</i>)
<i>Trovaconus</i> Tucker & Tenorio, 2009	synonym of <i>Conus</i> (<i>Kalloconus</i>)
<i>Tuckericonus</i> Petuch, 2013	synonym of <i>Conus</i> (<i>Dauciconus</i>)
<i>Tuliparia</i> Swainson, 1840	synonym of <i>Conus</i> (<i>Gastridium</i>)
<i>Turriconus</i> Shikama & Habe, 1968	<i>Conus</i> (<i>Turriconus</i>)
<i>Utriculus</i> Schumacher, 1817	synonym of <i>Conus</i> (<i>Gastridium</i>)
<i>Varioconus</i> da Motta, 1991	synonym of <i>Conus</i> (<i>Lautoconus</i>)
<i>Viminiconus</i> Tucker & Tenorio, 2009	synonym of <i>Conasprella</i> (<i>Fusiconus</i>)
<i>Virgiconus</i> Cotton, 1945	<i>Conus</i> (<i>Virgiconus</i>)
<i>Virroconus</i> Iredale, 1930	<i>Conus</i> (<i>Virroconus</i>)
<i>Vituliconus</i> da Motta, 1991	synonym of <i>Conus</i> (<i>Strategoconus</i>)
<i>Ximeniconus</i> Emerson & Old, 1962	<i>Conasprella</i> (<i>Ximeniconus</i>)
<i>Yeddoconus</i> Tucker & Tenorio, 2009	synonym of <i>Conasprella</i> (<i>Endemoconus</i>)